



Maldon Strategic Assessment 2017



Demographic Profile

APPENDIX 1

Maldon District forms part of Essex Police North Local Police Area (LPA) which also includes the areas of Chelmsford, Braintree. Along with Maldon, Chelmsford is a shared District Policing Area (DPA) and benefit from a shared manager for both Community Safety Partnerships.

The District of Maldon has a coastal border stretching from the Burnham-on-Crouch estuary, round the Dengie peninsula up to the nuclear facility at Bradwell on the River Blackwater. The District is home to the towns of Maldon and Burnham-on-crouch along with a number of smaller villages. Situated on the east coast of the county with several marinas including the main one of Blackwater, the area is popular with the sailing community.

Maldon District is home to 62,700 people (Essex Local Authority Portraits March 2016), which is expected to increase to 66,100 by 2025.

Maldon District has the highest proportion (98%) of resident population classified as 'white' of all the District Councils in Essex, making Maldon less ethnically diverse than the Essex average of 6% classified as non-white ethnic group. The 2% of the Maldon population who are 'non-white' are largely of mixed or Asian ethnicity with a very small percentage black or other ethnic grouping.

2017 Strategic Priorities

From analysing overall recorded crime, public health data and evaluating public consultations, priorities for the Maldon District Community Safety Partnership are recommended below.

1. Tackling crime, the fear of crime and anti-social behaviour
2. Protecting and supporting vulnerable people and victims of crime
3. Reduction in harm caused by alcohol and substance misuse
4. Promoting road safety and challenging irresponsible driving
5. Tackling rural crime and strengthening communities

All CSPs have a statutory duty to reduce reoffending.

Analysis of Crime Types/Anti-Social Behaviour

APPENDIX 1

The partnership receives quarterly Performance Summary from Essex Police which aids in assessing the District's current crime trends and where resources should be focused. The table below provides figures from 31st-October-1st November 2015/2016

Crime Type	31st Oct 14' Nov 15'	31st Oct 15' Nov 16'	Difference (No. of offences)	Difference %
Violence with injury	272	288	16	5.9
Violence without Injury	350	468	118	33.7
Burglary Dwelling	100	149	49	49
Burglary Other	258	235	-23	-8.9
Theft from Motor Vehicles	184	155	-29	-15.8
Theft of Motor Vehicle	65	74	9	13.8
Vehicle Interference	34	29	-5	14.7
Theft from Person	34	34	0	0
Theft of Pedal Cycle	20	17	-3	-15
Other theft	301	319	18	6
Shoplifting	76	57	-19	-25
Public Order Offences	99	151	52	52.5
Criminal Damage	303	350	47	15.5
Racially/Religiously Aggravated Offences	8	9	1	12.5
Anti-social Behaviour	1104	1042	-62	5.6
All Crime	2295	2513	218	9.5

Offences

- Maldon has an all crime offence increase of 218 offences (9.5%) when compared with 2015
- Maldon has had a 5.6% reduction in ASB (62 incidents) compared with the previous year

Solved rates

- With an all crime solved rate of 15, Maldon is 1.7% points worse than 2015 (16.7%)

The table above shows the number of incidents for each crime type comparing the same period of 31st October-1st November 2015 and 2016. Crime in the Maldon District has consistently decreased for a number of years, making it more challenging each year to continue. Despite the increase figures Maldon remains one of the lowest crime rate areas in Essex.

Thefts from motor vehicles and vehicle interference have both seen a significant decrease in offences when comparing to the previous year. Awareness and educating people on the importance of securing vehicles and promoting parking in well lit areas is an on going message delivered by the Partnership.

Maldon has seen an increase of burglary dwelling. Essex Police have developed a method to respond to burglary called Operation INSIGHT. This is based on the theory of “predictive policing” which, as the name suggests, is about using a particular form of crime pattern analysis indicating where crimes are most likely to happen. Resources are directed to conduct intensive patrols within these zones, supported by the process known as “cocooning”. Cocooning involves officers visiting nearby dwellings of a burglary, the number of dwellings to be visited will be site specific, but would normally include 10 houses either side, 10 in front and 5 behind. Attending officers will conduct an initial assessment of security and vulnerability which may inform referrals to other scheme such as crime prevention officers or local handy man schemes. These households will receive bespoke crime prevention advice and reassurance. Zones were cocooning is taking place are shared with the CSP.

Anti-social behaviour reports have decreased for another year in the District. The Partnership continues to address reports and incidents through the Maldon and Burnham Action Group, which centres on neighbour disputes and individuals, and the ASB Youth Forum which looks to support young people who are highlighted as challenging. Agencies such Essex Police, local Primary and Secondary Schools and Housing Associations attend these forums and work in partnership to tackle ASB. Additionally the partnership will continue to tackle reports of youth nuisance by delivering diversionary activities for young people, liaison with parents and high presence in hot spot area from the Council’s Community Protection Officers.

In order for Essex Police to provide immediate communication with the public, Essex Community Messaging was launched in October 2014. The free service allows the community to sign up to receive accurate and up-to-date information, crime prevention advice and notifications from Essex Police officers, Essex Watch liaison officers and other key partners, such as Neighbourhood Watch.

Essex Fire and Rescue Service Data

APPENDIX 1

Figures below show incidents which took place across the district for the period from 1st November 2015- 31st October 2016. The total number of incidents which stations in the Maldon District responded to stood at 323 (327 in 1st December 2014- 31st November 2015). The table below shows the breakdown of stations in Burnham (68 incidents), Maldon (188 incidents), Tillingham (37 incidents) and Tollesbury (30 incidents).

Incident Type (Including false alarms, fire and special service)	Number of Incidents
Burnham	
Alarms – including AFA, gas and smoke alarms	20
Fire – including abandoned call, building, caravan, chimney, fire in the open, road furniture, vehicle	33
Hazardous material – including gas, unidentified smell, vehicle leaking fuel	4
Humanitarian or Assistance – including dangerous structure, flooding, persons collapsed, persons locked out, RTC	2
Rescues – including people stuck in lifts, rescue from a height, RTC persons trapped, animal rescue, persons locked in, rescue from water	9
Total	68

Maldon	
Alarms – including AFA, gas and smoke alarms	83
Fire – including abandoned call, building, caravan, chimney, fire in the open, road furniture, vehicle	74
Hazardous material – including gas, unidentified smell, vehicle leaking fuel	6
Humanitarian or Assistance – including dangerous structure, flooding, persons collapsed, persons locked out, RTC	6
Rescues – including people stuck in lifts, rescue from a height, RTC persons trapped, animal rescue, persons locked in, rescue from water	19
Total	188

Tillingham	
Alarms – including AFA, gas and smoke alarms	4
Fire – including abandoned call, building, caravan, chimney, fire in the open, road furniture, vehicle	23

APPENDIX 1

Hazardous material – including gas, unidentified smell, vehicle leaking fuel	3
Humanitarian or Assistance – including dangerous structure, flooding, persons collapsed, persons locked out, RTC	1
Rescues – including people stuck in lifts, rescue from a height, RTC persons trapped, animal rescue, persons locked in, rescue from water	6
Total	37

Tollesbury	
Alarms – including AFA, gas and smoke alarms	6
Fire – including abandoned call, building, caravan, chimney, fire in the open, road furniture, vehicle	18
Hazardous material – including gas, unidentified smell, vehicle leaking fuel	1
Humanitarian or Assistance – including dangerous structure, flooding, persons collapsed, persons locked out, RTC	2
Rescues – including people stuck in lifts, rescue from a height, RTC persons trapped, animal rescue, persons locked in, rescue from water	3
Total	30

Road Safety Data

	Chelmsford				Maldon				Essex			
2015	Fatal	Serious	KSI	Slight	Fatal	Serious	KSI	Slight	Fatal	Serious	KSI	Slight
Collisions	6	67	73	287	1	21	22	79	43	671	714	3,032
Casualties	6	70	76	387	1	26	27	103	44	734	778	4,149
2016	Fatal	Serious	KSI	Slight	Fatal	Serious	KSI	Slight	Fatal	Serious	KSI	Slight
Collisions	7	73	80	252	2	46	48	72	55	837	892	2,715
Casualties	8	79	87	326	2	55	57	100	60	937	997	3,827
% change	Fatal	Serious	KSI	Slight	Fatal	Serious	KSI	Slight	Fatal	Serious	KSI	Slight
Collisions	17%	9%	10%	-12%	100%	119%	118%	-9%	28%	25%	25%	-10%
Casualties	33%	13%	14%	-16%	100%	112%	111%	-3%	36%	28%	28%	-8%

The above graph shows collisions and casualties for Maldon, compared with Chelmsford and Essex wide. "Collisions" measures number of crashes, "Casualties" measures the number of people injured in those crashes. In November 2015 a new recording system was adopted which gives a more consistent and accurate severity, based on the injuries sustained by each casualty. The previous system tended to underestimate the severity of some injuries. This means that under the new system there has been an increase in the number of recorded serious injuries. This system does not affect the recording of fatalities.

Maldon Health Profile March 2016

- Maldon has a high proportion of over 65s and a 27% increase is expected between 2015 and 2025 equating to 4,000 more people which will put a greater demand on social care services and housing needs.
- The health of people in Maldon is generally better than the England average. Deprivation is lower than average for older people, however about 13.2% of children live in poverty.
- Life expectancy above the national average for both males (Maldon 79.9- England 78.9) and females (Maldon- 83.4- England 82.8)
- 69.2% of adults and 30.2% of 10-11 year old children are overweight or obese. This is higher than the national figure for adults but below for children.

- 368 people (564 per 100,000) were admitted to hospital with alcohol related conditions, significantly better than the national average.
- There has been a 12% rise since 2013/14 in the number of adults being treated for drug and alcohol abuse.
- Maldon has a 'lower than average' rate of achieving five or more GCSEs at A*-C
- Maldon had a high rate of under 18s teenage conceptions in 2013 at 27.1 per 1,000, when compared to England and Essex.
- The rate of people killed and seriously injured on roads is slightly higher than the national average (42.9 per 100,000)
- Rates of statutory homelessness, violent crime, long term unemployment, drug misuse and early deaths from cardiovascular diseases are better than average

Maldon Health and Wellbeing Local priorities 2016/17

1. **Obesity (child and adult)** Many health risks are associated with our weight, including mental health, type 2 diabetes, CVD, some cancers, hypertension, osteoarthritis, breathing problems etc.
2. **Older Adult's Health-** Including frailty, falls prevention, social isolation

Citizens Insight Source: Residents Survey 2015

94% of adults in Maldon say they feel safe during the day, the highest district figure and well above the Essex average of 85%

68% say they feel safe after dark, also considerably higher than the county average of 49%

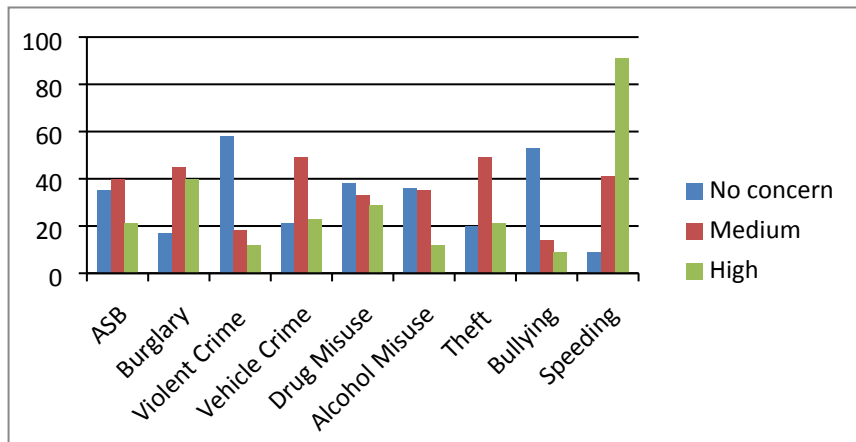
42% of adults are satisfied with safety on the roads, the same as the county average

Community Engagement and Perceptions of Crime

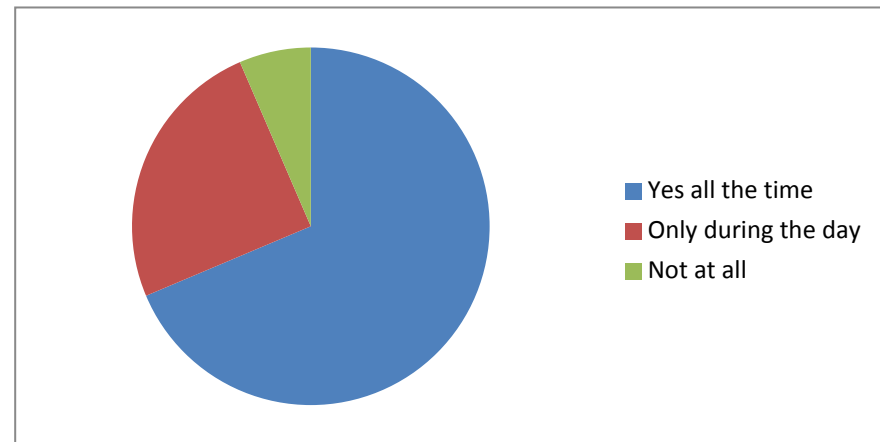
Maldon CSP attends community events every year in order to interact with the public, raise awareness of the role of the partnership, the agencies involved and to identify community issues and their needs. Additionally the CSP displays contact information such as the community safety email address and website aiming to ensure stronger communication between the partnership and the residents of the Maldon District.

By providing members of the community a residents questionnaires which aim to identify which crimes are cause of concern in their area, if they feel safe after dark, if they feel the district as a whole is a safe place to live the CSP can establish what our main focuses should be. Resident's surveys have been carried out from April 2016- March 2017 with 186 responses

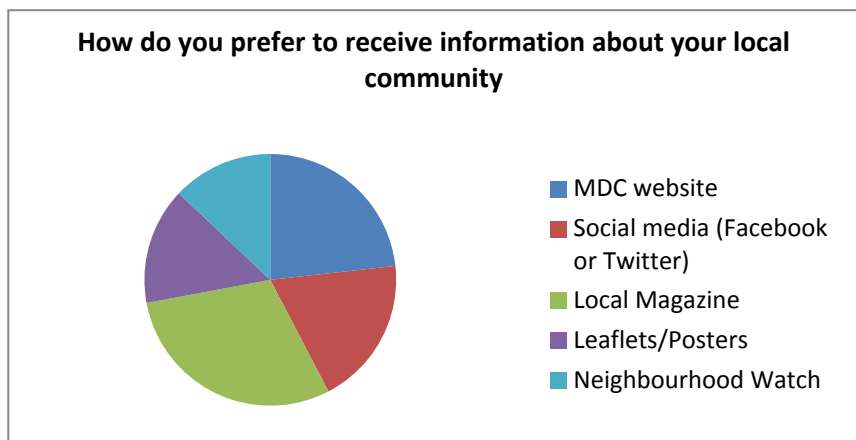
What are your main concerns?



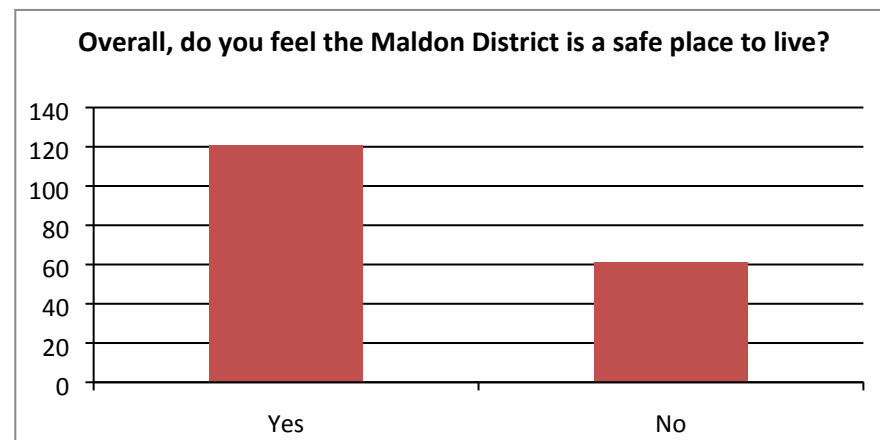
Do you feel safe where you live?



How do you prefer to receive information about your local community



Overall, do you feel the Maldon District is a safe place to live?



Citizens Insight Source: Residents Survey 2015

94% of adults in Maldon say they feel safe during the day, the highest district figure and well above the Essex average of 85%

68% say they feel safe after dark, also considerably higher than the county average of 49%

42% of adults are satisfied with safety on the roads, the same as the county average

Reflecting on previous Strategic Priorities 2015/16

1. Tackling crime, the fear of crime and anti-social behaviour- reports of anti-social behaviour have decreased for another year.
2. Protecting and supporting vulnerable people and victims of crime- The PCC has commissioned the work of Gangs Lines to tackle CSE and urban street gangs.
3. Reduction in harm caused by alcohol and substance misuse- Drug offences have decreased 13.1% in the district when comparing 31st October 2015-1st November 2016 to the previous year.
4. Promoting road safety and challenging irresponsible driving- The partnership has liaised with local businesses to address issues of street racing meets in local car parks which have prompted anti-social driving around the District. Essex Police have concentrated enforcement and speed checks specifically in Maldon in the last 18 months. Additionally the Partnership were successful in a bid to the PCC to fund a TRU Camera and training for the Councils Community Protection Team to carry out speed checks.

Partnership Activities

The Maldon District Community Safety Partnership has carried out a wide range of activities and initiatives to reduce crime, disorder and anti-social behaviour over the last 12 months. A selection of multi-agency initiatives features below:-

- **Crucial Crew-** provides practice learning life skills for year 6 pupils in Maldon as they prepare for the transition to secondary school. Workshops include online safety, fire safety, road and cycle safety, stranger danger, anti-bullying, waste and recycling and first aid.
- **Keep Safe project-** Maldon have been running the Keep Safe project since March 2013 which aims to support vulnerable adults in the community. Shops throughout the district are able to display a Keep Safe sticker in their windows to indicate to vulnerable adults that it is a place of safety should they find themselves in a dangerous or distressing situation.
- **Public engagement-** The Partnership has invested in a tailored marquee which can be used to attract the community as well as displaying the community safety email address, effectively enabling members of the public to be aware of how to communicate any issues relating to community safety. Information can be displayed about the partnership and its involved agencies, such as Essex Police, Essex fire and rescue and Neighbourhood watch. Questionnaires are distributed to the public around local issues allowing them to have a voice and for the CSP to identify specific issues and hotspot areas.
- **Door Step Sports Club-** In March 2014 partners including, Maldon District Council, MOAT housing, Essex Boys and Girls Clubs and the CSP joint together to implement a new concept of sports clubs in Southminster. Due to a high concentration of young people and increasing levels of deprivation, this area was identified as suitable locations to pilot this project. Funding was acquired through the PCCs New Initiatives Fund, Sportivate, Active Maldon, Maldon CSP, Maldon District Council and Moat Housing. In January 2016 Essex County Council agreed to fund this project for 3 years due to its success.
- **Burnham Street Art Project-** Following on for the success of the Mill Lane Underpass Street Art project in August 2015- the partnership were granted funding from the Police and Crime Commissioner to complete a mural on a disused wall at Riverside Park in Burnham on Crouch. Young people were given the opportunity to participate in designing and painting the wall which gave them a sense of ownership of the area.
- **Neighbourhood Watch Pop-up shops-** The Maldon District has a very active Neighbourhood Watch, who engage with many residents- relaying crime prevention advice, liaising between the Police, Council and the community. The group receive yearly funding to promote the concept of neighbourhood watch and benefit its residents. As a result of this the Watch decided to purchase crime prevention merchandise such as window alarms, power socket timers and door handle alarms which are available to the public at a discounted rate.
- **Winter Warmth Project-** The CSP worked in partnership with agencies such as Maldon District Council, Citizens Advice Bureau , MOAT housing, Provide, Community agents to provide information sessions around the district for homeless and the most vulnerable. Blood pressure tests, bags with winter essential, crime prevention advice, literature and merchandise were made available.
- **TRU-Cam-** the Maldon District in recent years has been plagued with reports and issues around excessive speeding and irresponsible driving. In order to combat this, the Essex Safer Roads Partnerships concentrated resources and enforcement detecting 2164 speeding offences since 1st August 2015. The Partnership were successful in a bid to the PCC Community Safety Development fund to purchase of a TruCAM hand held speed gun which can be used by Community Protection Officers and Maldon District Council to assist with Essex Police enforcement around speeding.
- **Domestic Homicide Reviews-** Unfortunately there has been two domestic homicides in the Maldon since July 2015. The CSP has a statutory duty to conduct reviews of homicides of this nature to establish lessons which could be learnt to prevent this happening in the future.
- **Essex Police Costal Policing Team-** Police have now recognised the importance of a Coastal Policing Team and have moved the section from Special Branch back into the same team as the horses, motorcycles, helicopter etc. and will be expanding from the two officers currently on the Marine Section to four officers and an additional six 'Specials'.

PESTELO or PESTELOM

- MDC is looking to build 3,000 homes within the district over the next 15 years to meet the needs of Maldon's projected growing population additionally to meet the affordable housing in Essex.
- 2016 has seen the election of a new Police and Crime Commissioner, Roger Hirst, a conservative representative who main aims for policing include—more local, visible and accessible policing, crack down on anti-social behaviour, breaking the cycle of domestic abuse, reverse the trend in serious violence, tackle gangs and organised crime, protecting children and vulnerable people and improve safety on our roads.

CSP Contact Information

Maldon

Author- Ali Burlington, Community Safety Officer

CSP Website: www.maldondistrictcsp.co.uk

Email: communitysafety@maldon.gov.uk

Contact: 01621 875794