

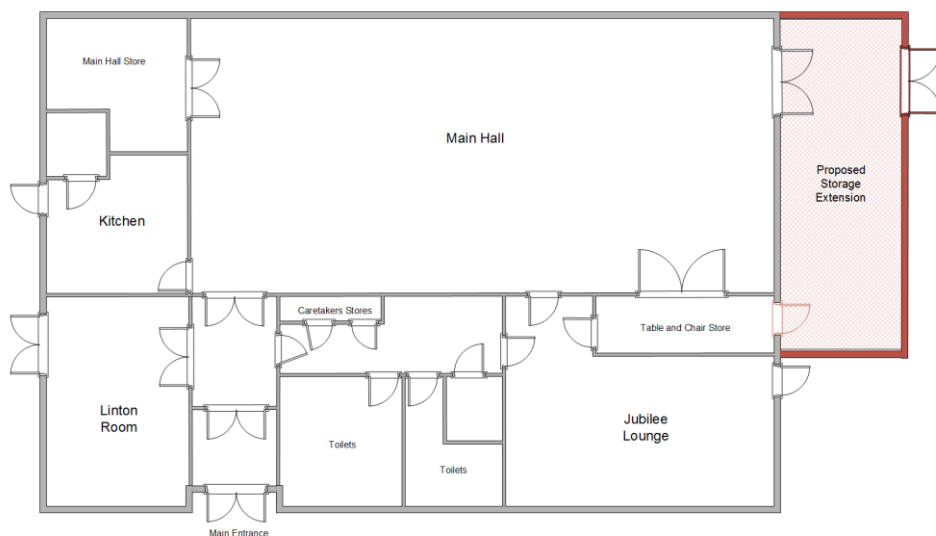
Proposal for storage extension at West Maldon Community Centre

Storage space for our hirers is becoming a significant problem at WMCC, in particular the more modern Table Tennis tables take up more room and are proving to be a hazard for both the users of the tables and other hirers who have to access the store cupboard off the main hall.

We would like to investigate the possibility of installing a single or 1.5 story extension to the East of the hall, in the position shown with the red rectangle in the aerial photograph.



Access to the new store would be via the existing fire-doors in the NE corner of the hall. A fire escape route would be maintained through to a matching set of fire-doors to the outside of the new store. A possible additional door between the Table Store and new Store could be considered.



(plan not drawn accurately to scale)

Viewed from the outside, the store would be approximately the size of the coloured area. Height to be discussed.

