

Unrestricted Document Pack

APOLOGIES Committee Services
Tel. 01621 875791 / 876232

Council Chamber 01621 859677

CHIEF EXECUTIVE'S OFFICE
CHIEF EXECUTIVE
Fiona Marshall

04 October 2016

Dear Councillor

You are summoned to attend the meeting of the;

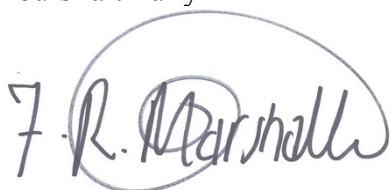
**OVERVIEW AND SCRUTINY COMMITTEE (MEETING AS THE CRIME AND
DISORDER COMMITTEE)**

on **WEDNESDAY 12 OCTOBER 2016 at 7.30 pm.**

in the Council Chamber. Maldon District Council Offices, Princes Road, Maldon.

A copy of the agenda is attached.

Yours faithfully

A handwritten signature in blue ink, appearing to read 'Fiona Marshall', enclosed within a large, hand-drawn oval.

Chief Executive

COMMITTEE MEMBERSHIP

CHAIRMAN

Councillor M S Heard

VICE-CHAIRMAN

Councillor E L Bamford

COUNCILLORS

H M Bass
Mrs P A Channer, CC
R P F Dewick
M W Helm
N R Pudney
S J Savage

THIS PAGE IS INTENTIONALLY BLANK



AGENDA

OVERVIEW AND SCRUTINY COMMITTEE (MEETING AS THE CRIME AND DISORDER COMMITTEE)

WEDNESDAY 12 OCTOBER 2016

1. Chairman's notices (please see overleaf)

2. Apologies for Absence

3. **Minutes of the last meeting** (Pages 5 - 8)

To confirm the Minutes of the meeting of the Committee held on 9 March 2016 (copy enclosed).

4. **Public Participation**

To receive the views of members of the public on items of business to be considered by the Committee (please see below):

1. A period of ten minutes will be set aside.
2. An individual may speak for no more than two minutes on a specific agenda item, the time slots to be allocated on a "first come first served" basis.
3. Participation may take the form of a statement, or alternatively a question to be addressed to the Chairman. There will be no discussion on questions put unless it is formally moved. In line with the current scheme applied to other Committees, the questions must:
 - not be defamatory, frivolous, vexatious or offensive;
 - not be the same or substantially the same as another question to the same meeting or anything so put in the last six months;
 - not involve the disclosure of confidential or exempt information.
4. Anyone wishing to speak must notify the Committee Clerk between 7.00pm and 7.20pm prior to the start of the meeting.

5. **Disclosure of Interest**

To disclose the existence and nature of any Disclosable Pecuniary Interests, other Pecuniary Interests or Non-Pecuniary Interests relating to items of business on the agenda having regard to paragraphs 6-8 inclusive of the Code of Conduct for Members.

(Members are reminded that they are also required to disclose any such interests as soon as they become aware should the need arise throughout the meeting).

6. **Consultation on the Police and Crime Plan 2016 - 2020** (Pages 9 - 34)

To receive a presentation from the Community Safety Partnership Manager and consider the report of the Director of Customers and Community (copy enclosed).

7. **Maldon District Community Safety Partnership Update** (Pages 35 - 78)

To receive a presentation from the Community Safety Manager and consider the report of the Director of Customers and Community (copy enclosed).

8. Any other items of business that the Chairman of the Committee decides are urgent

NOTICES

Sound Recording of Meeting

Please note that the Council will be recording any part of this meeting held in open session for subsequent publication on the Council's website. At the start of the meeting an announcement will be made about the sound recording. Members of the public attending the meeting with a view to speaking are deemed to be giving permission to be included in the recording.

Fire

In event of a fire, a siren will sound. Please use the fire exits marked with the green running man. The fire assembly point is outside the main entrance to the Council Offices. Please gather there and await further instruction.

Health and Safety

Please be advised of the different levels of flooring within the Council Chamber. There are steps behind the main horseshoe as well as to the side of the room.

Closed-Circuit Television (CCTV)

Meetings held in the Council Chamber are monitored and recorded by CCTV.



**MINUTES of
OVERVIEW AND SCRUTINY COMMITTEE meeting as the
CRIME AND DISORDER COMMITTEE
9 MARCH 2016**

PRESENT

Chairman	Councillor A S Fluker
Vice-Chairman	Councillor S J Savage
Councillors	E L Bamford, H M Bass, Mrs P A Channer, CC, R P F Dewick, M S Heard and M W Helm

1014. CHAIRMAN'S NOTICES

The Chairman drew attention to the list of notices published on the back of the agenda.

The Chairman welcomed Spencer Clarke, Community Safety Partnership Manager, and Inspector Andy Sawyer of Essex Police to the meeting.

1015. APOLOGIES FOR ABSENCE

There were none.

1016. MINUTES OF THE LAST MEETING

RESOLVED

- (i) that the Minutes of the meeting of the Committee held on 18 November 2015 be received.

Minute 607 – Essex Police Review

Councillor S J Savage commented that bullet point six on page 3 of the Minutes should refer to “...*a large number of mental health issues*...”.

RESOLVED

- (ii) that, subject to the above amendment, the Minutes of the meeting of the Committee held on 18 November 2015 be confirmed.

1017. PUBLIC PARTICIPATION

None received.

1018. DISCLOSURE OF INTEREST

Councillor S J Savage declared a non-pecuniary interest as he was a substitute Member on the Police and Crime Panel.

Councillor M S Heard declared in the interests of openness and transparency that he was employed by Essex Police in a civilian role.

Councillor Mrs P A Channer, CC declared a non-pecuniary interest as she was the Council's representative on the Police and Crime Panel, and also as she was an Essex County Council (ECC) Member.

1019. MALDON DISTRICT COMMUNITY SAFETY PARTNERSHIP UPDATE

The Committee considered the report of the Director of Customers and Community asking Members to note the progress of activities undertaken by the Maldon Community Safety Partnership and to also note the proposed priorities for 2016 / 17 and received a presentation from the Community Safety Partnership Manager.

Appendix 1 to the report outlined the statutory duties aligned to the Community Safety Partnership. Following completion of the strategic assessment of crime, health and data perceptions from the last year, officers recommended that the priorities outlined in the report be adopted. Action plans for each of the priorities were attached as Appendices 2, 3, 4, 5 and 6 to the report.

Attached as Appendix 7 to the report was a copy of the most recent Essex Police strategic management performance data.

The presentation and report provided an update on a number of areas, in particular the following:

- Statutory Duties: The Officer outlined a number of areas relating to the statutory functions of the Maldon Community Safety Partnership (CSP) as outlined in Appendix 1 to the report.
- Police and Crime Commissioner (PCC) Update: Members noted that the current PCC, Mr Nick Alston, indicated that he would not be standing for re-election. The process for appointing a new commissioner was commencing soon with the election taking place on 5 May 2016.
- Victim-Offender-Location: These sub groups continued to meet on a regular basis and working streams for each group were effectively impacting on various areas of community safety.
- Anti-Social Behaviour, Crime and Policing Act 2014: Members were reminded of the new Essex Police response to anti-social behaviour and how this involved each case being assessed on the new THRIVE call assessment model. This ensured that each report is risk assessed for threat, risk and harm before allocation for a response or to a partner agency (i.e. a noise complaint would be referred to Maldon District Council).

A number of questions were raised and the following information provided in response:

- Reducing Crime, the Fear of Crime and Anti-Social Behaviour: Councillor M S Heard asked for clarification on how the figures relating to the reduction in the fear of crime were measured. The Community Safety Partnership Manager confirmed that information is collected in the form of surveys at community events, via the website and county tracker surveys. Topics are looked at in detail and assessed.
- Community Speed Watch: Concern was raised that there were still many volunteers across the District willing to be trained however the resource for training was not forthcoming. The Community Safety Partnership Manager responded that this was a priority for the team and would be moved forward.
- Community Safety Events: Councillor Mrs P A Channer, CC asked for clarification on how the success of an event is measured. The Community Safety Partnership Manager clarified that each project is evaluated to suit the nature of the event, whether it be by surveys, social media or direct communication with school pupils and teachers.
- Public Space Protection Orders (PSPO's): The Community Safety Partnership Manager confirmed that this would be considered for other areas, not just town centre locations.

The Committee then received a verbal update from Inspector Andy Sawyer of Essex Police in respect of Appendix 7 to the report, the Essex Police strategic management performance data.

Following the presentation Members raised a number of questions and in response, the following information was provided by Inspector Sawyer:

- Communication: The Director of Customers and Community confirmed that Inspector Sawyer would be invited to forthcoming meetings of the Parish Clerks Forum. Inspector Sawyer added that methods of communication were being reviewed, with social media playing an important role, as well as the Essex Community Messaging Service.
- Rural Crime: Inspector Sawyer reported that Essex Police were well aware of the issues and they were an on-going concern for the force.
- Child Abuse Claims: This was an on-going piece of work with the Police working with partners and prosecutors to see what errors had been made in the past and what improvements could be made going forward.
- Domestic Violence: Inspector Sawyer confirmed that when a case of potential domestic violence is reported by a neighbour then officers do always go to the property to investigate.

The Chairman proposed that an additional recommendation be added in respect of the issues the Parishes considered a priority following the meeting of the Parish Clerks Forum, and that these be reported back to the next meeting of this Committee. This was agreed.

The Chairman thanked Inspector Sawyer for attending the meeting.

RESOLVED

- (i) that Members note the progress on the delivery plan for 2016 / 17 and the success of the initiatives undertaken by the Partnership;
- (ii) that the Committee is provided with quarterly figures for the previous periods January-June and July-December for comparison and to give a clear indication of the Police Authority's performance;
- (iii) that Officers report back to this Committee with the priorities decided by the Parish Council's following the meeting of the Parish Clerks Forum.

1020. ANY OTHER ITEMS OF SCRUTINY THAT MEMBERS WISH TO BRING FORWARD

Councillor S J Savage proposed that a piece of scrutiny work be put to a future meeting of the Committee in respect of the Local Development Plan (LDP). The Chairman responded that as the LDP was still an on-going process and not finalised then it would not be appropriate to consider it at this time. Councillor Savage therefore withdrew his proposition.

There being no further items of business the Chairman closed the meeting at 9.26 pm

A S FLUKER
CHAIRMAN



REPORT of DIRECTOR OF CUSTOMERS AND COMMUNITY

to

OVERVIEW AND SCRUTINY COMMITTEE (MEETING AS THE CRIME AND DISORDER COMMITTEE)

12 OCTOBER 2016

CONSULTATION ON THE POLICE AND CRIME PLAN 2016 - 2020

1. PURPOSE OF THE REPORT

- 1.1 To make Members aware of the consultation exercise for the police and crime plan by the office of the police and crime commissioner (OPCC) and give Members an opportunity to make comment.

2. RECOMMENDATION

That Members note this report and consider the implications of the proposed new Police and Crime Plan for 2016 – 2020, and consider and approve the draft consultation response as set out in paragraph 3.2 of this report.

3. SUMMARY OF KEY ISSUES

3.1 Background

- 3.1.1 The new Essex Police and Crime Commissioner, Roger Hirst, was elected as commissioner in May 2016 for a four-year term. A draft plan has now been circulated for public comment based on the manifesto of the commissioner and taking into account policing priorities and the local priorities of community safety partnerships. The initial launch of this draft plan was held on 24 August 2016 and was attended by Councillor Miriam Lewis and Spencer Clarke, Community Safety Manager. The plan was also discussed at Community Services Committee on 11 October 2016 where Members considered it appropriate to consider responses to the proposed plan. The OPCC is currently holding more focused workshops on each priority theme which are being attended by members and officers. The public survey for this engagement commenced in early September 2016 and the cut-off date for responses is 7 October 2016. The new plan will then be presented to the Police and Crime Panel, which is attended by Councillor Mrs P A Channer, for approval in late October 2016 with a view to publishing the document in late November 2016.
- 3.1.2 The community safety partnership agrees its strategic priorities on an annual basis following the completion of an annual strategic assessment. The current priorities of the partnership, which also contribute to the Council's corporate goal of "Helping communities to be safe, active and healthy" are:

- Reducing Crime, the Fear of Crime and Anti-Social Behaviour
- Protecting and Supporting Vulnerable People and Victims of Crime
- Reduction in the Harm Caused by Alcohol and Drug Misuse
- Promoting Road Safety and Challenging Irresponsible Driving
- Reducing Reoffending

3.1.3 The vision of the new PCC is “Safe and secure communities are the bedrock on which we build success and wellbeing for all”. This is evidenced in the plan with it having a clear victim centric approach. The initial view of the author of this report is that the proposed policing priorities are to be commended and support the current priorities of the community safety partnership. However, at the initial launch of this draft plan there was some valuable feedback from Leaders and Chief Officers across Essex. The proposed policing priorities are:

- More local, visible and accessible policing
- Crack down on anti-social behaviour
- Be tough on domestic abuse
- Reverse the trend in serious violence
- Tackle gangs and organised crime
- Protect children and vulnerable people from harm
- Improve safety on our roads

3.1.4 A full copy of the plan is attached as **APPENDIX 1** which includes a narrative on each priority area.

3.2 **Suggested Consultation Response**

3.2.1 The following response has been drafted for Members consideration. ‘The Council believes that the proposed plan complements the existing priorities of Maldon Community Safety Partnership and it addresses both emerging threats and the concerns of the public particularly in relation to police visibility. The plan is very ambitious around the recruitment of special constables and whilst this is greatly welcomed to provide more local focus in rural areas progress must be fed back on a regular basis because expectations will be high. Failure to deliver on the police visibility agenda will create a wider void between the public and police on satisfaction and the ability to perform and detect crime in rural areas’.

4. **CONCLUSION**

4.1 The proposed police and crime plan should be welcomed because it has a clearer focus for the district of Maldon particularly in relation to police visibility / accessibility, vulnerability, anti-social behaviour and road safety. Whilst there is little value in setting rigid reporting mechanisms in relation to crime it will be important for the public to have a clear idea of how success will be measured in relation to the delivery of this plan. There will be opportunities for Members to scrutinise the work of the community safety partnership twice yearly through the Overview and Scrutiny

Committee (sitting as Crime and Disorder Committee) and the input of the OPCC should be considered for future committees during the cycle of this plan (2016 – 2020). Whilst the timescale for consultation on this plan is tight the author of this report has informed the OPCC of this meeting and they are prepared to consider comments after the formal cut-off date of 7 October 2016 providing they are provided in a timely fashion.

5. IMPACT ON CORPORATE GOALS

- 5.1 Crime prevention and effective policing contribute to the Council’s Corporate Goal of “Helping communities to be safe, active and healthy” and relevant actions are highlighted as activities in the current business plan for the directorate for 2016 / 17. The proposed new priorities also complement the current priorities for the Community Safety Partnership for 2016 / 17.

6. IMPLICATIONS

- (i) **Impact on Customers** – Helping communities to be safe, active and healthy. The new ethos of the OPCC plan will enable Maldon to build stronger and safer communities.
- (ii) **Impact on Equalities** – The plan has a clear focus on both domestic abuse and protecting children and vulnerable people from harm.
- (iii) **Impact on Risk** – Public expectations of the delivery of this plan will focus on more local, visible and accessible policing.
- (iv) **Impact on Resources (financial)** – None.
- (v) **Impact on Resources (human)** – none identified
- (vi) **Impact on the Environment** – None.

Background Papers: **APPENDIX 1** – Police and Crime Plan 2016 – 2020 (OPCC)

Enquiries to: Spencer Clarke, Community Safety Manager, (Tel: 01621 875814).

This page is intentionally left blank

Police and Crime Plan 2016 - 2020

Roger Hirst

Police and Crime Commissioner for Essex

The Vision

Safe and secure communities are the bedrock on which we build success and wellbeing for all.

The Police and Crime Plan

- The Police and Crime Plan sets out the policing priorities and aims for keeping Essex safe.
- The plan brings together police, partners and the public of Essex to build safe and secure communities, to ensure the public have confidence in their police force and that victims are satisfied with the service and support they receive.
- The plan builds on existing partnerships, developing them in new and ambitious ways, including greater collaboration between police and fire and closer working with local councils, community safety partnerships, the voluntary and community sector and Health.

For information on the current police and crime performance, please click [here](#)

A Victim Centric Approach

- We believe victims should be at the centre of the criminal justice system and are placing a special emphasis on their needs within each and every policing priority area.
- Every victim should receive the services they are entitled to under the [Victims Code](#) and we will ensure that the Criminal Justice agencies are held to account for delivery against this code.
- Any person who reports a crime should be kept informed and updated about their case.
- We want to commission services which are driven by the needs of the victim and which regularly seeks feedback to improve and provide even better support.
- We also want to continue to develop our victim-focused Restorative Justice (RJ) programme, enabling more victims to have access to these services.
- Every victim must have a voice and we will ensure that supporting victims is an intrinsic part of the Police and Crime Plan, so their voice can be heard and they are able to cope and recover from their experience.

Engaging on the Police and Crime Plan

- Full and widespread engagement will take place across Greater Essex using a variety of channels.
- We will seek and listen to the views of partners, local authorities, health, voluntary and community groups, schools, charities and members of the public.
- Feedback will be used to develop the plan further prior to publication.



Engagement Begins	Partner and Specific Group Workshops	Public Survey Launches	Presented to the Police and Crime Panel	Published
July	24 August to 22 September	Early September	Late October	Late November

The 7 Policing Priority Areas

1. More local, visible and accessible policing.
2. Crack down on anti-social behaviour.
3. Be tough on domestic abuse.
4. Reverse the trend in serious violence.
5. Tackle gangs and organised crime.
6. Protect children and vulnerable people from harm.
7. Improve safety on our roads.

Priority 1 - More local, visible and accessible policing

“Ensuring that crime prevention is based in the community, that victims come first, and that you know what is happening in your neighbourhood”



We will:

- a Make it easy to contact the police through ‘Do It Online’ and 101 and ensure that the public get a swift and responsive service from the police.
- b Boost community volunteering and grow the police family – doubling the Special Constabulary, with a Special Constable in every town and village.
- c Give every front line police officer a smart phone or tablet, enabling mobile policing, so they can reduce time spent on paperwork and have more time on patrol.
- d Help the rural communities by preventing rural crime, strengthening farm watch, supporting the Rural Crime Forum and recruiting more Rural Specials.
- e Establish Community Safety Hubs in every district with police co-located with local community safety partners to deliver joined up responses to tackle locally defined priorities.

continued

Priority 1 - More local, visible and accessible policing continued

“Ensuring that crime prevention is based in the community, that victims come first, and that you know what is happening in your neighbourhood”



We will:

- f** Expect Community Safety Partnerships to set the local Community Policing Team priorities to ensure community confidence in the police.
- g** Help the local businesses to prevent crime, strengthening the Business Forum and help the local economy to thrive.
- h** Deliver a more visible police presence, including targeted patrols in crime hotspots, town centres and around the night time economy.
- i** Improve communications and contact between the police and local communities, so the public have access to information and advice on crime and anti-social behaviour in their area.
- j** Support increased participation in Neighbourhood Watch, Street Pastors, Active Citizens and Volunteer Police Cadets through more timely information sharing and better engagement.

Priority 2 - Crack down on anti-social behaviour

“Keeping our communities safe across the whole of Essex, reducing the disruption and distress anti-social behaviour causes people”



We will:

- a** Tackle low-level ASB to prevent longer-term and more serious crime as supported by the ‘broken windows’ theory.
- b** Target repeat and high harm anti-social behaviour and bring those perpetrators to justice.
- c** Share intelligence to tackle anti-social behaviour through the further development of community safety hubs in every district policing area to include police, community safety teams, licensing, housing and environmental health.
- d** Improve the response of the police and partners to local anti-social behaviour by listening to local communities and drawing on available evidence, so as to increase public confidence.
- e** Be clear to perpetrators on the effects their behaviours have on individuals and communities and ensure they understand the consequences and give victims the opportunity to communicate that through the Restorative Justice (RJ) process.
- f** Ensure the public are kept informed about what is being done about anti-social behaviour by local policing teams and community safety partners.

Priority 3 – Be tough on domestic abuse

“Helping those who suffer in silence and reducing the impact on children and families”



We will:

- a Support victims and families affected by Domestic Abuse to feel safe, cope and recover through targeted help and commissioning victim led services.
- b Ensure children and young people affected by Domestic Abuse are kept safe from physical and emotional harm and are informed about healthy relationships.
- c Bring more perpetrators to justice and tackle offending behaviour through roll out of robust behaviour change programmes.
- d Train and develop front line professionals to recognise the signs and indicators of domestic abuse and to know how and where to go to for help.
- e Provide safe ways for victims to report Domestic Abuse and enable them to be able to make choices about using safe spaces.

continued

Priority 3 – Be tough on domestic abuse continued

“Helping those who suffer in silence and reducing the impact on children and families”



We will:

- f** Focus on prevention through the delivery of high impact awareness raising campaigns, and investment in education and information programmes for children and young people.
- g** Deliver an ambitious programme of transformation to improve our responses to Domestic Abuse through the Southend, Essex and Thurrock (SET) Domestic Abuse Partnership Board.
- h** Develop the Domestic Abuse Strategic Plan reflecting the wider national strategic priorities but focused on local needs.

Priority 4 - Reverse the trend in serious violence

“Catching criminals and supporting early intervention to improve public safety”



We will:

- a Develop a Violence Suppression Strategy across Essex and support partners to reduce the level of violence.
- b Commission effective prevention and diversionary activity for those at risk of involvement in violent crime, in particular children and young people.
- c Deliver community engagement programmes which encourage participation in knife amnesties.
- d Bring violent offenders to justice through targeted police enforcement , working closely with neighbouring forces such as the Metropolitan Police.
- e Deliver partnership responses to tackle alcohol and substance misuse – getting more people away from dependency into treatment.
- f Improve management of dangerous offenders in the community by closer collaboration with partners in probation services.

Priority 5 – Tackle gangs and organised crime

“Making sure crime doesn’t pay, tackling gangs and organised criminal groups and preventing the exploitation of vulnerable people”



We will:

- a Disrupt gangs and organised criminal groups through targeting gang structures and through regionally co-ordinated enforcement.
- b Develop and deliver a pan Essex Gangs Reduction Strategy focused on prevent, protect and prepare to dramatically reduce the level of gang activity.
- c Work with partners, including UK Border Agency (UKBA), National Crime Agency (NCA) and national and regional partners to support victims of human trafficking and modern slavery, and to bring perpetrators to justice.
- d Channel funds seized from criminal groups back into local communities.

continued

Priority 5 – Tackle gangs and organised crime continued

“Making sure crime doesn’t pay, tackling gangs and organised criminal groups and preventing the exploitation of vulnerable people”



We will:

- e Support rural communities and businesses to counter organised crime through improved participation in communication and information sharing between them and the police.
- f Tackle the exploitation of children recruited by gangs and prevent it from happening through early intervention and commissioning alternative activities for young people.
- g Disrupt and prevent organised drug distribution through improved intelligence shared between the police, partners and local communities to limit the harm drugs cause.
- h Work with local councils and employers to ensure immigrant ID checks and controls on landlords are implemented in the right way.

Priority 6 – Protecting children and vulnerable people from harm

“Ensure children and vulnerable people are appropriately safeguarded to protect them from harm and that they receive the help and support they need”



We will:

- a Commission services that identify and address the particular issues of child abuse (including child sexual abuse, emotional abuse, physical abuse and neglect) and Child Sexual Exploitation (CSE) promoting prevention and early intervention to keep children safe.
- b Ensure vulnerable people who have experienced harm receive appropriate support and are directly involved in the design of specialist victims services.
- c Help people with mental health and substance/alcohol misuse concerns, diverting them away from the criminal justice system into support services, through initiatives such as street triage.
- d Work with doctors, nurses, teachers and social workers to identify signs of abuse and understand how best to refer victims for support.

continued

Priority 6 – Protecting children and vulnerable people from harm continued

“Ensure children and vulnerable people are appropriately safeguarded to protect them from harm and that they receive the help and support they need”



We will:

- e Deliver awareness campaigns for children and young people to improve understanding of healthy relationships through schools and public health information.
- f Tackle the perpetrators who groom individuals or groups, including where victims are targeted online.
- g Respond to the needs of local communities which are vulnerable to specific crime types such as hate crime, elder abuse, harassment, female genital mutilation (FGM), forced marriage and honour based abuse (HBA).
- h Work with partners to improve reporting of Hate Crime incidents using Hate Crime Reporting Centres and other third party channels.

Priority 7 – Improve safety on our roads

“Reducing harm on the roads and promoting safer driving”



We will:

- a Reduce the numbers of people killed or seriously injured on our roads through the work of the multiagency Safer Essex Roads Partnership on education and enforcement.
- b Improve take-up of safe driving programmes, working with drivers to help change behaviours so they understand their responsibilities for safe driving, with a particular focus on use of mobile phones, speeding, drug and drink driving.
- c Encourage people to report poor driving and engage with the police and partners to reduce anti-social behaviour on the roads.

continued

Priority 7 – Improve safety on our roads continued

“Reducing harm on the roads and promoting safer driving”



We will:

- d** Target people and vehicles who pose a high risk of harm to our communities, especially those who use our roads who are involved in serious and organised crime, through automatic number plate recognition (ANPR) and other intelligence gathering.
- e** Maximise the use of technology and intelligence-led policing to identify and convict those who are breaking the law and causing harm on our roads.
- f** Work with partners to ensure appropriate road traffic regulations are in place, such as speed limits, cameras and safe road design.
- g** Encourage volunteer action to improve road safety, such as Community Speed Watch.

National Policing Requirements

The Police and Crime Commissioner and Essex Police will have full regard to the Governments Strategic Policing Requirement

- The Police and Crime Commissioner is committed to Essex Police playing a full and active role in tackling national threats such as terrorism, civil emergencies, threats to public order, national cyber or digital crime and child sexual abuse.
- The Police and Crime Commissioner and Chief Constable will address these national threats by preparing a clear and robust plan to ensure there is a readiness and ability to respond when necessary.
- These national threats will also involve a co-ordinated response across the National Crime Agency and partner forces.
- Essex Police will continue to build on strong collaboration with Kent Police through the shared Serious Crime Directorate, and with police forces across the Eastern region, to tackle serious organised crime.
- To access the Governments Strategic Policing Requirement click [here](#).

Collaboration – The Next Four Years

Essex Police and Essex County Fire and Rescue Service

- Deliver joined up emergency services to the public of Essex.
- Deliver efficiencies by sharing HQ site and back office functions.
- Improve prevention and public safety outcomes by collaborating across services.

Other Police Forces

- Work across the Eastern Region forces through the 'Seven Force Strategic Alliance'.
- Closer working with the Metropolitan Police, sharing intelligence and expertise.
- Continue to build on and develop our strong collaboration with Kent Police.

Strategic Partnerships

- Commitment to invest in key strategic partnerships such as Essex Partnership Board, Essex Criminal Justice Board, Safer Essex, Reducing Reoffending Board, Safeguarding Boards and Community Safety Partnerships.

Wider Partnerships

- The PCC continues to be committed to working with a wide range of partners including local councils, local businesses, the voluntary and community sectors and Health.

Delivering the Police and Crime Plan

Finance and Resources

- Drive forward police modernisation programme.
- Make effective and efficient use of resources through a zero based budgeting approach, identifying efficiencies and reinvesting back into areas of priority and high demand.
- Strengthen the police funding base working closely with national and local government.

Estate Transformation

- Rationalise the police estate, making it fit for purpose for 21st century policing.
- Work to integrate the Police and Fire HQs, delivering better value for money for the people of Essex.
- Create new public access areas within shared public buildings, where the public can meet with local policing teams.

Delivering the Police and Crime Plan continued

Partnership Working

- Closer working with local partners including health, local authorities, voluntary organisations, Community Safety Partnerships and business and rural crime forums to help make our communities safer.
- Develop and invest in multiagency crime prevention programmes.
- Combine our efforts to tackle system wide challenges such as mental health and alcohol/substance misuse.
- Champion and support local volunteering, including Special Constables, Neighbourhood and Speed Watch, Farm Watch, Volunteer Police Cadets and Independent Custody Visitors.
- Reducing the risk of reoffending by getting offenders out of crime and into employment and training and settled accommodation.

Effective Use of Technology

- Deliver mobile policing to all frontline officers.
- Improve police contact and engagement with the public through digital channels.
- Strengthen our ability to share data and intelligence across agencies to prevent crime, support victims and target offenders.
- Ensure effective delivery of the Athena Police IT system, achieving a step change in the use of police technology.

Your views count

This is your opportunity to help shape the policing priority areas for our communities;

- Do we have the right policing priority areas?
- Are any policing priority areas missing?
- How can the Police and Crime Commissioner, Essex Police and wider partners work with local communities to help keep our communities safer?

To tell us what you think you can;

- [Go online](#) and complete the public survey - it launches in early September.
- Or email policeandcrimeplan2016@essex.pnn.police.uk
- The final Police and Crime Plan will be published at the end of November.



REPORT of DIRECTOR OF CUSTOMERS AND COMMUNITY

to

OVERVIEW AND SCRUTINY COMMITTEE (MEETING AS THE CRIME AND DISORDER COMMITTEE)

12 OCTOBER 2016

MALDON DISTRICT COMMUNITY SAFETY PARTNERSHIP UPDATE

1. PURPOSE OF THE REPORT

- 1.1 Members are asked to note the progress of activities undertaken by the Maldon Community Safety Partnership since the last meeting held on 9 March 2016.

2. RECOMMENDATIONS

- (i) that Members note the proposed priorities and action plan for 2016 / 17 and the success of the initiatives undertaken by the partnership to date;
- (ii) that Members note the questions and answers arising from the meeting of the Parish Clerks Forum on 5 July as detailed within **APPENDIX 2** of this report

3. SUMMARY OF KEY ISSUES

3.1 Statutory Duties

- 3.1.1 The statutory duties for the community safety partnership were reported to the committee at the previous meeting. Work on the strategic assessment for 2016 will commence to determine the strategic priorities for 2017 / 18 and officers will work alongside the newly appointed analyst for Local Policing Area North together other partners. Members are reminded that the current priorities for Maldon District are set out below and they complement the Essex Police strategic themes and the draft priorities identified the new Police and Crime Commissioner plan:

- Reducing Crime, the Fear of Crime and Anti-Social Behaviour;
- Protecting and Supporting Vulnerable People and Victims of Crime;
- Reduction in the Harm Caused by Alcohol and Drug Misuse;
- Promoting Road Safety and Challenging Irresponsible Driving;
- Reducing Reoffending.

- 3.1.2 These priorities contribute to the Council's Corporate Goal of "Helping communities to be safe, active and healthy" and are highlighted as activities in the business plan for the directorate for 2016 / 17. Each activity has a clear timescale and milestone to

enable performance monitoring of each project associated to the activity. The most recent crime figures for the period 1 April 2016 to 31 July 2016 (compared to the same period last year) show an increase in all crime by 8.5% (67 more offences) and a decrease in anti-social behaviour by 8.3% (93 less incidents). Members should note that at the time of writing all crime performance for Essex has shown an increase by 8.3%. A copy of the most recent Essex Police strategic management performance data for the whole of Essex is attached as **APPENDIX 1** in order for Members to make comparisons across Essex.

- 3.1.3 Members should note that the partnership was notified by Essex Police that two domestic homicides had occurred in the district during July 2015 and March 2016 respectively and following meetings with partner organisations decisions were made to notify the Home Office that the incidents met the criteria of a Domestic Homicide Review which under Section 9 of the Domestic Violence, Crime and Victims Act 2004 the community safety partnership has a statutory duty to undertake. The Home Office has acknowledged these letters and work continues on each review.
- 3.1.4 The Community Safety Manager now attends strategic meetings which also support the Essex Police high level strategic priorities which include child sexual exploitation, violence suppression, gangs and vulnerabilities, modern day slavery and radicalisation. Each one of these themes now has an action plan for delivery for the community safety partnership, district council and partners. The Community Safety Manager also represented the partnership on the HM Inspectorate of Constabulary (HMIC) workshop on police effectiveness on 9 September 2016. Maldon District Council accessed a one-off grant of £10,000 from the Home Office to facilitate local training within the District for Preventing Violent Extremism. An Officer from the team, Ali Burlington, has already undertaken WRAP (Workshop to Raise Awareness of Prevent) training and will be cascading this training to frontline staff and community safety partners. This funding was also used to promote awareness of radicalisation and ideology for Essex County Council (ECC) Social Care staff where Me & You Education delivered training on 22 September 2016. The partnership has also recently accessed funds from the Essex Police and Crime Commissioner and Behaviour Attendance Partnership to deliver awareness sessions on gangs, drugs and knives. Additional education is being offered to schools within the district.
- 3.1.5 The next scheduled Overview and Scrutiny Committee meeting to discuss the performance of the partnership will be this current meeting on Wednesday 12 October 2016. The annual face the public event is scheduled for Tuesday 1 November 2016 and will be held in partnership with the Police and Crime Commissioner and Essex Police.

3.2 Police and Crime Commissioner (PCC) Update

- 3.2.1 Members should note that Roger Hirst was elected to the role of PCC following with the election which took place on 5 May 2016.
- 3.2.2 A draft PCC plan for the new commissioner is currently out for consultation and a report has been prepared for Community Services Committee in order for comments to be considered for a corporate response. Officers and members have attended the “deep dive” consultation sessions for the proposed priority themes as part of this consultative exercise. The vision of the new PCC is “Safe and secure communities

are the bedrock on which we build success and wellbeing for all”. This is evidenced in the plan with it having a clear victim centric approach. The initial view of the author of this report is that the proposed policing priorities are to be commended and support the current priorities of the community safety partnership. However, at the initial launch of this draft plan there was some valuable feedback from Leaders and Chief Officers across Essex which will be addressed in the final version. The proposed policing priorities are:

- More local, visible and accessible policing;
- Crack down on anti-social behaviour;
- Be tough on domestic abuse;
- Reverse the trend in serious violence;
- Tackle gangs and organised crime;
- Protect children and vulnerable people from harm;
- Improve safety on our roads.

3.2.3 Core funding for 2016 / 17 has been confirmed as £14,235 (which was the same figure for 2015 / 16). The partnership has also been successful in obtaining joint funds from the Office of the Police and Crime Commissioner (OPCC) for underpass projects and education awareness sessions on gangs, drugs and knife crime as mentioned earlier in this report. The most recent graffiti art project was completed in August 2016 in Burnham-on-Crouch where young people from the area were encouraged to participate and take ownership of the area. This was a good example of community cohesion and strengthening local communities. The Community Safety Manager is working with the OPCC to commission a service to provide education and mentoring around gangs and the associated violence linked with them. The OPCC has committed funding to the sum of £100,000 for 2016 / 17 and 2017 / 18.

3.3 **Community Safety Hubs**

3.3.1 The first meeting of the community safety hub for Maldon and Chelmsford will be on Tuesday 4 October 2016. Initially, this will be the respective Councils and Essex Police prior to extending the invite to community safety partners in November 2016. Sub groups of the partnership continue to meet on a regular basis and work streams for each individual group are effectively impacting on various areas of community safety. Good examples of this is the work of the MAG and BAG (Maldon and Burnham-on-Crouch Action Groups) and the newly formed Young Persons Anti-Social Behaviour (ASB) Group which involves secondary and primary schools who can raise issues in relation to young people on the risk of offending and thus provide focussed early intervention. There is a natural cross cutting of projects across the respective groups, which allow partners to feed into actions where appropriate. Team members regularly attend police tasking on a fortnightly basis and receive regular information such as Operation Insight / Element data, MACE data and safeguarding data to ensure that the partnership remains responsive to emerging crime trends such as monitoring of the offender cohort, community cohesion issues and children at risk of exploitation.

3.4 Progress on the Action Plans

3.4.1 The partnership has delivered education and interventions for a wide range of areas for this current year which has included work on:

- Gangs, drugs and knives;
- Driver education and enforcement;
- Preventing Violent Extremism;
- The Independent Advisory Group;
- Community Engagement;
- Crucial Crew for Year 6 and Adults with Learning Disabilities;
- Reality Roadshow for Year 9;
- Stay Safe This Summer for Year 10;
- Keep Safe;
- Door Step Clubs;
- Domestic Violence Awareness;
- Supporting initiatives such as Mayland Boxing, Seven Freerun and Just Play;
- Restorative Justice;
- Child Sexual Exploitation (CSE) Awareness;
- Dementia Awareness.

3.4.2 The new High Sheriff, Lorna Rolfe JP, visited Maldon District Council on 19 September 2016 and met with the Chief Executive to discuss community safety issues. This was followed by a visit to Crucial Crew at Stow Maries Aerodrome. Crucial Crew is an educational session delivered to a majority of Maldon's primary schools (Year 6 students). This year's sets included sessions on alcohol, road safety, bullying, internet safety and stranger danger. The High Sheriff conveyed her thanks in writing following the visit and described the team as "a committed bunch of individuals and their enthusiasm is infectious". A full evaluation of this project is carried out each year to ensure that it improves every year and remains current.

3.4.3 At the meeting of this committee on 9 March 2016 it was resolved that 'officers report back to this Committee with the priorities decided by the Parish Councils following the meeting of the Parish Clerks Forum'. The meeting was held in early July and Inspector Andy Sawyer attended. Notes of the issues raised and answers given are detailed at **APPENDIX 2** of this report.

4. CONCLUSION

4.1 That Members note the proposed priorities and draft action plans for 2016 / 17 and that shared working arrangements between Maldon and Chelmsford continue to support local priorities, high level policing priorities and the proposed priorities of the new PCC plan. Maldon CSP remains efficient and responsive to emerging issues and more importantly positions itself strongly for future funding arrangements with the

Essex Police and Crime Commissioner, statutory partners and local / national initiatives.

5. IMPACT ON CORPORATE GOALS

- 5.1 These priorities contribute to the Council's Corporate Goal of "Helping communities to be safe, active and healthy" and are highlighted as activities in the new draft business plan for the directorate for 2016 / 17.

6. IMPLICATIONS

- (i) **Impact on Customers** – Helping communities to be safe, active and healthy.
- (ii) **Impact on Equalities** – None.
- (iii) **Impact on Risk** – None.
- (iv) **Impact on Resources (financial)** – Members should note that sustainable funding of posts to cover statutory duties will remain a challenge.
- (v) **Impact on Resources (human)** – As above.
- (vi) **Impact on the Environment** – None.

Background Papers:

APPENDIX 1 - Essex Police Performance Summary (July 2016).

APPENDIX 2 – Notes of Parish Clerks Forum

Enquiries to: Spencer Clarke, Community Safety Manager, (Tel: 01621 875814).

This page is intentionally left blank

Corporate Services

Essex Police Performance Summary to August 2016



Date: 15th September 2016

Unit: Performance Information Unit

Contact: Katie Roberts

Corporate Services: Performance Summary

Essex Police Performance Summary: To August 2016

1. Introduction

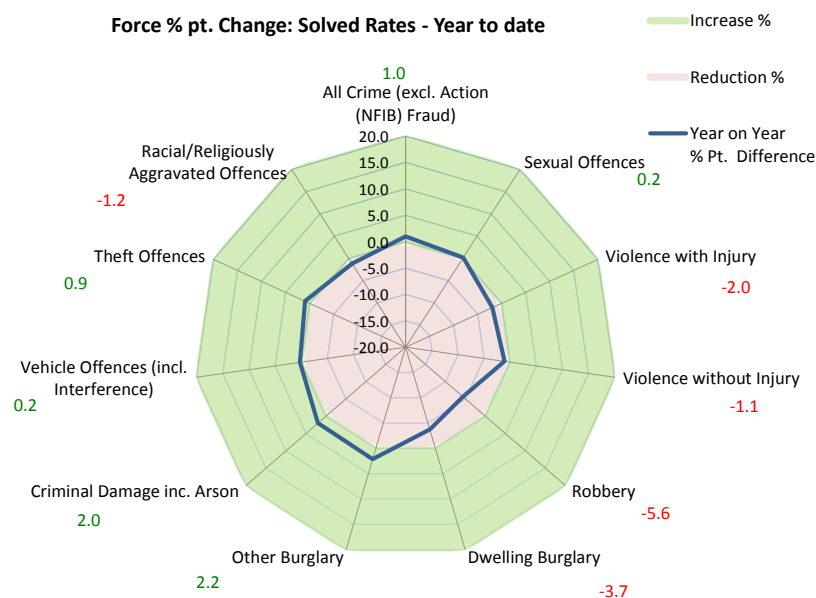
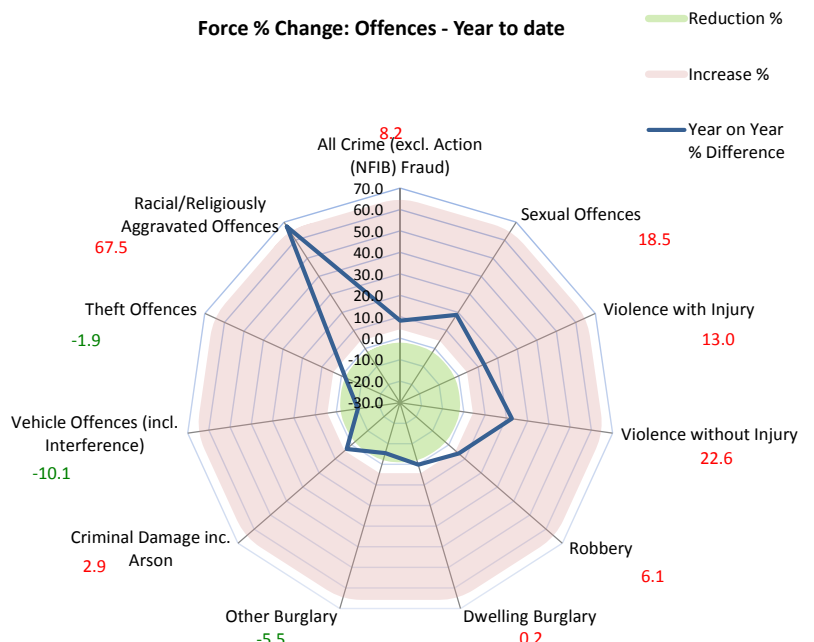
This performance summary is designed to pictorially represent how individual districts are performing within each crime type.

The report includes:

- Charts to show the cumulative (from April) percentage differences between the number of offences, and the percentage pt. differences between the solved rates, in each district, for the current period compared to the same period the previous year.
- Tables of data relating to both cumulative and rolling figures for this district.

Solved Rate: Essex Police could potentially still be under-extracting the number of crimes that have been solved.

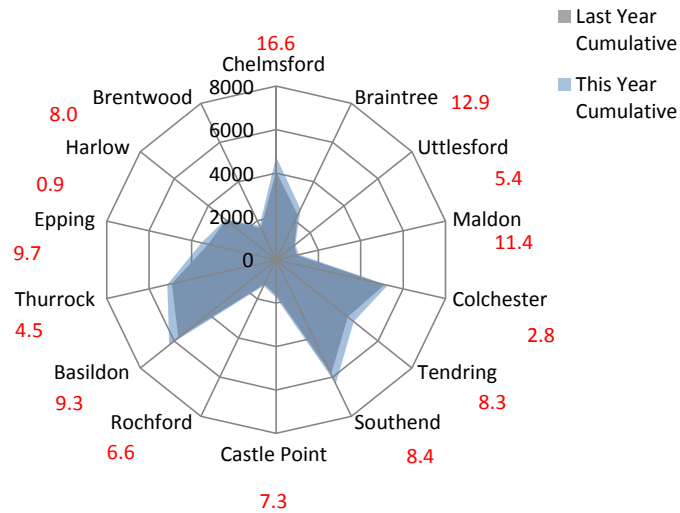
2. Current Position



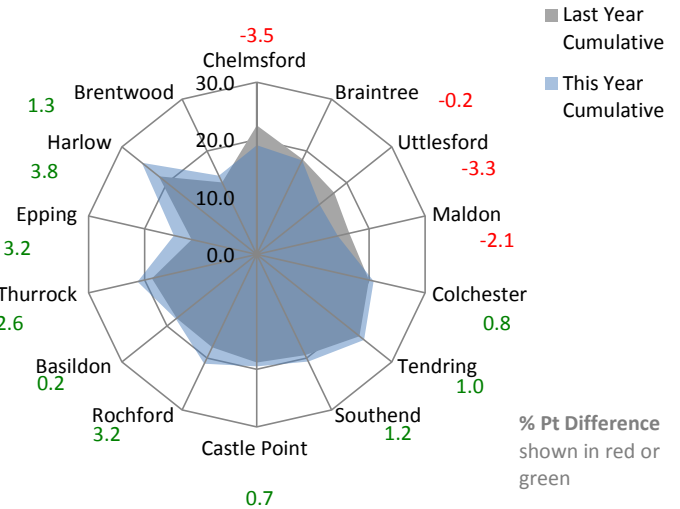
Corporate Services: Performance Summary

Essex Police Performance Summary: To August 2016

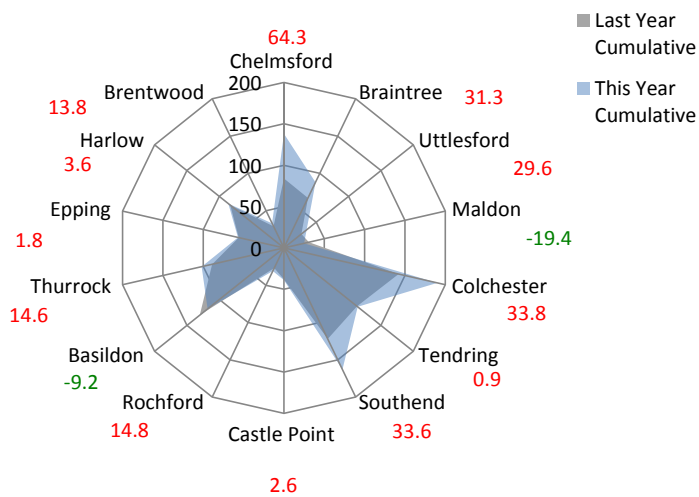
All Crime Offences - Year to date



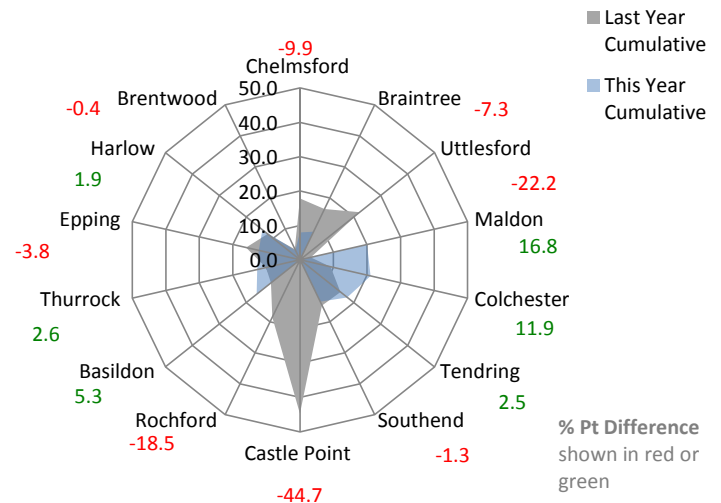
All Crime Solved Rate - Year to date



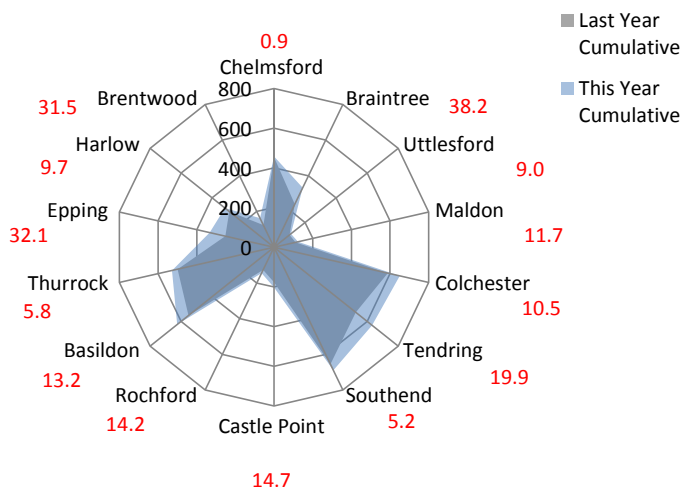
Sexual Offences - Year to date



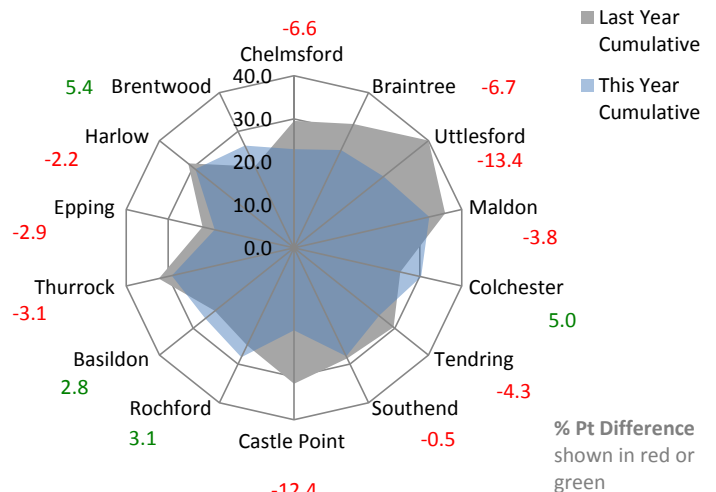
Sexual Offences Solved Rate - Year to date



Violence with Injury Offences - Year to date



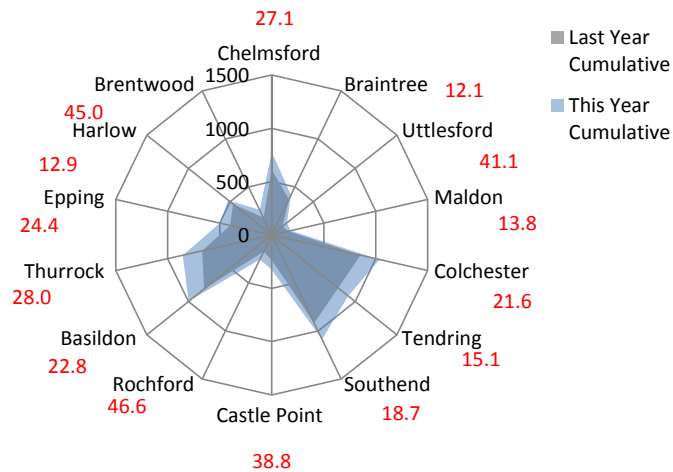
Violence with Injury Solved Rate - Year to date



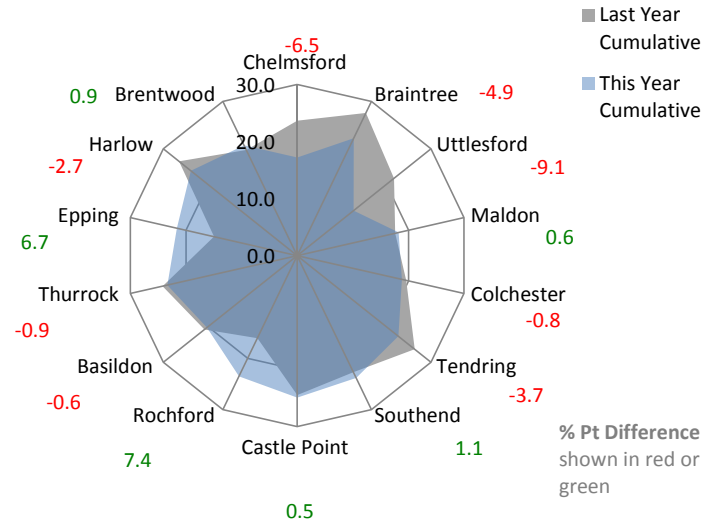
Corporate Services: Performance Summary

Essex Police Performance Summary: To August 2016

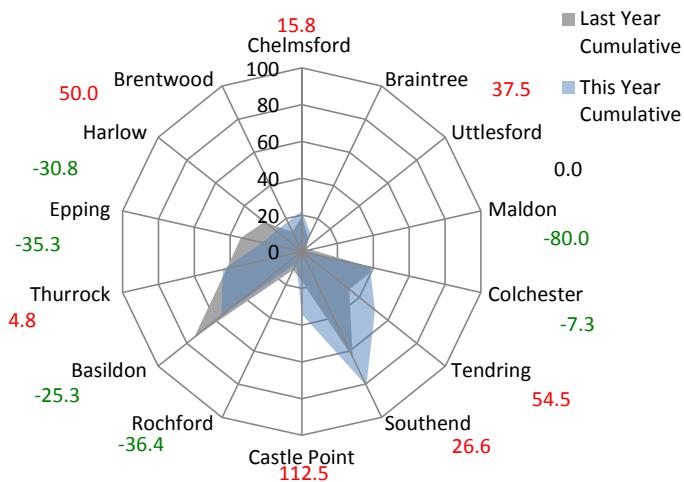
Violence without Injury Offences - Year to date



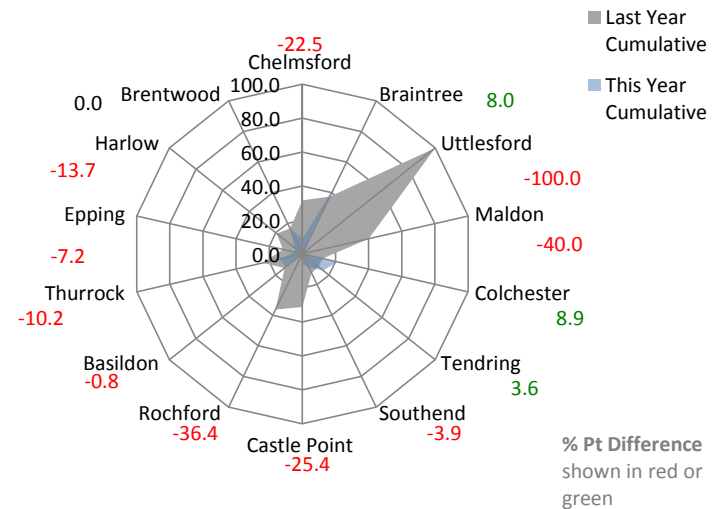
Violence without Injury Solved Rate - Year to date



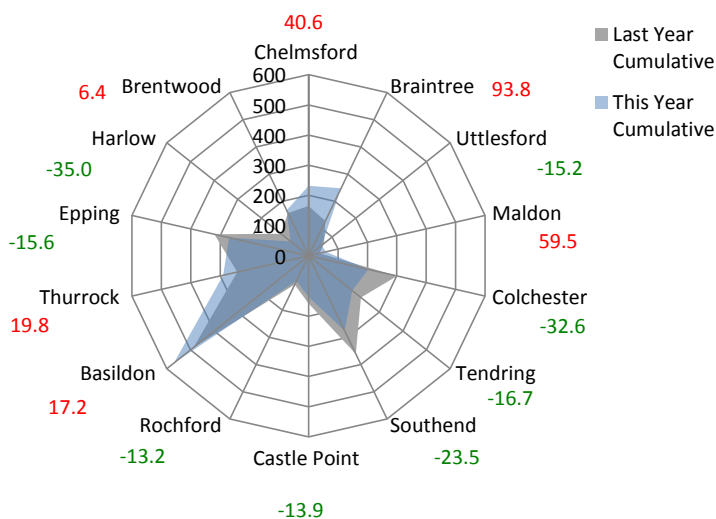
Robbery Offences - Year to date



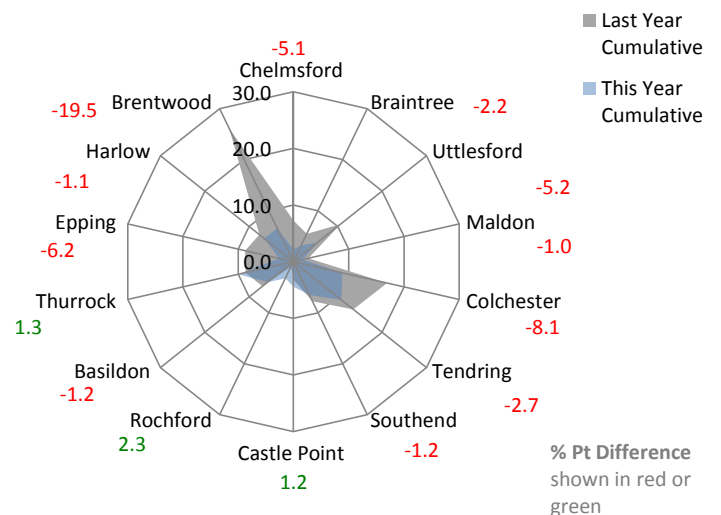
Robbery Solved Rate - Year to date



Dwelling Burglary Offences - Year to date



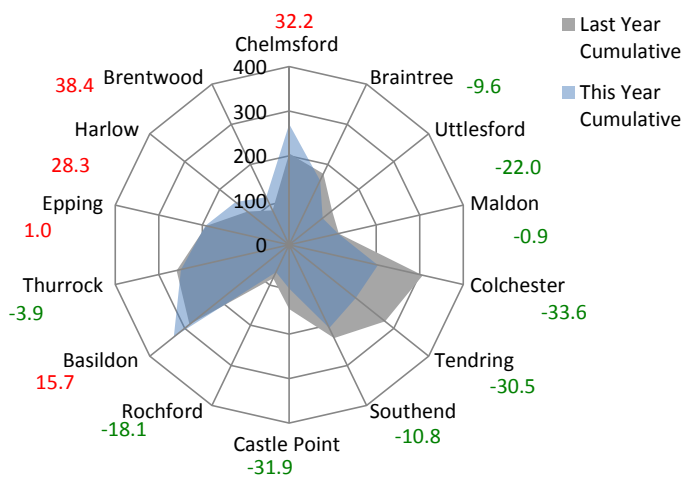
Dwelling Burglary Solved Rate - Year to date



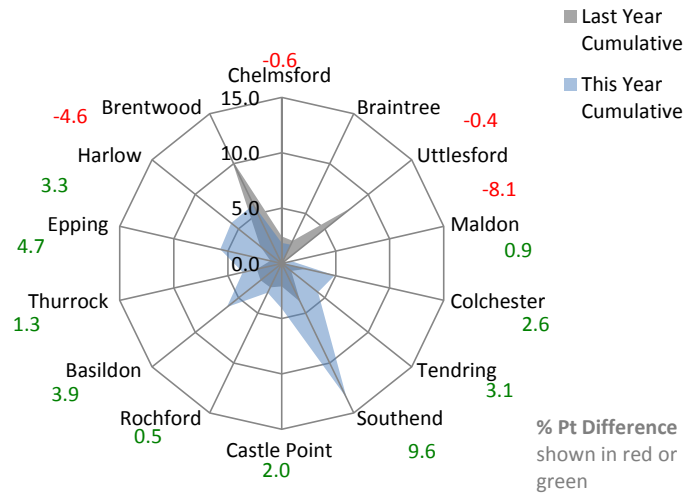
Corporate Services: Performance Summary

Essex Police Performance Summary: To August 2016

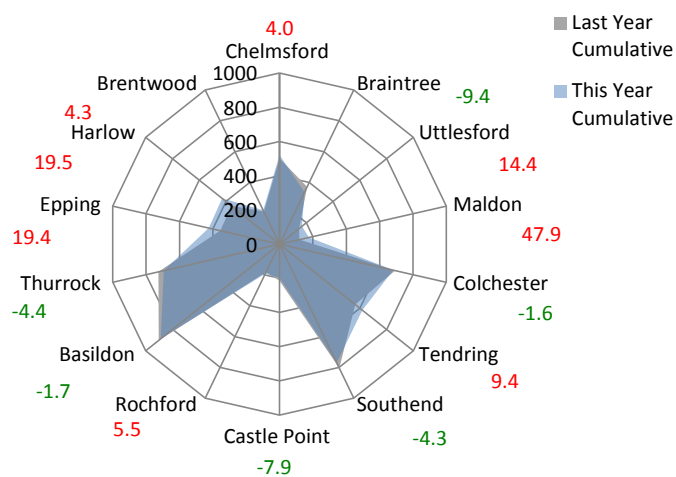
Other Burglary Offences - Year to date



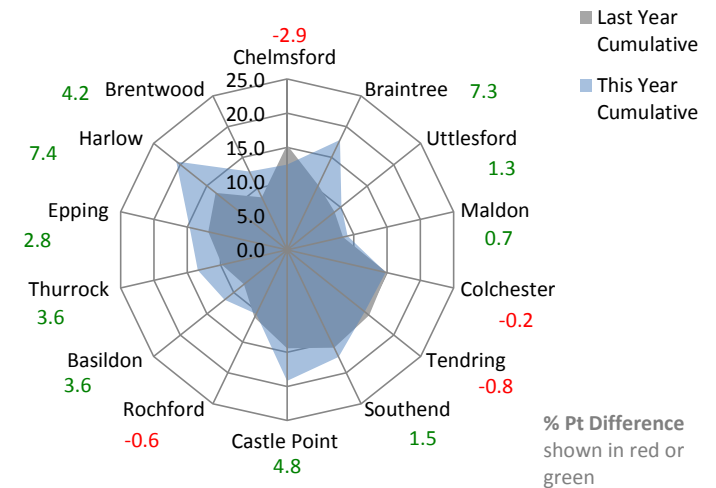
Other Burglary Solved Rate - Year to date



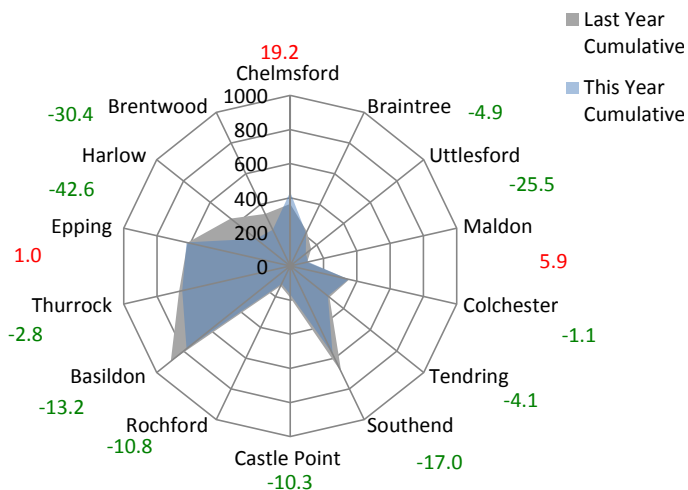
Criminal Damage Offences - Year to date



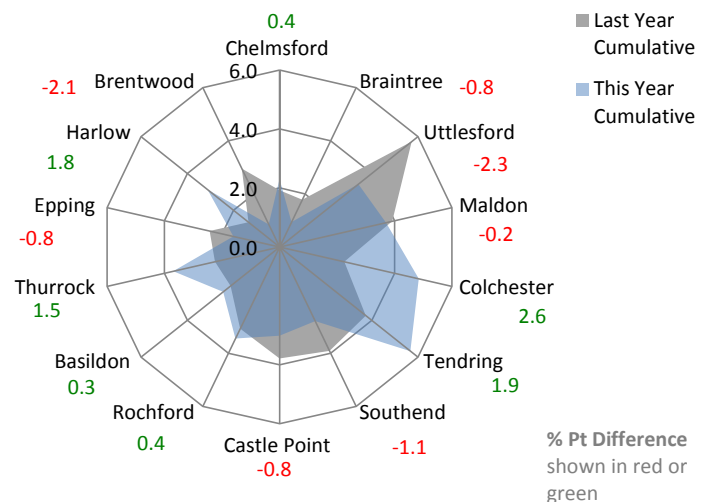
Criminal Damage Solved Rate - Year to date



Vehicle Offences - Year to date



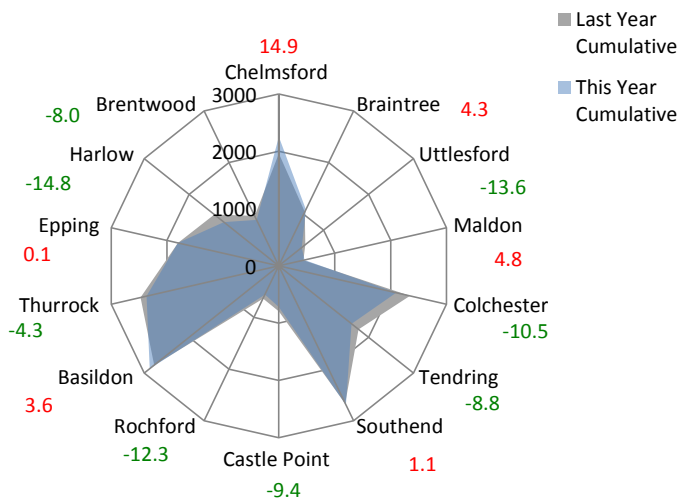
Vehicle Offences Solved Rate - Year to date



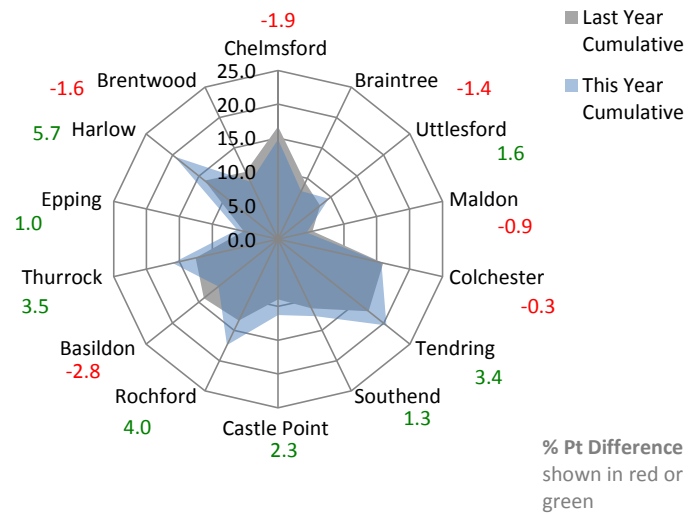
Corporate Services: Performance Summary

Essex Police Performance Summary: To August 2016

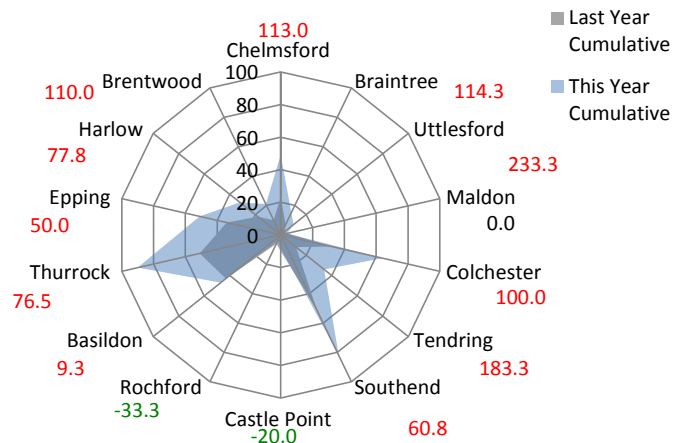
Theft Offences - Year to date



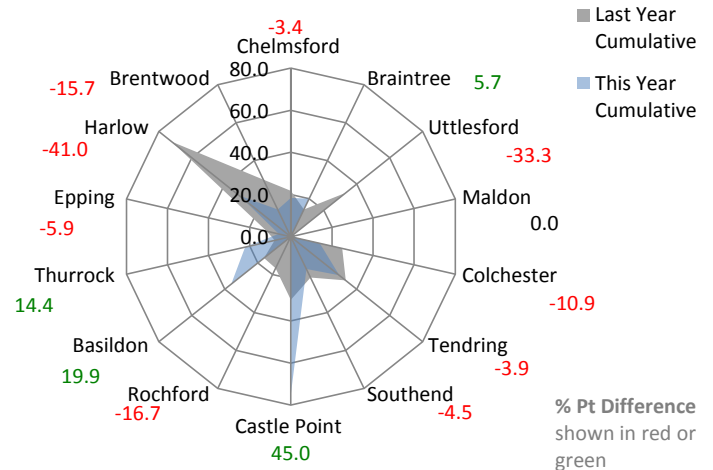
Theft Offences Solved Rate - Year to date



Racial / Religiously Aggravated Offences - Year to date % Difference



Racial/Religiously Aggravated Offences Solved Rate - Year to date



Corporate Services: Performance Summary
Essex Police Performance Summary

Force

Cumulative Year to August

Top Level	Offences				Outcomes				Solved Rates %		
Crime Type	2015	2016	# diff.	% diff.	2015	2016	# diff.	% diff.	2015	2016	% pt. diff.
Anti-Social Behaviour (incidents)	24681	24157	-524	-2.1	-	-	-	-	-	-	-
All Crime (excl. Action (NFIB) Fraud)	45955	49738	3783	8.2	8842	10060	1218	13.8	19.2	20.2	1.0
- State Based Crime	4384	6033	1649	37.6	2105	2683	578	27.5	48.0	44.5	-3.5
- Victim Based Crime	41571	43705	2134	5.1	6737	7377	640	9.5	16.2	16.9	0.7
Victim Based Crime	Offences				Outcomes				Solved Rates %		
Crime Type	2015	2016	# diff.	% diff.	2015	2016	# diff.	% diff.	2015	2016	% pt. diff.
Violence Against the Person	11665	13831	2166	18.6	2927	3254	327	11.2	25.1	23.5	-1.6
- Homicide	15	9	-6	-40.0	11	5	-6	-54.5	73.3	55.6	-17.8
- Violence with Injury	4766	5384	618	13.0	1358	1428	70	5.2	28.5	26.5	-2.0
- Violence without Injury	6884	8438	1554	22.6	1558	1821	263	16.9	22.6	21.6	-1.1
Sexual Offences	1052	1247	195	18.5	151	181	30	19.9	14.4	14.5	0.2
- Rape	392	448	56	14.3	44	30	-14	-31.8	11.2	6.7	-4.5
- Rape - Under 16 yrs	146	142	-4	-2.7	19	19	0	0.0	13.0	13.4	0.4
- Rape - Over 16 yrs	246	306	60	24.4	25	11	-14	-56.0	10.2	3.6	-6.6
- Other Sexual Offences	660	799	139	21.1	107	151	44	41.1	16.2	18.9	2.7
Robbery	392	416	24	6.1	72	53	-19	-26.4	18.4	12.7	-5.6
- Robbery of business property	31	41	10	32.3	16	20	4	25.0	51.6	48.8	-2.8
- Robbery of Personal Property	361	375	14	3.9	56	33	-23	-41.1	15.5	8.8	-6.7
Theft Offences	22222	21790	-432	-1.9	2811	2962	151	5.4	12.6	13.6	0.9
- Burglary	5538	5397	-141	-2.5	345	288	-57	-16.5	6.2	5.3	-0.9
- Dwelling Burglary	2892	2897	5	0.2	275	168	-107	-38.9	9.5	5.8	-3.7
- Other Burglary	2646	2500	-146	-5.5	70	120	50	71.4	2.6	4.8	2.2
- Vehicle Offences (incl. Interference)	5552	4989	-563	-10.1	147	143	-4	-2.7	2.6	2.9	0.2
- Theft from Vehicle	3591	2997	-594	-16.5	51	42	-9	-17.6	1.4	1.4	0.0
- Theft of Motor Vehicle	1400	1485	85	6.1	87	88	1	1.1	6.2	5.9	-0.3
- Vehicle Interference	561	507	-54	-9.6	9	13	4	44.4	1.6	2.6	1.0
- Theft	11132	11404	272	2.4	2319	2531	212	9.1	20.8	22.2	1.4
- Theft from the Person	682	704	22	3.2	25	25	0	0.0	3.7	3.6	-0.1
- Theft of Pedal Cycle	1067	904	-163	-15.3	40	36	-4	-10.0	3.7	4.0	0.2
- Shoplifting	4026	4358	332	8.2	1874	2007	133	7.1	46.5	46.1	-0.5
- Other Theft	5357	5438	81	1.5	380	463	83	21.8	7.1	8.5	1.4
Criminal Damage inc. Arson	6240	6421	181	2.9	776	927	151	19.5	12.4	14.4	2.0
- Criminal Damage	6012	6207	195	3.2	759	911	152	20.0	12.6	14.7	2.1
- Arson	228	214	-14	-6.1	17	16	-1	-5.9	7.5	7.5	0.0
Racial/Religiously Aggravated Offences	311	521	210	67.5	67	106	39	58.2	21.5	20.3	-1.2
State Based Crime	Offences				Outcomes				Solved Rates %		
Crime Type	2015	2016	# diff.	% diff.	2015	2016	# diff.	% diff.	2015	2016	% pt. diff.
Drug Offences	1160	1255	95	8.2	1028	1134	106	10.3	88.6	90.4	1.7
- Trafficking of Drugs	250	256	6	2.4	191	204	13	6.8	76.4	79.7	3.3
- Possession of Drugs	910	999	89	9.8	837	930	93	11.1	92.0	93.1	1.1
Possession of Weapons	418	496	78	18.7	264	392	128	48.5	63.2	79.0	15.9
Public Order	2132	3411	1279	60.0	605	868	263	43.5	28.4	25.4	-2.9
Miscellaneous Crimes against Society	674	871	197	29.2	208	289	81	38.9	30.9	33.2	2.3

Corporate Services: Performance Summary
Essex Police Performance Summary

Force

Rolling 12 Months to August

Top Level	Offences				Outcomes				Solved Rates %		
Crime Type	2015	2016	# diff.	% diff.	2015	2016	# diff.	% diff.	2015	2016	% pt. diff.
Anti-Social Behaviour (incidents)	55218	52097	-3121	-5.7	-	-	-	-	-	-	-
All Crime (excl. Action (NFIB) Fraud)	103464	114587	11123	10.8	24559	24629	70	0.3	23.7	21.5	-2.2
- State Based Crime	9825	12856	3031	30.8	6033	6175	142	2.4	61.4	48.0	-13.4
- Victim Based Crime	93639	101731	8092	8.6	18526	18454	-72	-0.4	19.8	18.1	-1.6
Victim Based Crime	Offences				Outcomes				Solved Rates %		
Crime Type	2015	2016	# diff.	% diff.	2015	2016	# diff.	% diff.	2015	2016	% pt. diff.
Violence Against the Person	25013	31552	6539	26.1	7805	8042	237	3.0	31.2	25.5	-5.7
- Homicide	21	27	6	28.6	15	14	-1	-6.7	71.4	51.9	-19.6
- Violence with Injury	10645	12213	1568	14.7	3652	3558	-94	-2.6	34.3	29.1	-5.2
- Violence without Injury	14347	19312	4965	34.6	4138	4470	332	8.0	28.8	23.1	-5.7
Sexual Offences	2579	2983	404	15.7	413	460	47	11.4	16.0	15.4	-0.6
- Rape	936	1039	103	11.0	118	99	-19	-16.1	12.6	9.5	-3.1
- Rape - Under 16 yrs	331	328	-3	-0.9	51	58	7	13.7	15.4	17.7	2.3
- Rape - Over 16 yrs	605	711	106	17.5	67	41	-26	-38.8	11.1	5.8	-5.3
- Other Sexual Offences	1643	1944	301	18.3	295	361	66	22.4	18.0	18.6	0.6
Robbery	944	1029	85	9.0	197	176	-21	-10.7	20.9	17.1	-3.8
- Robbery of business property	99	114	15	15.2	30	48	18	60.0	30.3	42.1	11.8
- Robbery of Personal Property	845	915	70	8.3	167	128	-39	-23.4	19.8	14.0	-5.8
Theft Offences	51030	50913	-117	-0.2	8123	7591	-532	-6.5	15.9	14.9	-1.0
- Burglary	13359	12888	-471	-3.5	1154	813	-341	-29.5	8.6	6.3	-2.3
- Dwelling Burglary	7098	6786	-312	-4.4	864	504	-360	-41.7	12.2	7.4	-4.7
- Other Burglary	6261	6102	-159	-2.5	290	309	19	6.6	4.6	5.1	0.4
- Vehicle Offences (incl. Interference)	12636	11900	-736	-5.8	533	482	-51	-9.6	4.2	4.1	-0.2
- Theft from Vehicle	8159	7262	-897	-11.0	200	171	-29	-14.5	2.5	2.4	-0.1
- Theft of Motor Vehicle	3137	3411	274	8.7	299	270	-29	-9.7	9.5	7.9	-1.6
- Vehicle Interference	1340	1227	-113	-8.4	34	41	7	20.6	2.5	3.3	0.8
- Theft	25035	26125	1090	4.4	6436	6296	-140	-2.2	25.7	24.1	-1.6
- Theft from the Person	1431	1761	330	23.1	44	58	14	31.8	3.1	3.3	0.2
- Theft of Pedal Cycle	2256	2041	-215	-9.5	112	95	-17	-15.2	5.0	4.7	-0.3
- Shoplifting	9298	10286	988	10.6	4977	4977	0	0.0	53.5	48.4	-5.1
- Other Theft	12050	12037	-13	-0.1	1303	1166	-137	-10.5	10.8	9.7	-1.1
Criminal Damage inc. Arson	14073	15254	1181	8.4	1988	2185	197	9.9	14.1	14.3	0.2
- Criminal Damage	13608	14781	1173	8.6	1933	2152	219	11.3	14.2	14.6	0.4
- Arson	465	473	8	1.7	55	33	-22	-40.0	11.8	7.0	-4.9
Racial/Religiously Aggravated Offences	828	965	137	16.5	256	234	-22	-8.6	30.9	24.2	-6.7
State Based Crime	Offences				Outcomes				Solved Rates %		
Crime Type	2015	2016	# diff.	% diff.	2015	2016	# diff.	% diff.	2015	2016	% pt. diff.
Drug Offences	3164	2837	-327	-10.3	3055	2600	-455	-14.9	96.6	91.6	-4.9
- Trafficking of Drugs	603	586	-17	-2.8	527	457	-70	-13.3	87.4	78.0	-9.4
- Possession of Drugs	2561	2251	-310	-12.1	2528	2143	-385	-15.2	98.7	95.2	-3.5
Possession of Weapons	935	1110	175	18.7	711	890	179	25.2	76.0	80.2	4.1
Public Order	4282	7062	2780	64.9	1651	2014	363	22.0	38.6	28.5	-10.0
Miscellaneous Crimes against Society	1444	1847	403	27.9	616	671	55	8.9	42.7	36.3	-6.3

Corporate Services: Performance Summary
Essex Police Performance Summary

Chelmsford
Cumulative Year to August

Top Level	Offences				Outcomes				Solved Rates %		
Crime Type	2015	2016	# diff.	% diff.	2015	2016	# diff.	% diff.	2015	2016	% pt. diff.
Anti-Social Behaviour (incidents)	1933	1874	-59	-3.1	-	-	-	-	-	-	-
All Crime (excl. Action (NFIB) Fraud)	4073	4749	676	16.6	915	903	-12	-1.3	22.5	19.0	-3.5
- State Based Crime	441	574	133	30.2	210	251	41	19.5	47.6	43.7	-3.9
- Victim Based Crime	3632	4175	543	15.0	705	652	-53	-7.5	19.4	15.6	-3.8
Victim Based Crime	Offences				Outcomes				Solved Rates %		
Crime Type	2015	2016	# diff.	% diff.	2015	2016	# diff.	% diff.	2015	2016	% pt. diff.
Violence Against the Person	1068	1241	173	16.2	280	241	-39	-13.9	26.2	19.4	-6.8
- Homicide	1	4	3	300.0	1	2	1	100.0	100.0	50.0	-50.0
- Violence with Injury	454	458	4	0.9	134	105	-29	-21.6	29.5	22.9	-6.6
- Violence without Injury	613	779	166	27.1	145	134	-11	-7.6	23.7	17.2	-6.5
Sexual Offences	84	138	54	64.3	15	11	-4	-26.7	17.9	8.0	-9.9
- Rape	35	47	12	34.3	8	2	-6	-75.0	22.9	4.3	-18.6
- Rape - Under 16 yrs	7	15	8	114.3	3	1	-2	-66.7	42.9	6.7	-36.2
- Rape - Over 16 yrs	28	32	4	14.3	5	1	-4	-80.0	17.9	3.1	-14.7
- Other Sexual Offences	49	91	42	85.7	7	9	2	28.6	14.3	9.9	-4.4
Robbery	19	22	3	15.8	6	2	-4	-66.7	31.6	9.1	-22.5
- Robbery of business property	1	1	0	0.0	0	0	0	-	0.0	0.0	0.0
- Robbery of Personal Property	18	21	3	16.7	6	2	-4	-66.7	33.3	9.5	-23.8
Theft Offences	1960	2253	293	14.9	327	333	6	1.8	16.7	14.8	-1.9
- Burglary	370	503	133	35.9	17	10	-7	-41.2	4.6	2.0	-2.6
- Dwelling Burglary	165	232	67	40.6	12	5	-7	-58.3	7.3	2.2	-5.1
- Other Burglary	205	271	66	32.2	5	5	0	0.0	2.4	1.8	-0.6
- Vehicle Offences (incl. Interference)	364	434	70	19.2	7	10	3	42.9	1.9	2.3	0.4
- Theft from Vehicle	222	297	75	33.8	1	2	1	100.0	0.5	0.7	0.2
- Theft of Motor Vehicle	97	108	11	11.3	6	7	1	16.7	6.2	6.5	0.3
- Vehicle Interference	45	29	-16	-35.6	0	1	1	-	0.0	3.4	3.4
- Theft	1226	1316	90	7.3	303	313	10	3.3	24.7	23.8	-0.9
- Theft from the Person	97	107	10	10.3	5	1	-4	-80.0	5.2	0.9	-4.2
- Theft of Pedal Cycle	158	167	9	5.7	5	6	1	20.0	3.2	3.6	0.4
- Shoplifting	463	480	17	3.7	262	281	19	7.3	56.6	58.5	2.0
- Other Theft	508	562	54	10.6	31	25	-6	-19.4	6.1	4.4	-1.7
Criminal Damage inc. Arson	501	521	20	4.0	77	65	-12	-15.6	15.4	12.5	-2.9
- Criminal Damage	479	500	21	4.4	76	65	-11	-14.5	15.9	13.0	-2.9
- Arson	22	21	-1	-4.5	1	0	-1	-100.0	4.5	0.0	-4.5
Racial/Religiously Aggravated Offences	23	49	26	113.0	5	9	4	80.0	21.7	18.4	-3.4
State Based Crime	Offences				Outcomes				Solved Rates %		
Crime Type	2015	2016	# diff.	% diff.	2015	2016	# diff.	% diff.	2015	2016	% pt. diff.
Drug Offences	172	160	-12	-7.0	141	138	-3	-2.1	82.0	86.3	4.3
- Trafficking of Drugs	30	28	-2	-6.7	20	19	-1	-5.0	66.7	67.9	1.2
- Possession of Drugs	142	132	-10	-7.0	121	119	-2	-1.7	85.2	90.2	4.9
Possession of Weapons	30	34	4	13.3	17	22	5	29.4	56.7	64.7	8.0
Public Order	178	261	83	46.6	36	53	17	47.2	20.2	20.3	0.1
Miscellaneous Crimes against Society	61	119	58	95.1	16	38	22	137.5	26.2	31.9	5.7

Corporate Services: Performance Summary
Essex Police Performance Summary

Chelmsford
Rolling 12 Months to August

Top Level	Offences				Outcomes				Solved Rates %		
Crime Type	2015	2016	# diff.	% diff.	2015	2016	# diff.	% diff.	2015	2016	% pt. diff.
Anti-Social Behaviour (incidents)	4475	4181	-294	-6.6	-	-	-	-	-	-	-
All Crime (excl. Action (NFIB) Fraud)	9069	10364	1295	14.3	2453	2277	-176	-7.2	27.0	22.0	-5.1
- State Based Crime	962	1188	226	23.5	621	567	-54	-8.7	64.6	47.7	-16.8
- Victim Based Crime	8107	9176	1069	13.2	1832	1710	-122	-6.7	22.6	18.6	-4.0
Victim Based Crime	Offences				Outcomes				Solved Rates %		
Crime Type	2015	2016	# diff.	% diff.	2015	2016	# diff.	% diff.	2015	2016	% pt. diff.
Violence Against the Person	2290	2812	522	22.8	787	634	-153	-19.4	34.4	22.5	-11.8
- Homicide	3	5	2	66.7	3	2	-1	-33.3	100.0	40.0	-60.0
- Violence with Injury	1010	1066	56	5.5	366	288	-78	-21.3	36.2	27.0	-9.2
- Violence without Injury	1277	1741	464	36.3	418	344	-74	-17.7	32.7	19.8	-13.0
Sexual Offences	231	285	54	23.4	28	37	9	32.1	12.1	13.0	0.9
- Rape	92	106	14	15.2	11	11	0	0.0	12.0	10.4	-1.6
- Rape - Under 16 yrs	24	33	9	37.5	4	4	0	0.0	16.7	12.1	-4.5
- Rape - Over 16 yrs	68	73	5	7.4	7	7	0	0.0	10.3	9.6	-0.7
- Other Sexual Offences	139	179	40	28.8	17	26	9	52.9	12.2	14.5	2.3
Robbery	48	66	18	37.5	17	9	-8	-47.1	35.4	13.6	-21.8
- Robbery of business property	5	7	2	40.0	1	2	1	100.0	20.0	28.6	8.6
- Robbery of Personal Property	43	59	16	37.2	16	7	-9	-56.3	37.2	11.9	-25.3
Theft Offences	4392	4862	470	10.7	800	860	60	7.5	18.2	17.7	-0.5
- Burglary	951	1080	129	13.6	58	34	-24	-41.4	6.1	3.1	-3.0
- Dwelling Burglary	419	454	35	8.4	34	20	-14	-41.2	8.1	4.4	-3.7
- Other Burglary	532	626	94	17.7	24	14	-10	-41.7	4.5	2.2	-2.3
- Vehicle Offences (incl. Interference)	811	874	63	7.8	23	32	9	39.1	2.8	3.7	0.8
- Theft from Vehicle	532	536	4	0.8	5	15	10	200.0	0.9	2.8	1.9
- Theft of Motor Vehicle	186	273	87	46.8	18	15	-3	-16.7	9.7	5.5	-4.2
- Vehicle Interference	93	65	-28	-30.1	0	2	2	-	0.0	3.1	3.1
- Theft	2630	2908	278	10.6	719	794	75	10.4	27.3	27.3	0.0
- Theft from the Person	180	220	40	22.2	9	5	-4	-44.4	5.0	2.3	-2.7
- Theft of Pedal Cycle	354	325	-29	-8.2	13	10	-3	-23.1	3.7	3.1	-0.6
- Shoplifting	974	1206	232	23.8	584	707	123	21.1	60.0	58.6	-1.3
- Other Theft	1122	1157	35	3.1	113	72	-41	-36.3	10.1	6.2	-3.8
Criminal Damage inc. Arson	1146	1151	5	0.4	200	170	-30	-15.0	17.5	14.8	-2.7
- Criminal Damage	1105	1101	-4	-0.4	194	169	-25	-12.9	17.6	15.3	-2.2
- Arson	41	50	9	22.0	6	1	-5	-83.3	14.6	2.0	-12.6
Racial/Religiously Aggravated Offences	69	79	10	14.5	23	15	-8	-34.8	33.3	19.0	-14.3
State Based Crime	Offences				Outcomes				Solved Rates %		
Crime Type	2015	2016	# diff.	% diff.	2015	2016	# diff.	% diff.	2015	2016	% pt. diff.
Drug Offences	395	308	-87	-22.0	373	292	-81	-21.7	94.4	94.8	0.4
- Trafficking of Drugs	64	51	-13	-20.3	40	43	3	7.5	62.5	84.3	21.8
- Possession of Drugs	331	257	-74	-22.4	333	249	-84	-25.2	100.6	96.9	-3.7
Possession of Weapons	57	66	9	15.8	42	48	6	14.3	73.7	72.7	-1.0
Public Order	367	576	209	56.9	137	131	-6	-4.4	37.3	22.7	-14.6
Miscellaneous Crimes against Society	143	238	95	66.4	69	96	27	39.1	48.3	40.3	-7.9

Corporate Services: Performance Summary
Essex Police Performance Summary

Braintree
Cumulative Year to July

Top Level	Offences				Outcomes				Solved Rates %		
Crime Type	2015	2016	# diff.	% diff.	2015	2016	# diff.	% diff.	2015	2016	% pt. diff.
Anti-Social Behaviour (incidents)	1292	1216	-76	-5.9	-	-	-	-	-	-	-
All Crime (excl. Action (NFIB) Fraud)	2291	2587	296	12.9	421	470	49	11.6	18.4	18.2	-0.2
- State Based Crime	189	314	125	66.1	91	132	41	45.1	48.1	42.0	-6.1
- Victim Based Crime	2102	2273	171	8.1	330	338	8	2.4	15.7	14.9	-0.8
Victim Based Crime	Offences				Outcomes				Solved Rates %		
Crime Type	2015	2016	# diff.	% diff.	2015	2016	# diff.	% diff.	2015	2016	% pt. diff.
Violence Against the Person	612	749	137	22.4	180	179	-1	-0.6	29.4	23.9	-5.5
- Homicide	0	0	0	-	0	0	0	-	-	-	-
- Violence with Injury	241	333	92	38.2	77	84	7	9.1	32.0	25.2	-6.7
- Violence without Injury	371	416	45	12.1	103	95	-8	-7.8	27.8	22.8	-4.9
Sexual Offences	67	88	21	31.3	11	8	-3	-27.3	16.4	9.1	-7.3
- Rape	21	31	10	47.6	3	0	-3	-100.0	14.3	0.0	-14.3
- Rape - Under 16 yrs	11	9	-2	-18.2	3	0	-3	-100.0	27.3	0.0	-27.3
- Rape - Over 16 yrs	10	22	12	120.0	0	0	0	-	0.0	0.0	0.0
- Other Sexual Offences	46	57	11	23.9	8	8	0	0.0	17.4	14.0	-3.4
Robbery	8	11	3	37.5	3	5	2	66.7	37.5	45.5	8.0
- Robbery of business property	0	0	0	-	2	3	1	50.0	-	-	-
- Robbery of Personal Property	8	11	3	37.5	1	2	1	100.0	12.5	18.2	5.7
Theft Offences	1044	1089	45	4.3	97	86	-11	-11.3	9.3	7.9	-1.4
- Burglary	305	408	103	33.8	11	11	0	0.0	3.6	2.7	-0.9
- Dwelling Burglary	128	248	120	93.8	7	8	1	14.3	5.5	3.2	-2.2
- Other Burglary	177	160	-17	-9.6	4	3	-1	-25.0	2.3	1.9	-0.4
- Vehicle Offences (incl. Interference)	225	214	-11	-4.9	4	2	-2	-50.0	1.8	0.9	-0.8
- Theft from Vehicle	174	138	-36	-20.7	3	0	-3	-100.0	1.7	0.0	-1.7
- Theft of Motor Vehicle	25	60	35	140.0	1	2	1	100.0	4.0	3.3	-0.7
- Vehicle Interference	26	16	-10	-38.5	0	0	0	-	0.0	0.0	0.0
- Theft	514	467	-47	-9.1	82	73	-9	-11.0	16.0	15.6	-0.3
- Theft from the Person	26	25	-1	-3.8	0	2	2	-	0.0	8.0	8.0
- Theft of Pedal Cycle	58	48	-10	-17.2	2	1	-1	-50.0	3.4	2.1	-1.4
- Shoplifting	126	140	14	11.1	58	59	1	1.7	46.0	42.1	-3.9
- Other Theft	304	254	-50	-16.4	22	11	-11	-50.0	7.2	4.3	-2.9
Criminal Damage inc. Arson	371	336	-35	-9.4	39	60	21	53.8	10.5	17.9	7.3
- Criminal Damage	359	325	-34	-9.5	39	58	19	48.7	10.9	17.8	7.0
- Arson	12	11	-1	-8.3	0	2	2	-	0.0	18.2	18.2
Racial/Religiously Aggravated Offences	7	15	8	114.3	1	3	2	200.0	14.3	20.0	5.7
State Based Crime	Offences				Outcomes				Solved Rates %		
Crime Type	2015	2016	# diff.	% diff.	2015	2016	# diff.	% diff.	2015	2016	% pt. diff.
Drug Offences	54	63	9	16.7	48	53	5	10.4	88.9	84.1	-4.8
- Trafficking of Drugs	5	12	7	140.0	4	9	5	125.0	80.0	75.0	-5.0
- Possession of Drugs	49	51	2	4.1	44	44	0	0.0	89.8	86.3	-3.5
Possession of Weapons	11	20	9	81.8	7	11	4	57.1	63.6	55.0	-8.6
Public Order	94	185	91	96.8	32	54	22	68.8	34.0	29.2	-4.9
Miscellaneous Crimes against Society	30	46	16	53.3	4	14	10	250.0	13.3	30.4	17.1

Corporate Services: Performance Summary
Essex Police Performance Summary

Braintree

Rolling 12 Months to August

Top Level	Offences				Outcomes				Solved Rates %		
Crime Type	2015	2016	# diff.	% diff.	2015	2016	# diff.	% diff.	2015	2016	% pt. diff.
Anti-Social Behaviour (incidents)	3684	3287	-397	-10.8	-	-	-	-	-	-	-
All Crime (excl. Action (NFIB) Fraud)	6251	7231	980	15.7	1507	1427	-80	-5.3	24.1	19.7	-4.4
- State Based Crime	578	777	199	34.4	351	357	6	1.7	60.7	45.9	-14.8
- Victim Based Crime	5673	6454	781	13.8	1156	1070	-86	-7.4	20.4	16.6	-3.8
Victim Based Crime	Offences				Outcomes				Solved Rates %		
Crime Type	2015	2016	# diff.	% diff.	2015	2016	# diff.	% diff.	2015	2016	% pt. diff.
Violence Against the Person	1589	2038	449	28.3	593	536	-57	-9.6	37.3	26.3	-11.0
- Homicide	0	1	1	-	0	0	0	-	-	0.0	-
- Violence with Injury	676	849	173	25.6	262	267	5	1.9	38.8	31.4	-7.3
- Violence without Injury	913	1188	275	30.1	331	269	-62	-18.7	36.3	22.6	-13.6
Sexual Offences	174	303	129	74.1	28	56	28	100.0	16.1	18.5	2.4
- Rape	57	78	21	36.8	8	6	-2	-25.0	14.0	7.7	-6.3
- Rape - Under 16 yrs	25	29	4	16.0	8	5	-3	-37.5	32.0	17.2	-14.8
- Rape - Over 16 yrs	32	49	17	53.1	0	1	1	-	0.0	2.0	2.0
- Other Sexual Offences	117	225	108	92.3	20	50	30	150.0	17.1	22.2	5.1
Robbery	31	45	14	45.2	6	10	4	66.7	19.4	22.2	2.9
- Robbery of business property	6	8	2	33.3	4	7	3	75.0	66.7	87.5	20.8
- Robbery of Personal Property	25	37	12	48.0	2	3	1	50.0	8.0	8.1	0.1
Theft Offences	2886	3039	153	5.3	382	320	-62	-16.2	13.2	10.5	-2.7
- Burglary	773	1016	243	31.4	54	45	-9	-16.7	7.0	4.4	-2.6
- Dwelling Burglary	302	507	205	67.9	45	24	-21	-46.7	14.9	4.7	-10.2
- Other Burglary	471	509	38	8.1	9	21	12	133.3	1.9	4.1	2.2
- Vehicle Offences (incl. Interference)	621	567	-54	-8.7	17	20	3	17.6	2.7	3.5	0.8
- Theft from Vehicle	453	356	-97	-21.4	10	5	-5	-50.0	2.2	1.4	-0.8
- Theft of Motor Vehicle	102	155	53	52.0	6	14	8	133.3	5.9	9.0	3.1
- Vehicle Interference	66	56	-10	-15.2	1	1	0	0.0	1.5	1.8	0.3
- Theft	1492	1456	-36	-2.4	311	255	-56	-18.0	20.8	17.5	-3.3
- Theft from the Person	78	84	6	7.7	3	4	1	33.3	3.8	4.8	0.9
- Theft of Pedal Cycle	159	153	-6	-3.8	7	4	-3	-42.9	4.4	2.6	-1.8
- Shoplifting	407	477	70	17.2	194	192	-2	-1.0	47.7	40.3	-7.4
- Other Theft	848	742	-106	-12.5	107	55	-52	-48.6	12.6	7.4	-5.2
Criminal Damage inc. Arson	993	1029	36	3.6	147	148	1	0.7	14.8	14.4	-0.4
- Criminal Damage	964	999	35	3.6	141	145	4	2.8	14.6	14.5	-0.1
- Arson	29	30	1	3.4	6	3	-3	-50.0	20.7	10.0	-10.7
Racial/Religiously Aggravated Offences	30	40	10	33.3	9	12	3	33.3	30.0	30.0	0.0
State Based Crime	Offences				Outcomes				Solved Rates %		
Crime Type	2015	2016	# diff.	% diff.	2015	2016	# diff.	% diff.	2015	2016	% pt. diff.
Drug Offences	205	165	-40	-19.5	199	147	-52	-26.1	97.1	89.1	-8.0
- Trafficking of Drugs	19	33	14	73.7	15	21	6	40.0	78.9	63.6	-15.3
- Possession of Drugs	186	132	-54	-29.0	184	126	-58	-31.5	98.9	95.5	-3.5
Possession of Weapons	27	43	16	59.3	18	26	8	44.4	66.7	60.5	-6.2
Public Order	262	457	195	74.4	103	142	39	37.9	39.3	31.1	-8.2
Miscellaneous Crimes against Society	84	112	28	33.3	31	42	11	35.5	36.9	37.5	0.6

Corporate Services: Performance Summary
Essex Police Performance Summary

Uttlesford
Cumulative Year to August

Top Level	Offences				Outcomes				Solved Rates %		
Crime Type	2015	2016	# diff.	% diff.	2015	2016	# diff.	% diff.	2015	2016	% pt. diff.
Anti-Social Behaviour (incidents)	566	490	-76	-13.4	-	-	-	-	-	-	-
All Crime (excl. Action (NFIB) Fraud)	1074	1132	58	5.4	185	158	-27	-14.6	17.2	14.0	-3.3
- State Based Crime	76	126	50	65.8	47	40	-7	-14.9	61.8	31.7	-30.1
- Victim Based Crime	998	1006	8	0.8	138	118	-20	-14.5	13.8	11.7	-2.1
Victim Based Crime	Offences				Outcomes				Solved Rates %		
Crime Type	2015	2016	# diff.	% diff.	2015	2016	# diff.	% diff.	2015	2016	% pt. diff.
Violence Against the Person	232	291	59	25.4	69	52	-17	-24.6	29.7	17.9	-11.9
- Homicide	3	0	-3	-100.0	1	0	-1	-100.0	33.3	-	-
- Violence with Injury	100	109	9	9.0	40	29	-11	-27.5	40.0	26.6	-13.4
- Violence without Injury	129	182	53	41.1	28	23	-5	-17.9	21.7	12.6	-9.1
Sexual Offences	27	35	8	29.6	6	0	-6	-100.0	22.2	0.0	-22.2
- Rape	11	15	4	36.4	1	0	-1	-100.0	9.1	0.0	-9.1
- Rape - Under 16 yrs	6	3	-3	-50.0	0	0	0	-	0.0	0.0	0.0
- Rape - Over 16 yrs	5	12	7	140.0	1	0	-1	-100.0	20.0	0.0	-20.0
- Other Sexual Offences	16	20	4	25.0	5	0	-5	-100.0	31.3	0.0	-31.3
Robbery	3	3	0	0.0	3	0	-3	-100.0	100.0	0.0	-100.0
- Robbery of business property	0	1	1	-	0	0	0	-	-	0.0	-
- Robbery of Personal Property	3	2	-1	-33.3	3	0	-3	-100.0	100.0	0.0	-100.0
Theft Offences	590	510	-80	-13.6	47	49	2	4.3	8.0	9.6	1.6
- Burglary	189	152	-37	-19.6	17	3	-14	-82.4	9.0	2.0	-7.0
- Dwelling Burglary	66	56	-10	-15.2	7	3	-4	-57.1	10.6	5.4	-5.2
- Other Burglary	123	96	-27	-22.0	10	0	-10	-100.0	8.1	0.0	-8.1
- Vehicle Offences (incl. Interference)	157	117	-40	-25.5	9	4	-5	-55.6	5.7	3.4	-2.3
- Theft from Vehicle	115	88	-27	-23.5	7	3	-4	-57.1	6.1	3.4	-2.7
- Theft of Motor Vehicle	21	19	-2	-9.5	2	1	-1	-50.0	9.5	5.3	-4.3
- Vehicle Interference	21	10	-11	-52.4	0	0	0	-	0.0	0.0	0.0
- Theft	244	241	-3	-1.2	21	42	21	100.0	8.6	17.4	8.8
- Theft from the Person	19	10	-9	-47.4	1	1	0	0.0	5.3	10.0	4.7
- Theft of Pedal Cycle	8	12	4	50.0	0	0	0	-	0.0	0.0	0.0
- Shoplifting	31	49	18	58.1	10	25	15	150.0	32.3	51.0	18.8
- Other Theft	186	170	-16	-8.6	10	16	6	60.0	5.4	9.4	4.0
Criminal Damage inc. Arson	146	167	21	14.4	13	17	4	30.8	8.9	10.2	1.3
- Criminal Damage	136	162	26	19.1	13	17	4	30.8	9.6	10.5	0.9
- Arson	10	5	-5	-50.0	0	0	0	-	0.0	0.0	0.0
Racial/Religiously Aggravated Offences	3	10	7	233.3	1	0	-1	-100.0	33.3	0.0	-33.3
State Based Crime	Offences				Outcomes				Solved Rates %		
Crime Type	2015	2016	# diff.	% diff.	2015	2016	# diff.	% diff.	2015	2016	% pt. diff.
Drug Offences	18	26	8	44.4	18	22	4	22.2	100.0	84.6	-15.4
- Trafficking of Drugs	2	2	0	0.0	1	1	0	0.0	50.0	50.0	0.0
- Possession of Drugs	16	24	8	50.0	17	21	4	23.5	106.3	87.5	-18.8
Possession of Weapons	8	8	0	0.0	7	4	-3	-42.9	87.5	50.0	-37.5
Public Order	41	65	24	58.5	18	10	-8	-44.4	43.9	15.4	-28.5
Miscellaneous Crimes against Society	9	27	18	200.0	4	4	0	0.0	44.4	14.8	-29.6

Corporate Services: Performance Summary
Essex Police Performance Summary

Uttlesford
Rolling 12 Months to August

Top Level	Offences				Outcomes				Solved Rates %		
Crime Type	2015	2016	# diff.	% diff.	2015	2016	# diff.	% diff.	2015	2016	% pt. diff.
Anti-Social Behaviour (incidents)	1312	1102	-210	-16.0	-	-	-	-	-	-	-
All Crime (excl. Action (NFIB) Fraud)	2552	2546	-6	-0.2	499	420	-79	-15.8	19.6	16.5	-3.1
- State Based Crime	171	231	60	35.1	110	82	-28	-25.5	64.3	35.5	-28.8
- Victim Based Crime	2381	2315	-66	-2.8	389	338	-51	-13.1	16.3	14.6	-1.7
Victim Based Crime	Offences				Outcomes				Solved Rates %		
Crime Type	2015	2016	# diff.	% diff.	2015	2016	# diff.	% diff.	2015	2016	% pt. diff.
Violence Against the Person	519	660	141	27.2	188	172	-16	-8.5	36.2	26.1	-10.2
- Homicide	3	0	-3	-100.0	1	0	-1	-100.0	33.3	-	-
- Violence with Injury	236	262	26	11.0	103	88	-15	-14.6	43.6	33.6	-10.1
- Violence without Injury	280	398	118	42.1	84	84	0	0.0	30.0	21.1	-8.9
Sexual Offences	72	73	1	1.4	14	4	-10	-71.4	19.4	5.5	-14.0
- Rape	27	38	11	40.7	4	2	-2	-50.0	14.8	5.3	-9.6
- Rape - Under 16 yrs	15	14	-1	-6.7	1	1	0	0.0	6.7	7.1	0.5
- Rape - Over 16 yrs	12	24	12	100.0	3	1	-2	-66.7	25.0	4.2	-20.8
- Other Sexual Offences	45	35	-10	-22.2	10	2	-8	-80.0	22.2	5.7	-16.5
Robbery	8	8	0	0.0	3	0	-3	-100.0	37.5	0.0	-37.5
- Robbery of business property	0	2	2	-	0	0	0	-	-	0.0	-
- Robbery of Personal Property	8	6	-2	-25.0	3	0	-3	-100.0	37.5	0.0	-37.5
Theft Offences	1402	1176	-226	-16.1	136	119	-17	-12.5	9.7	10.1	0.4
- Burglary	496	374	-122	-24.6	41	12	-29	-70.7	8.3	3.2	-5.1
- Dwelling Burglary	144	143	-1	-0.7	26	7	-19	-73.1	18.1	4.9	-13.2
- Other Burglary	352	231	-121	-34.4	15	5	-10	-66.7	4.3	2.2	-2.1
- Vehicle Offences (incl. Interference)	369	279	-90	-24.4	17	12	-5	-29.4	4.6	4.3	-0.3
- Theft from Vehicle	270	202	-68	-25.2	7	4	-3	-42.9	2.6	2.0	-0.6
- Theft of Motor Vehicle	57	57	0	0.0	10	8	-2	-20.0	17.5	14.0	-3.5
- Vehicle Interference	42	20	-22	-52.4	0	0	0	-	0.0	0.0	0.0
- Theft	537	523	-14	-2.6	78	95	17	21.8	14.5	18.2	3.6
- Theft from the Person	27	27	0	0.0	1	1	0	0.0	3.7	3.7	0.0
- Theft of Pedal Cycle	20	22	2	10.0	0	1	1	-	0.0	4.5	4.5
- Shoplifting	93	112	19	20.4	34	48	14	41.2	36.6	42.9	6.3
- Other Theft	397	362	-35	-8.8	43	45	2	4.7	10.8	12.4	1.6
Criminal Damage inc. Arson	380	398	18	4.7	48	43	-5	-10.4	12.6	10.8	-1.8
- Criminal Damage	362	386	24	6.6	47	42	-5	-10.6	13.0	10.9	-2.1
- Arson	18	12	-6	-33.3	1	1	0	0.0	5.6	8.3	2.8
Racial/Religiously Aggravated Offences	10	17	7	70.0	3	1	-2	-66.7	30.0	5.9	-24.1
State Based Crime	Offences				Outcomes				Solved Rates %		
Crime Type	2015	2016	# diff.	% diff.	2015	2016	# diff.	% diff.	2015	2016	% pt. diff.
Drug Offences	51	52	1	2.0	50	48	-2	-4.0	98.0	92.3	-5.7
- Trafficking of Drugs	7	7	0	0.0	6	7	1	16.7	85.7	100.0	14.3
- Possession of Drugs	44	45	1	2.3	44	41	-3	-6.8	100.0	91.1	-8.9
Possession of Weapons	18	12	-6	-33.3	13	9	-4	-30.8	72.2	75.0	2.8
Public Order	73	121	48	65.8	36	16	-20	-55.6	49.3	13.2	-36.1
Miscellaneous Crimes against Society	29	46	17	58.6	11	9	-2	-18.2	37.9	19.6	-18.4

Corporate Services: Performance Summary

Essex Police Performance Summary

Maldon

Cumulative Year to August

Top Level	Offences				Outcomes				Solved Rates %		
Crime Type	2015	2016	# diff.	% diff.	2015	2016	# diff.	% diff.	2015	2016	% pt. diff.
Anti-Social Behaviour (incidents)	520	470	-50	-9.6	-	-	-	-	-	-	-
All Crime (excl. Action (NFIB) Fraud)	969	1079	110	11.4	160	156	-4	-2.5	16.5	14.5	-2.1
- State Based Crime	104	112	8	7.7	55	42	-13	-23.6	52.9	37.5	-15.4
- Victim Based Crime	865	967	102	11.8	105	114	9	8.6	12.1	11.8	-0.3
Victim Based Crime	Offences				Outcomes				Solved Rates %		
Crime Type	2015	2016	# diff.	% diff.	2015	2016	# diff.	% diff.	2015	2016	% pt. diff.
Violence Against the Person	271	305	34	12.5	69	73	4	5.8	25.5	23.9	-1.5
- Homicide	1	0	-1	-100.0	1	0	-1	-100.0	100.0	-	-
- Violence with Injury	111	124	13	11.7	40	40	0	0.0	36.0	32.3	-3.8
- Violence without Injury	159	181	22	13.8	28	33	5	17.9	17.6	18.2	0.6
Sexual Offences	31	25	-6	-19.4	1	5	4	400.0	3.2	20.0	16.8
- Rape	23	7	-16	-69.6	0	3	3	-	0.0	42.9	42.9
- Rape - Under 16 yrs	16	4	-12	-75.0	0	3	3	-	0.0	75.0	75.0
- Rape - Over 16 yrs	7	3	-4	-57.1	0	0	0	-	0.0	0.0	0.0
- Other Sexual Offences	8	18	10	125.0	1	2	1	100.0	12.5	11.1	-1.4
Robbery	5	1	-4	-80.0	2	0	-2	-100.0	40.0	0.0	-40.0
- Robbery of business property	0	0	0	-	0	0	0	-	-	-	-
- Robbery of Personal Property	5	1	-4	-80.0	2	0	-2	-100.0	40.0	0.0	-40.0
Theft Offences	439	460	21	4.8	23	20	-3	-13.0	5.2	4.3	-0.9
- Burglary	151	172	21	13.9	1	2	1	100.0	0.7	1.2	0.5
- Dwelling Burglary	37	59	22	59.5	1	1	0	0.0	2.7	1.7	-1.0
- Other Burglary	114	113	-1	-0.9	0	1	1	-	0.0	0.9	0.9
- Vehicle Offences (incl. Interference)	102	108	6	5.9	4	4	0	0.0	3.9	3.7	-0.2
- Theft from Vehicle	70	65	-5	-7.1	2	1	-1	-50.0	2.9	1.5	-1.3
- Theft of Motor Vehicle	24	30	6	25.0	2	1	-1	-50.0	8.3	3.3	-5.0
- Vehicle Interference	8	13	5	62.5	0	2	2	-	0.0	15.4	15.4
- Theft	186	180	-6	-3.2	18	14	-4	-22.2	9.7	7.8	-1.9
- Theft from the Person	19	14	-5	-26.3	0	0	0	-	0.0	0.0	0.0
- Theft of Pedal Cycle	5	8	3	60.0	0	0	0	-	0.0	0.0	0.0
- Shoplifting	31	27	-4	-12.9	8	10	2	25.0	25.8	37.0	11.2
- Other Theft	131	131	0	0.0	10	4	-6	-60.0	7.6	3.1	-4.6
Criminal Damage inc. Arson	119	176	57	47.9	10	16	6	60.0	8.4	9.1	0.7
- Criminal Damage	116	172	56	48.3	9	15	6	66.7	7.8	8.7	1.0
- Arson	3	4	1	33.3	1	1	0	0.0	33.3	25.0	-8.3
Racial/Religiously Aggravated Offences	4	4	0	0.0	0	0	0	-	0.0	0.0	0.0
State Based Crime	Offences				Outcomes				Solved Rates %		
Crime Type	2015	2016	# diff.	% diff.	2015	2016	# diff.	% diff.	2015	2016	% pt. diff.
Drug Offences	34	22	-12	-35.3	29	14	-15	-51.7	85.3	63.6	-21.7
- Trafficking of Drugs	10	7	-3	-30.0	8	0	-8	-100.0	80.0	0.0	-80.0
- Possession of Drugs	24	15	-9	-37.5	21	14	-7	-33.3	87.5	93.3	5.8
Possession of Weapons	7	4	-3	-42.9	4	3	-1	-25.0	57.1	75.0	17.9
Public Order	51	70	19	37.3	17	21	4	23.5	33.3	30.0	-3.3
Miscellaneous Crimes against Society	12	16	4	33.3	5	4	-1	-20.0	41.7	25.0	-16.7

Corporate Services: Performance Summary
Essex Police Performance Summary

Maldon

Rolling 12 Months to August

Top Level	Offences				Outcomes				Solved Rates %		
Crime Type	2015	2016	# diff.	% diff.	2015	2016	# diff.	% diff.	2015	2016	% pt. diff.
Anti-Social Behaviour (incidents)	1138	1045	-93	-8.2	-	-	-	-	-	-	-
All Crime (excl. Action (NFIB) Fraud)	2285	2444	159	7.0	482	385	-97	-20.1	21.1	15.8	-5.3
- State Based Crime	221	209	-12	-5.4	137	91	-46	-33.6	62.0	43.5	-18.5
- Victim Based Crime	2064	2235	171	8.3	345	294	-51	-14.8	16.7	13.2	-3.6
Victim Based Crime	Offences				Outcomes				Solved Rates %		
Crime Type	2015	2016	# diff.	% diff.	2015	2016	# diff.	% diff.	2015	2016	% pt. diff.
Violence Against the Person	594	726	132	22.2	191	186	-5	-2.6	32.2	25.6	-6.5
- Homicide	1	1	0	0.0	1	1	0	0.0	100.0	100.0	0.0
- Violence with Injury	254	305	51	20.1	99	96	-3	-3.0	39.0	31.5	-7.5
- Violence without Injury	339	420	81	23.9	91	89	-2	-2.2	26.8	21.2	-5.7
Sexual Offences	72	67	-5	-6.9	8	13	5	62.5	11.1	19.4	8.3
- Rape	41	19	-22	-53.7	1	3	2	200.0	2.4	15.8	13.4
- Rape - Under 16 yrs	23	10	-13	-56.5	1	3	2	200.0	4.3	30.0	25.7
- Rape - Over 16 yrs	18	9	-9	-50.0	0	0	0	-	0.0	0.0	0.0
- Other Sexual Offences	31	48	17	54.8	7	10	3	42.9	22.6	20.8	-1.7
Robbery	13	7	-6	-46.2	10	1	-9	-90.0	76.9	14.3	-62.6
- Robbery of business property	1	2	1	100.0	0	0	0	-	0.0	0.0	0.0
- Robbery of Personal Property	12	5	-7	-58.3	10	1	-9	-90.0	83.3	20.0	-63.3
Theft Offences	1085	1051	-34	-3.1	94	55	-39	-41.5	8.7	5.2	-3.4
- Burglary	342	357	15	4.4	8	5	-3	-37.5	2.3	1.4	-0.9
- Dwelling Burglary	78	136	58	74.4	5	3	-2	-40.0	6.4	2.2	-4.2
- Other Burglary	264	221	-43	-16.3	3	2	-1	-33.3	1.1	0.9	-0.2
- Vehicle Offences (incl. Interference)	283	275	-8	-2.8	14	10	-4	-28.6	4.9	3.6	-1.3
- Theft from Vehicle	179	179	0	0.0	9	4	-5	-55.6	5.0	2.2	-2.8
- Theft of Motor Vehicle	73	62	-11	-15.1	5	4	-1	-20.0	6.8	6.5	-0.4
- Vehicle Interference	31	34	3	9.7	0	2	2	-	0.0	5.9	5.9
- Theft	460	419	-41	-8.9	72	40	-32	-44.4	15.7	9.5	-6.1
- Theft from the Person	38	34	-4	-10.5	0	1	1	-	0.0	2.9	2.9
- Theft of Pedal Cycle	16	18	2	12.5	0	0	0	-	0.0	0.0	0.0
- Shoplifting	97	63	-34	-35.1	48	23	-25	-52.1	49.5	36.5	-13.0
- Other Theft	309	304	-5	-1.6	24	16	-8	-33.3	7.8	5.3	-2.5
Criminal Damage inc. Arson	300	384	84	28.0	42	39	-3	-7.1	14.0	10.2	-3.8
- Criminal Damage	290	374	84	29.0	39	36	-3	-7.7	13.4	9.6	-3.8
- Arson	10	10	0	0.0	3	3	0	0.0	30.0	30.0	0.0
Racial/Religiously Aggravated Offences	11	8	-3	-27.3	3	2	-1	-33.3	27.3	25.0	-2.3
State Based Crime	Offences				Outcomes				Solved Rates %		
Crime Type	2015	2016	# diff.	% diff.	2015	2016	# diff.	% diff.	2015	2016	% pt. diff.
Drug Offences	75	40	-35	-46.7	71	33	-38	-53.5	94.7	82.5	-12.2
- Trafficking of Drugs	21	8	-13	-61.9	16	1	-15	-93.8	76.2	12.5	-63.7
- Possession of Drugs	54	32	-22	-40.7	55	32	-23	-41.8	101.9	100.0	-1.9
Possession of Weapons	13	8	-5	-38.5	10	7	-3	-30.0	76.9	87.5	10.6
Public Order	100	136	36	36.0	43	39	-4	-9.3	43.0	28.7	-14.3
Miscellaneous Crimes against Society	33	25	-8	-24.2	13	12	-1	-7.7	39.4	48.0	8.6

Corporate Services: Performance Summary
Essex Police Performance Summary

Colchester
Cumulative Year to August

Top Level	Offences				Outcomes				Solved Rates %		
Crime Type	2015	2016	# diff.	% diff.	2015	2016	# diff.	% diff.	2015	2016	% pt. diff.
Anti-Social Behaviour (incidents)	2708	2477	-231	-8.5	-	-	-	-	-	-	-
All Crime (excl. Action (NFIB) Fraud)	5131	5274	143	2.8	1026	1099	73	7.1	20.0	20.8	0.8
- State Based Crime	469	577	108	23.0	211	227	16	7.6	45.0	39.3	-5.6
- Victim Based Crime	4662	4697	35	0.8	815	872	57	7.0	17.5	18.6	1.1
Victim Based Crime	Offences				Outcomes				Solved Rates %		
Crime Type	2015	2016	# diff.	% diff.	2015	2016	# diff.	% diff.	2015	2016	% pt. diff.
Violence Against the Person	1440	1687	247	17.2	318	393	75	23.6	22.1	23.3	1.2
- Homicide	0	1	1	-	2	1	-1	-50.0	-	100.0	-
- Violence with Injury	588	650	62	10.5	149	197	48	32.2	25.3	30.3	5.0
- Violence without Injury	852	1036	184	21.6	167	195	28	16.8	19.6	18.8	-0.8
Sexual Offences	142	190	48	33.8	13	40	27	207.7	9.2	21.1	11.9
- Rape	60	57	-3	-5.0	3	10	7	233.3	5.0	17.5	12.5
- Rape - Under 16 yrs	17	15	-2	-11.8	1	9	8	800.0	5.9	60.0	54.1
- Rape - Over 16 yrs	43	42	-1	-2.3	2	1	-1	-50.0	4.7	2.4	-2.3
- Other Sexual Offences	82	133	51	62.2	10	30	20	200.0	12.2	22.6	10.4
Robbery	41	38	-3	-7.3	5	8	3	60.0	12.2	21.1	8.9
- Robbery of business property	2	5	3	150.0	1	3	2	200.0	50.0	60.0	10.0
- Robbery of Personal Property	39	33	-6	-15.4	4	5	1	25.0	10.3	15.2	4.9
Theft Offences	2346	2100	-246	-10.5	375	330	-45	-12.0	16.0	15.7	-0.3
- Burglary	608	407	-201	-33.1	58	28	-30	-51.7	9.5	6.9	-2.7
- Dwelling Burglary	301	203	-98	-32.6	51	18	-33	-64.7	16.9	8.9	-8.1
- Other Burglary	307	204	-103	-33.6	7	10	3	42.9	2.3	4.9	2.6
- Vehicle Offences (incl. Interference)	355	351	-4	-1.1	8	17	9	112.5	2.3	4.8	2.6
- Theft from Vehicle	216	220	4	1.9	3	5	2	66.7	1.4	2.3	0.9
- Theft of Motor Vehicle	103	92	-11	-10.7	5	9	4	80.0	4.9	9.8	4.9
- Vehicle Interference	36	39	3	8.3	0	3	3	-	0.0	7.7	7.7
- Theft	1383	1342	-41	-3.0	309	285	-24	-7.8	22.3	21.2	-1.1
- Theft from the Person	82	64	-18	-22.0	8	2	-6	-75.0	9.8	3.1	-6.6
- Theft of Pedal Cycle	218	120	-98	-45.0	19	3	-16	-84.2	8.7	2.5	-6.2
- Shoplifting	511	559	48	9.4	233	238	5	2.1	45.6	42.6	-3.0
- Other Theft	572	599	27	4.7	49	42	-7	-14.3	8.6	7.0	-1.6
Criminal Damage inc. Arson	693	682	-11	-1.6	104	101	-3	-2.9	15.0	14.8	-0.2
- Criminal Damage	672	669	-3	-0.4	102	99	-3	-2.9	15.2	14.8	-0.4
- Arson	21	13	-8	-38.1	2	2	0	0.0	9.5	15.4	5.9
Racial/Religiously Aggravated Offences	32	64	32	100.0	8	9	1	12.5	25.0	14.1	-10.9
State Based Crime	Offences				Outcomes				Solved Rates %		
Crime Type	2015	2016	# diff.	% diff.	2015	2016	# diff.	% diff.	2015	2016	% pt. diff.
Drug Offences	107	94	-13	-12.1	94	84	-10	-10.6	87.9	89.4	1.5
- Trafficking of Drugs	29	20	-9	-31.0	21	17	-4	-19.0	72.4	85.0	12.6
- Possession of Drugs	78	74	-4	-5.1	73	67	-6	-8.2	93.6	90.5	-3.0
Possession of Weapons	32	23	-9	-28.1	15	16	1	6.7	46.9	69.6	22.7
Public Order	242	358	116	47.9	69	100	31	44.9	28.5	27.9	-0.6
Miscellaneous Crimes against Society	88	102	14	15.9	33	27	-6	-18.2	37.5	26.5	-11.0

Corporate Services: Performance Summary
Essex Police Performance Summary

Colchester
Rolling 12 Months to August

Top Level	Offences				Outcomes				Solved Rates %		
Crime Type	2015	2016	# diff.	% diff.	2015	2016	# diff.	% diff.	2015	2016	% pt. diff.
Anti-Social Behaviour (incidents)	5962	5363	-599	-10.0	-	-	-	-	-	-	-
All Crime (excl. Action (NFIB) Fraud)	11607	12112	505	4.4	2866	2909	43	1.5	24.7	24.0	-0.7
- State Based Crime	998	1356	358	35.9	594	674	80	13.5	59.5	49.7	-9.8
- Victim Based Crime	10609	10756	147	1.4	2272	2235	-37	-1.6	21.4	20.8	-0.6
Victim Based Crime	Offences				Outcomes				Solved Rates %		
Crime Type	2015	2016	# diff.	% diff.	2015	2016	# diff.	% diff.	2015	2016	% pt. diff.
Violence Against the Person	3139	3853	714	22.7	939	1000	61	6.5	29.9	26.0	-4.0
- Homicide	0	1	1	-	2	1	-1	-50.0	-	100.0	-
- Violence with Injury	1330	1460	130	9.8	458	461	3	0.7	34.4	31.6	-2.9
- Violence without Injury	1809	2392	583	32.2	479	538	59	12.3	26.5	22.5	-4.0
Sexual Offences	326	399	73	22.4	33	88	55	166.7	10.1	22.1	11.9
- Rape	127	128	1	0.8	5	21	16	320.0	3.9	16.4	12.5
- Rape - Under 16 yrs	34	37	3	8.8	2	13	11	550.0	5.9	35.1	29.3
- Rape - Over 16 yrs	93	91	-2	-2.2	3	8	5	166.7	3.2	8.8	5.6
- Other Sexual Offences	199	271	72	36.2	28	67	39	139.3	14.1	24.7	10.7
Robbery	89	85	-4	-4.5	21	28	7	33.3	23.6	32.9	9.3
- Robbery of business property	5	7	2	40.0	1	6	5	500.0	20.0	85.7	65.7
- Robbery of Personal Property	84	78	-6	-7.1	20	22	2	10.0	23.8	28.2	4.4
Theft Offences	5388	4784	-604	-11.2	1012	868	-144	-14.2	18.8	18.1	-0.6
- Burglary	1445	937	-508	-35.2	134	70	-64	-47.8	9.3	7.5	-1.8
- Dwelling Burglary	743	472	-271	-36.5	101	50	-51	-50.5	13.6	10.6	-3.0
- Other Burglary	702	465	-237	-33.8	33	20	-13	-39.4	4.7	4.3	-0.4
- Vehicle Offences (incl. Interference)	885	762	-123	-13.9	45	32	-13	-28.9	5.1	4.2	-0.9
- Theft from Vehicle	532	489	-43	-8.1	15	6	-9	-60.0	2.8	1.2	-1.6
- Theft of Motor Vehicle	248	193	-55	-22.2	28	21	-7	-25.0	11.3	10.9	-0.4
- Vehicle Interference	105	80	-25	-23.8	2	5	3	150.0	1.9	6.3	4.3
- Theft	3058	3085	27	0.9	833	766	-67	-8.0	27.2	24.8	-2.4
- Theft from the Person	162	186	24	14.8	8	4	-4	-50.0	4.9	2.2	-2.8
- Theft of Pedal Cycle	402	256	-146	-36.3	29	28	-1	-3.4	7.2	10.9	3.7
- Shoplifting	1164	1298	134	11.5	649	620	-29	-4.5	55.8	47.8	-8.0
- Other Theft	1330	1345	15	1.1	147	114	-33	-22.4	11.1	8.5	-2.6
Criminal Damage inc. Arson	1667	1635	-32	-1.9	267	251	-16	-6.0	16.0	15.4	-0.7
- Criminal Damage	1623	1603	-20	-1.2	261	247	-14	-5.4	16.1	15.4	-0.7
- Arson	44	32	-12	-27.3	6	4	-2	-33.3	13.6	12.5	-1.1
Racial/Religiously Aggravated Offences	81	117	36	44.4	36	30	-6	-16.7	44.4	25.6	-18.8
State Based Crime	Offences				Outcomes				Solved Rates %		
Crime Type	2015	2016	# diff.	% diff.	2015	2016	# diff.	% diff.	2015	2016	% pt. diff.
Drug Offences	296	304	8	2.7	292	285	-7	-2.4	98.6	93.8	-4.9
- Trafficking of Drugs	52	95	43	82.7	44	81	37	84.1	84.6	85.3	0.6
- Possession of Drugs	244	209	-35	-14.3	248	204	-44	-17.7	101.6	97.6	-4.0
Possession of Weapons	59	61	2	3.4	34	42	8	23.5	57.6	68.9	11.2
Public Order	476	786	310	65.1	187	268	81	43.3	39.3	34.1	-5.2
Miscellaneous Crimes against Society	167	205	38	22.8	81	79	-2	-2.5	48.5	38.5	-10.0

Corporate Services: Performance Summary

Essex Police Performance Summary

Tendring

Cumulative Year to August

Top Level	Offences				Outcomes				Solved Rates %		
Crime Type	2015	2016	# diff.	% diff.	2015	2016	# diff.	% diff.	2015	2016	% pt. diff.
Anti-Social Behaviour (incidents)	2313	2200	-113	-4.9	-	-	-	-	-	-	-
All Crime (excl. Action (NFIB) Fraud)	4220	4571	351	8.3	963	1090	127	13.2	22.8	23.8	1.0
- State Based Crime	405	617	212	52.3	183	271	88	48.1	45.2	43.9	-1.3
- Victim Based Crime	3815	3954	139	3.6	780	819	39	5.0	20.4	20.7	0.3
Victim Based Crime	Offences				Outcomes				Solved Rates %		
Crime Type	2015	2016	# diff.	% diff.	2015	2016	# diff.	% diff.	2015	2016	% pt. diff.
Violence Against the Person	1326	1549	223	16.8	367	368	1	0.3	27.7	23.8	-3.9
- Homicide	2	0	-2	-100.0	1	0	-1	-100.0	50.0	-	-
- Violence with Injury	527	632	105	19.9	156	160	4	2.6	29.6	25.3	-4.3
- Violence without Injury	797	917	120	15.1	210	208	-2	-1.0	26.3	22.7	-3.7
Sexual Offences	113	114	1	0.9	17	20	3	17.6	15.0	17.5	2.5
- Rape	38	38	0	0.0	6	5	-1	-16.7	15.8	13.2	-2.6
- Rape - Under 16 yrs	15	15	0	0.0	2	4	2	100.0	13.3	26.7	13.3
- Rape - Over 16 yrs	23	23	0	0.0	4	1	-3	-75.0	17.4	4.3	-13.0
- Other Sexual Offences	75	76	1	1.3	11	15	4	36.4	14.7	19.7	5.1
Robbery	33	51	18	54.5	4	8	4	100.0	12.1	15.7	3.6
- Robbery of business property	3	3	0	0.0	1	1	0	0.0	33.3	33.3	0.0
- Robbery of Personal Property	30	48	18	60.0	3	7	4	133.3	10.0	14.6	4.6
Theft Offences	1777	1621	-156	-8.8	305	333	28	9.2	17.2	20.5	3.4
- Burglary	497	376	-121	-24.3	33	28	-5	-15.2	6.6	7.4	0.8
- Dwelling Burglary	222	185	-37	-16.7	30	20	-10	-33.3	13.5	10.8	-2.7
- Other Burglary	275	191	-84	-30.5	3	8	5	166.7	1.1	4.2	3.1
- Vehicle Offences (incl. Interference)	294	282	-12	-4.1	11	16	5	45.5	3.7	5.7	1.9
- Theft from Vehicle	216	145	-71	-32.9	2	4	2	100.0	0.9	2.8	1.8
- Theft of Motor Vehicle	54	112	58	107.4	6	10	4	66.7	11.1	8.9	-2.2
- Vehicle Interference	24	25	1	4.2	3	2	-1	-33.3	12.5	8.0	-4.5
- Theft	986	963	-23	-2.3	261	289	28	10.7	26.5	30.0	3.5
- Theft from the Person	55	42	-13	-23.6	1	0	-1	-100.0	1.8	0.0	-1.8
- Theft of Pedal Cycle	47	44	-3	-6.4	6	2	-4	-66.7	12.8	4.5	-8.2
- Shoplifting	436	461	25	5.7	223	235	12	5.4	51.1	51.0	-0.2
- Other Theft	448	416	-32	-7.1	31	52	21	67.7	6.9	12.5	5.6
Criminal Damage inc. Arson	566	619	53	9.4	87	90	3	3.4	15.4	14.5	-0.8
- Criminal Damage	546	593	47	8.6	87	89	2	2.3	15.9	15.0	-0.9
- Arson	20	26	6	30.0	0	1	1	-	0.0	3.8	3.8
Racial/Religiously Aggravated Offences	12	34	22	183.3	4	10	6	150.0	33.3	29.4	-3.9
State Based Crime	Offences				Outcomes				Solved Rates %		
Crime Type	2015	2016	# diff.	% diff.	2015	2016	# diff.	% diff.	2015	2016	% pt. diff.
Drug Offences	93	116	23	24.7	85	102	17	20.0	91.4	87.9	-3.5
- Trafficking of Drugs	23	32	9	39.1	22	25	3	13.6	95.7	78.1	-17.5
- Possession of Drugs	70	84	14	20.0	63	77	14	22.2	90.0	91.7	1.7
Possession of Weapons	27	59	32	118.5	14	34	20	142.9	51.9	57.6	5.8
Public Order	208	351	143	68.8	62	111	49	79.0	29.8	31.6	1.8
Miscellaneous Crimes against Society	77	91	14	18.2	22	24	2	9.1	28.6	26.4	-2.2

Corporate Services: Performance Summary
Essex Police Performance Summary

Tendring
Rolling 12 Months to August

Top Level	Offences				Outcomes				Solved Rates %		
Crime Type	2015	2016	# diff.	% diff.	2015	2016	# diff.	% diff.	2015	2016	% pt. diff.
Anti-Social Behaviour (incidents)	4759	4530	-229	-4.8	-	-	-	-	-	-	-
All Crime (excl. Action (NFIB) Fraud)	9307	10288	981	10.5	2573	2577	4	0.2	27.6	25.0	-2.6
- State Based Crime	878	1174	296	33.7	499	559	60	12.0	56.8	47.6	-9.2
- Victim Based Crime	8429	9114	685	8.1	2074	2018	-56	-2.7	24.6	22.1	-2.5
Victim Based Crime	Offences				Outcomes				Solved Rates %		
Crime Type	2015	2016	# diff.	% diff.	2015	2016	# diff.	% diff.	2015	2016	% pt. diff.
Violence Against the Person	2732	3353	621	22.7	917	913	-4	-0.4	33.6	27.2	-6.3
- Homicide	3	3	0	0.0	1	2	1	100.0	33.3	66.7	33.3
- Violence with Injury	1120	1353	233	20.8	400	393	-7	-1.8	35.7	29.0	-6.7
- Violence without Injury	1609	1997	388	24.1	516	518	2	0.4	32.1	25.9	-6.1
Sexual Offences	266	285	19	7.1	49	42	-7	-14.3	18.4	14.7	-3.7
- Rape	92	87	-5	-5.4	13	9	-4	-30.8	14.1	10.3	-3.8
- Rape - Under 16 yrs	33	28	-5	-15.2	5	6	1	20.0	15.2	21.4	6.3
- Rape - Over 16 yrs	59	59	0	0.0	8	3	-5	-62.5	13.6	5.1	-8.5
- Other Sexual Offences	174	198	24	13.8	36	33	-3	-8.3	20.7	16.7	-4.0
Robbery	78	91	13	16.7	12	19	7	58.3	15.4	20.9	5.5
- Robbery of business property	5	7	2	40.0	1	3	2	200.0	20.0	42.9	22.9
- Robbery of Personal Property	73	84	11	15.1	11	16	5	45.5	15.1	19.0	4.0
Theft Offences	4038	4003	-35	-0.9	886	813	-73	-8.2	21.9	20.3	-1.6
- Burglary	1098	1066	-32	-2.9	142	123	-19	-13.4	12.9	11.5	-1.4
- Dwelling Burglary	473	471	-2	-0.4	86	76	-10	-11.6	18.2	16.1	-2.0
- Other Burglary	625	595	-30	-4.8	56	47	-9	-16.1	9.0	7.9	-1.1
- Vehicle Offences (incl. Interference)	671	729	58	8.6	41	42	1	2.4	6.1	5.8	-0.3
- Theft from Vehicle	456	443	-13	-2.9	10	7	-3	-30.0	2.2	1.6	-0.6
- Theft of Motor Vehicle	157	216	59	37.6	27	31	4	14.8	17.2	14.4	-2.8
- Vehicle Interference	58	70	12	20.7	4	4	0	0.0	6.9	5.7	-1.2
- Theft	2269	2208	-61	-2.7	703	648	-55	-7.8	31.0	29.3	-1.6
- Theft from the Person	94	112	18	19.1	5	4	-1	-20.0	5.3	3.6	-1.7
- Theft of Pedal Cycle	122	129	7	5.7	9	6	-3	-33.3	7.4	4.7	-2.7
- Shoplifting	1039	1032	-7	-0.7	579	519	-60	-10.4	55.7	50.3	-5.4
- Other Theft	1014	935	-79	-7.8	110	119	9	8.2	10.8	12.7	1.9
Criminal Damage inc. Arson	1315	1382	67	5.1	210	231	21	10.0	16.0	16.7	0.7
- Criminal Damage	1260	1332	72	5.7	205	228	23	11.2	16.3	17.1	0.8
- Arson	55	50	-5	-9.1	5	3	-2	-40.0	9.1	6.0	-3.1
Racial/Religiously Aggravated Offences	43	57	14	32.6	19	18	-1	-5.3	44.2	31.6	-12.6
State Based Crime	Offences				Outcomes				Solved Rates %		
Crime Type	2015	2016	# diff.	% diff.	2015	2016	# diff.	% diff.	2015	2016	% pt. diff.
Drug Offences	265	245	-20	-7.5	257	224	-33	-12.8	97.0	91.4	-5.6
- Trafficking of Drugs	62	63	1	1.6	55	49	-6	-10.9	88.7	77.8	-10.9
- Possession of Drugs	203	182	-21	-10.3	202	175	-27	-13.4	99.5	96.2	-3.4
Possession of Weapons	58	101	43	74.1	35	69	34	97.1	60.3	68.3	8.0
Public Order	414	636	222	53.6	153	209	56	36.6	37.0	32.9	-4.1
Miscellaneous Crimes against Society	141	192	51	36.2	54	57	3	5.6	38.3	29.7	-8.6

Corporate Services: Performance Summary

Essex Police Performance Summary

Southend

Cumulative Year to August

Top Level	Offences				Outcomes				Solved Rates %		
Crime Type	2015	2016	# diff.	% diff.	2015	2016	# diff.	% diff.	2015	2016	% pt. diff.
Anti-Social Behaviour (incidents)	3255	3321	66	2.0	-	-	-	-	-	-	-
All Crime (excl. Action (NFIB) Fraud)	5841	6334	493	8.4	1135	1309	174	15.3	19.4	20.7	1.2
- State Based Crime	609	847	238	39.1	280	351	71	25.4	46.0	41.4	-4.5
- Victim Based Crime	5232	5487	255	4.9	855	958	103	12.0	16.3	17.5	1.1
Victim Based Crime	Offences				Outcomes				Solved Rates %		
Crime Type	2015	2016	# diff.	% diff.	2015	2016	# diff.	% diff.	2015	2016	% pt. diff.
Violence Against the Person	1574	1777	203	12.9	397	453	56	14.1	25.2	25.5	0.3
- Homicide	3	1	-2	-66.7	2	1	-1	-50.0	66.7	100.0	33.3
- Violence with Injury	655	689	34	5.2	187	193	6	3.2	28.5	28.0	-0.5
- Violence without Injury	916	1087	171	18.7	208	259	51	24.5	22.7	23.8	1.1
Sexual Offences	122	163	41	33.6	18	22	4	22.2	14.8	13.5	-1.3
- Rape	45	61	16	35.6	7	5	-2	-28.6	15.6	8.2	-7.4
- Rape - Under 16 yrs	18	14	-4	-22.2	5	2	-3	-60.0	27.8	14.3	-13.5
- Rape - Over 16 yrs	27	47	20	74.1	2	3	1	50.0	7.4	6.4	-1.0
- Other Sexual Offences	77	102	25	32.5	11	17	6	54.5	14.3	16.7	2.4
Robbery	64	81	17	26.6	8	7	-1	-12.5	12.5	8.6	-3.9
- Robbery of business property	1	6	5	500.0	1	3	2	200.0	100.0	50.0	-50.0
- Robbery of Personal Property	63	75	12	19.0	7	4	-3	-42.9	11.1	5.3	-5.8
Theft Offences	2667	2696	29	1.1	304	342	38	12.5	11.4	12.7	1.3
- Burglary	593	483	-110	-18.5	37	46	9	24.3	6.2	9.5	3.3
- Dwelling Burglary	361	276	-85	-23.5	28	18	-10	-35.7	7.8	6.5	-1.2
- Other Burglary	232	207	-25	-10.8	9	28	19	211.1	3.9	13.5	9.6
- Vehicle Offences (incl. Interference)	690	573	-117	-17.0	27	16	-11	-40.7	3.9	2.8	-1.1
- Theft from Vehicle	477	354	-123	-25.8	8	5	-3	-37.5	1.7	1.4	-0.3
- Theft of Motor Vehicle	147	160	13	8.8	18	9	-9	-50.0	12.2	5.6	-6.6
- Vehicle Interference	66	59	-7	-10.6	1	2	1	100.0	1.5	3.4	1.9
- Theft	1384	1640	256	18.5	240	280	40	16.7	17.3	17.1	-0.3
- Theft from the Person	95	117	22	23.2	5	4	-1	-20.0	5.3	3.4	-1.8
- Theft of Pedal Cycle	156	190	34	21.8	3	4	1	33.3	1.9	2.1	0.2
- Shoplifting	495	647	152	30.7	193	208	15	7.8	39.0	32.1	-6.8
- Other Theft	638	686	48	7.5	39	64	25	64.1	6.1	9.3	3.2
Criminal Damage inc. Arson	805	770	-35	-4.3	128	134	6	4.7	15.9	17.4	1.5
- Criminal Damage	788	750	-38	-4.8	125	131	6	4.8	15.9	17.5	1.6
- Arson	17	20	3	17.6	3	3	0	0.0	17.6	15.0	-2.6
Racial/Religiously Aggravated Offences	51	82	31	60.8	11	14	3	27.3	21.6	17.1	-4.5
State Based Crime	Offences				Outcomes				Solved Rates %		
Crime Type	2015	2016	# diff.	% diff.	2015	2016	# diff.	% diff.	2015	2016	% pt. diff.
Drug Offences	145	157	12	8.3	124	135	11	8.9	85.5	86.0	0.5
- Trafficking of Drugs	49	35	-14	-28.6	34	27	-7	-20.6	69.4	77.1	7.8
- Possession of Drugs	96	122	26	27.1	90	108	18	20.0	93.8	88.5	-5.2
Possession of Weapons	48	49	1	2.1	27	42	15	55.6	56.3	85.7	29.5
Public Order	322	550	228	70.8	92	134	42	45.7	28.6	24.4	-4.2
Miscellaneous Crimes against Society	94	91	-3	-3.2	37	40	3	8.1	39.4	44.0	4.6

Corporate Services: Performance Summary
Essex Police Performance Summary

Southend

Rolling 12 Months to August

Top Level	Offences				Outcomes				Solved Rates %		
Crime Type	2015	2016	# diff.	% diff.	2015	2016	# diff.	% diff.	2015	2016	% pt. diff.
Anti-Social Behaviour (incidents)	7571	7395	-176	-2.3	-	-	-	-	-	-	-
All Crime (excl. Action (NFIB) Fraud)	13222	14729	1507	11.4	3300	3255	-45	-1.4	25.0	22.1	-2.9
- State Based Crime	1429	1761	332	23.2	929	802	-127	-13.7	65.0	45.5	-19.5
- Victim Based Crime	11793	12968	1175	10.0	2371	2453	82	3.5	20.1	18.9	-1.2
Victim Based Crime	Offences				Outcomes				Solved Rates %		
Crime Type	2015	2016	# diff.	% diff.	2015	2016	# diff.	% diff.	2015	2016	% pt. diff.
Violence Against the Person	3390	4237	847	25.0	1056	1133	77	7.3	31.2	26.7	-4.4
- Homicide	4	2	-2	-50.0	3	3	0	0.0	75.0	150.0	75.0
- Violence with Injury	1472	1636	164	11.1	503	503	0	0.0	34.2	30.7	-3.4
- Violence without Injury	1914	2599	685	35.8	550	627	77	14.0	28.7	24.1	-4.6
Sexual Offences	328	375	47	14.3	50	60	10	20.0	15.2	16.0	0.8
- Rape	121	151	30	24.8	23	12	-11	-47.8	19.0	7.9	-11.1
- Rape - Under 16 yrs	38	36	-2	-5.3	12	4	-8	-66.7	31.6	11.1	-20.5
- Rape - Over 16 yrs	83	115	32	38.6	11	8	-3	-27.3	13.3	7.0	-6.3
- Other Sexual Offences	207	224	17	8.2	27	48	21	77.8	13.0	21.4	8.4
Robbery	159	196	37	23.3	25	24	-1	-4.0	15.7	12.2	-3.5
- Robbery of business property	7	18	11	157.1	2	9	7	350.0	28.6	50.0	21.4
- Robbery of Personal Property	152	178	26	17.1	23	15	-8	-34.8	15.1	8.4	-6.7
Theft Offences	6081	6204	123	2.0	965	915	-50	-5.2	15.9	14.7	-1.1
- Burglary	1381	1240	-141	-10.2	115	119	4	3.5	8.3	9.6	1.3
- Dwelling Burglary	857	758	-99	-11.6	83	63	-20	-24.1	9.7	8.3	-1.4
- Other Burglary	524	482	-42	-8.0	32	56	24	75.0	6.1	11.6	5.5
- Vehicle Offences (incl. Interference)	1582	1438	-144	-9.1	86	66	-20	-23.3	5.4	4.6	-0.8
- Theft from Vehicle	1081	928	-153	-14.2	29	28	-1	-3.4	2.7	3.0	0.3
- Theft of Motor Vehicle	344	346	2	0.6	52	33	-19	-36.5	15.1	9.5	-5.6
- Vehicle Interference	157	164	7	4.5	5	5	0	0.0	3.2	3.0	-0.1
- Theft	3118	3526	408	13.1	764	730	-34	-4.5	24.5	20.7	-3.8
- Theft from the Person	223	264	41	18.4	6	8	2	33.3	2.7	3.0	0.3
- Theft of Pedal Cycle	328	398	70	21.3	13	11	-2	-15.4	4.0	2.8	-1.2
- Shoplifting	1113	1351	238	21.4	613	526	-87	-14.2	55.1	38.9	-16.1
- Other Theft	1454	1513	59	4.1	132	185	53	40.2	9.1	12.2	3.1
Criminal Damage inc. Arson	1835	1956	121	6.6	275	321	46	16.7	15.0	16.4	1.4
- Criminal Damage	1790	1903	113	6.3	269	316	47	17.5	15.0	16.6	1.6
- Arson	45	53	8	17.8	6	5	-1	-16.7	13.3	9.4	-3.9
Racial/Religiously Aggravated Offences	125	155	30	24.0	42	33	-9	-21.4	33.6	21.3	-12.3
State Based Crime	Offences				Outcomes				Solved Rates %		
Crime Type	2015	2016	# diff.	% diff.	2015	2016	# diff.	% diff.	2015	2016	% pt. diff.
Drug Offences	482	336	-146	-30.3	485	306	-179	-36.9	100.6	91.1	-9.6
- Trafficking of Drugs	148	68	-80	-54.1	142	59	-83	-58.5	95.9	86.8	-9.2
- Possession of Drugs	334	268	-66	-19.8	343	247	-96	-28.0	102.7	92.2	-10.5
Possession of Weapons	90	128	38	42.2	62	94	32	51.6	68.9	73.4	4.5
Public Order	639	1090	451	70.6	271	322	51	18.8	42.4	29.5	-12.9
Miscellaneous Crimes against Society	218	207	-11	-5.0	111	80	-31	-27.9	50.9	38.6	-12.3

Corporate Services: Performance Summary
Essex Police Performance Summary

Castle Point
Cumulative Year to August

Top Level	Offences				Outcomes				Solved Rates %		
Crime Type	2015	2016	# diff.	% diff.	2015	2016	# diff.	% diff.	2015	2016	% pt. diff.
Anti-Social Behaviour (incidents)	960	834	-126	-13.1	-	-	-	-	-	-	-
All Crime (excl. Action (NFIB) Fraud)	1628	1747	119	7.3	306	340	34	11.1	18.8	19.5	0.7
- State Based Crime	151	225	74	49.0	68	98	30	44.1	45.0	43.6	-1.5
- Victim Based Crime	1477	1522	45	3.0	238	242	4	1.7	16.1	15.9	-0.2
Victim Based Crime	Offences				Outcomes				Solved Rates %		
Crime Type	2015	2016	# diff.	% diff.	2015	2016	# diff.	% diff.	2015	2016	% pt. diff.
Violence Against the Person	414	532	118	28.5	114	121	7	6.1	27.5	22.7	-4.8
- Homicide	0	0	0	-	0	0	0	-	-	-	-
- Violence with Injury	177	203	26	14.7	56	39	-17	-30.4	31.6	19.2	-12.4
- Violence without Injury	237	329	92	38.8	58	82	24	41.4	24.5	24.9	0.5
Sexual Offences	38	39	1	2.6	17	0	-17	-100.0	44.7	0.0	-44.7
- Rape	15	16	1	6.7	1	0	-1	-100.0	6.7	0.0	-6.7
- Rape - Under 16 yrs	8	3	-5	-62.5	0	0	0	-	0.0	0.0	0.0
- Rape - Over 16 yrs	7	13	6	85.7	1	0	-1	-100.0	14.3	0.0	-14.3
- Other Sexual Offences	23	23	0	0.0	16	0	-16	-100.0	69.6	0.0	-69.6
Robbery	16	34	18	112.5	5	2	-3	-60.0	31.3	5.9	-25.4
- Robbery of business property	3	7	4	133.3	2	0	-2	-100.0	66.7	0.0	-66.7
- Robbery of Personal Property	13	27	14	107.7	3	2	-1	-33.3	23.1	7.4	-15.7
Theft Offences	794	719	-75	-9.4	71	81	10	14.1	8.9	11.3	2.3
- Burglary	302	234	-68	-22.5	8	10	2	25.0	2.6	4.3	1.6
- Dwelling Burglary	158	136	-22	-13.9	5	6	1	20.0	3.2	4.4	1.2
- Other Burglary	144	98	-46	-31.9	3	4	1	33.3	2.1	4.1	2.0
- Vehicle Offences (incl. Interference)	185	166	-19	-10.3	7	5	-2	-28.6	3.8	3.0	-0.8
- Theft from Vehicle	111	83	-28	-25.2	5	0	-5	-100.0	4.5	0.0	-4.5
- Theft of Motor Vehicle	57	63	6	10.5	2	5	3	150.0	3.5	7.9	4.4
- Vehicle Interference	17	20	3	17.6	0	0	0	-	0.0	0.0	0.0
- Theft	307	319	12	3.9	56	66	10	17.9	18.2	20.7	2.4
- Theft from the Person	16	20	4	25.0	2	3	1	50.0	12.5	15.0	2.5
- Theft of Pedal Cycle	22	26	4	18.2	1	1	0	0.0	4.5	3.8	-0.7
- Shoplifting	75	98	23	30.7	33	40	7	21.2	44.0	40.8	-3.2
- Other Theft	194	175	-19	-9.8	20	22	2	10.0	10.3	12.6	2.3
Criminal Damage inc. Arson	215	198	-17	-7.9	31	38	7	22.6	14.4	19.2	4.8
- Criminal Damage	207	188	-19	-9.2	30	37	7	23.3	14.5	19.7	5.2
- Arson	8	10	2	25.0	1	1	0	0.0	12.5	10.0	-2.5
Racial/Religiously Aggravated Offences	10	8	-2	-20.0	3	6	3	100.0	30.0	75.0	45.0
State Based Crime	Offences				Outcomes				Solved Rates %		
Crime Type	2015	2016	# diff.	% diff.	2015	2016	# diff.	% diff.	2015	2016	% pt. diff.
Drug Offences	35	41	6	17.1	31	37	6	19.4	88.6	90.2	1.7
- Trafficking of Drugs	5	6	1	20.0	4	4	0	0.0	80.0	66.7	-13.3
- Possession of Drugs	30	35	5	16.7	27	33	6	22.2	90.0	94.3	4.3
Possession of Weapons	8	16	8	100.0	5	11	6	120.0	62.5	68.8	6.3
Public Order	88	128	40	45.5	27	41	14	51.9	30.7	32.0	1.3
Miscellaneous Crimes against Society	20	40	20	100.0	5	9	4	80.0	25.0	22.5	-2.5

Corporate Services: Performance Summary
Essex Police Performance Summary

Castle Point
Rolling 12 Months to August

Top Level	Offences				Outcomes				Solved Rates %		
Crime Type	2015	2016	# diff.	% diff.	2015	2016	# diff.	% diff.	2015	2016	% pt. diff.
Anti-Social Behaviour (incidents)	2162	1826	-336	-15.5	-	-	-	-	-	-	-
All Crime (excl. Action (NFIB) Fraud)	3494	4095	601	17.2	793	807	14	1.8	22.7	19.7	-3.0
- State Based Crime	340	501	161	47.4	186	223	37	19.9	54.7	44.5	-10.2
- Victim Based Crime	3154	3594	440	14.0	607	584	-23	-3.8	19.2	16.2	-3.0
Victim Based Crime	Offences				Outcomes				Solved Rates %		
Crime Type	2015	2016	# diff.	% diff.	2015	2016	# diff.	% diff.	2015	2016	% pt. diff.
Violence Against the Person	864	1224	360	41.7	267	274	7	2.6	30.9	22.4	-8.5
- Homicide	0	1	1	-	0	0	0	-	-	0.0	-
- Violence with Injury	384	463	79	20.6	123	101	-22	-17.9	32.0	21.8	-10.2
- Violence without Injury	480	760	280	58.3	144	173	29	20.1	30.0	22.8	-7.2
Sexual Offences	95	97	2	2.1	33	9	-24	-72.7	34.7	9.3	-25.5
- Rape	24	35	11	45.8	7	3	-4	-57.1	29.2	8.6	-20.6
- Rape - Under 16 yrs	9	13	4	44.4	4	2	-2	-50.0	44.4	15.4	-29.1
- Rape - Over 16 yrs	15	22	7	46.7	3	1	-2	-66.7	20.0	4.5	-15.5
- Other Sexual Offences	71	62	-9	-12.7	26	6	-20	-76.9	36.6	9.7	-26.9
Robbery	34	63	29	85.3	6	8	2	33.3	17.6	12.7	-4.9
- Robbery of business property	11	22	11	100.0	3	3	0	0.0	27.3	13.6	-13.6
- Robbery of Personal Property	23	41	18	78.3	3	5	2	66.7	13.0	12.2	-0.8
Theft Offences	1699	1680	-19	-1.1	236	204	-32	-13.6	13.9	12.1	-1.7
- Burglary	637	599	-38	-6.0	45	37	-8	-17.8	7.1	6.2	-0.9
- Dwelling Burglary	384	296	-88	-22.9	37	20	-17	-45.9	9.6	6.8	-2.9
- Other Burglary	253	303	50	19.8	8	17	9	112.5	3.2	5.6	2.4
- Vehicle Offences (incl. Interference)	401	364	-37	-9.2	43	25	-18	-41.9	10.7	6.9	-3.9
- Theft from Vehicle	237	182	-55	-23.2	36	3	-33	-91.7	15.2	1.6	-13.5
- Theft of Motor Vehicle	118	141	23	19.5	6	22	16	266.7	5.1	15.6	10.5
- Vehicle Interference	46	41	-5	-10.9	1	0	-1	-100.0	2.2	0.0	-2.2
- Theft	661	717	56	8.5	148	142	-6	-4.1	22.4	19.8	-2.6
- Theft from the Person	28	45	17	60.7	2	3	1	50.0	7.1	6.7	-0.5
- Theft of Pedal Cycle	72	59	-13	-18.1	9	2	-7	-77.8	12.5	3.4	-9.1
- Shoplifting	155	214	59	38.1	74	83	9	12.2	47.7	38.8	-9.0
- Other Theft	406	399	-7	-1.7	63	54	-9	-14.3	15.5	13.5	-2.0
Criminal Damage inc. Arson	462	530	68	14.7	65	89	24	36.9	14.1	16.8	2.7
- Criminal Damage	445	506	61	13.7	61	88	27	44.3	13.7	17.4	3.7
- Arson	17	24	7	41.2	4	1	-3	-75.0	23.5	4.2	-19.4
Racial/Religiously Aggravated Offences	18	28	10	55.6	6	8	2	33.3	33.3	28.6	-4.8
State Based Crime	Offences				Outcomes				Solved Rates %		
Crime Type	2015	2016	# diff.	% diff.	2015	2016	# diff.	% diff.	2015	2016	% pt. diff.
Drug Offences	95	111	16	16.8	94	98	4	4.3	98.9	88.3	-10.7
- Trafficking of Drugs	12	15	3	25.0	11	7	-4	-36.4	91.7	46.7	-45.0
- Possession of Drugs	83	96	13	15.7	83	91	8	9.6	100.0	94.8	-5.2
Possession of Weapons	23	33	10	43.5	16	21	5	31.3	69.6	63.6	-5.9
Public Order	171	277	106	62.0	61	84	23	37.7	35.7	30.3	-5.3
Miscellaneous Crimes against Society	51	80	29	56.9	15	20	5	33.3	29.4	25.0	-4.4

Corporate Services: Performance Summary
Essex Police Performance Summary

Rochford
Cumulative Year to August

Top Level	Offences				Outcomes				Solved Rates %		
Crime Type	2015	2016	# diff.	% diff.	2015	2016	# diff.	% diff.	2015	2016	% pt. diff.
Anti-Social Behaviour (incidents)	742	725	-17	-2.3	-	-	-	-	-	-	-
All Crime (excl. Action (NFIB) Fraud)	1250	1332	82	6.6	224	281	57	25.4	17.9	21.1	3.2
- State Based Crime	95	146	51	53.7	49	63	14	28.6	51.6	43.2	-8.4
- Victim Based Crime	1155	1186	31	2.7	175	218	43	24.6	15.2	18.4	3.2
Victim Based Crime	Offences				Outcomes				Solved Rates %		
Crime Type	2015	2016	# diff.	% diff.	2015	2016	# diff.	% diff.	2015	2016	% pt. diff.
Violence Against the Person	301	400	99	32.9	61	101	40	65.6	20.3	25.3	5.0
- Homicide	0	0	0	-	1	0	-1	-100.0	-	-	-
- Violence with Injury	127	145	18	14.2	32	41	9	28.1	25.2	28.3	3.1
- Violence without Injury	174	255	81	46.6	28	60	32	114.3	16.1	23.5	7.4
Sexual Offences	27	31	4	14.8	5	0	-5	-100.0	18.5	0.0	-18.5
- Rape	10	14	4	40.0	1	0	-1	-100.0	10.0	0.0	-10.0
- Rape - Under 16 yrs	3	4	1	33.3	0	0	0	-	0.0	0.0	0.0
- Rape - Over 16 yrs	7	10	3	42.9	1	0	-1	-100.0	14.3	0.0	-14.3
- Other Sexual Offences	17	17	0	0.0	4	0	-4	-100.0	23.5	0.0	-23.5
Robbery	11	7	-4	-36.4	4	0	-4	-100.0	36.4	0.0	-36.4
- Robbery of business property	0	1	1	-	0	0	0	-	-	0.0	-
- Robbery of Personal Property	11	6	-5	-45.5	4	0	-4	-100.0	36.4	0.0	-36.4
Theft Offences	634	556	-78	-12.3	85	97	12	14.1	13.4	17.4	4.0
- Burglary	189	160	-29	-15.3	3	5	2	66.7	1.6	3.1	1.5
- Dwelling Burglary	106	92	-14	-13.2	1	3	2	200.0	0.9	3.3	2.3
- Other Burglary	83	68	-15	-18.1	2	2	0	0.0	2.4	2.9	0.5
- Vehicle Offences (incl. Interference)	130	116	-14	-10.8	4	4	0	0.0	3.1	3.4	0.4
- Theft from Vehicle	75	61	-14	-18.7	0	1	1	-	0.0	1.6	1.6
- Theft of Motor Vehicle	50	44	-6	-12.0	4	2	-2	-50.0	8.0	4.5	-3.5
- Vehicle Interference	5	11	6	120.0	0	1	1	-	0.0	9.1	9.1
- Theft	315	280	-35	-11.1	78	88	10	12.8	24.8	31.4	6.7
- Theft from the Person	15	11	-4	-26.7	1	1	0	0.0	6.7	9.1	2.4
- Theft of Pedal Cycle	27	12	-15	-55.6	0	2	2	-	0.0	16.7	16.7
- Shoplifting	146	127	-19	-13.0	66	71	5	7.6	45.2	55.9	10.7
- Other Theft	127	130	3	2.4	11	14	3	27.3	8.7	10.8	2.1
Criminal Damage inc. Arson	182	192	10	5.5	20	20	0	0.0	11.0	10.4	-0.6
- Criminal Damage	176	184	8	4.5	19	20	1	5.3	10.8	10.9	0.1
- Arson	6	8	2	33.3	1	0	-1	-100.0	16.7	0.0	-16.7
Racial/Religiously Aggravated Offences	6	4	-2	-33.3	1	0	-1	-100.0	16.7	0.0	-16.7
State Based Crime	Offences				Outcomes				Solved Rates %		
Crime Type	2015	2016	# diff.	% diff.	2015	2016	# diff.	% diff.	2015	2016	% pt. diff.
Drug Offences	24	38	14	58.3	25	35	10	40.0	104.2	92.1	-12.1
- Trafficking of Drugs	4	8	4	100.0	3	5	2	66.7	75.0	62.5	-12.5
- Possession of Drugs	20	30	10	50.0	22	30	8	36.4	110.0	100.0	-10.0
Possession of Weapons	10	6	-4	-40.0	7	5	-2	-28.6	70.0	83.3	13.3
Public Order	51	88	37	72.5	14	18	4	28.6	27.5	20.5	-7.0
Miscellaneous Crimes against Society	10	14	4	40.0	3	5	2	66.7	30.0	35.7	5.7

Corporate Services: Performance Summary
Essex Police Performance Summary

Rochford

Rolling 12 Months to August

Top Level	Offences				Outcomes				Solved Rates %		
Crime Type	2015	2016	# diff.	% diff.	2015	2016	# diff.	% diff.	2015	2016	% pt. diff.
Anti-Social Behaviour (incidents)	1673	1606	-67	-4.0	-	-	-	-	-	-	-
All Crime (excl. Action (NFIB) Fraud)	2825	3227	402	14.2	662	640	-22	-3.3	23.4	19.8	-3.6
- State Based Crime	215	317	102	47.4	133	126	-7	-5.3	61.9	39.7	-22.1
- Victim Based Crime	2610	2910	300	11.5	529	514	-15	-2.8	20.3	17.7	-2.6
Victim Based Crime	Offences				Outcomes				Solved Rates %		
Crime Type	2015	2016	# diff.	% diff.	2015	2016	# diff.	% diff.	2015	2016	% pt. diff.
Violence Against the Person	658	935	277	42.1	200	222	22	11.0	30.4	23.7	-6.7
- Homicide	1	0	-1	-100.0	1	0	-1	-100.0	100.0	-	-
- Violence with Injury	293	336	43	14.7	103	96	-7	-6.8	35.2	28.6	-6.6
- Violence without Injury	364	599	235	64.6	96	126	30	31.3	26.4	21.0	-5.3
Sexual Offences	69	85	16	23.2	21	11	-10	-47.6	30.4	12.9	-17.5
- Rape	28	33	5	17.9	4	3	-1	-25.0	14.3	9.1	-5.2
- Rape - Under 16 yrs	9	12	3	33.3	0	1	1	-	0.0	8.3	8.3
- Rape - Over 16 yrs	19	21	2	10.5	4	2	-2	-50.0	21.1	9.5	-11.5
- Other Sexual Offences	41	52	11	26.8	17	8	-9	-52.9	41.5	15.4	-26.1
Robbery	21	17	-4	-19.0	6	1	-5	-83.3	28.6	5.9	-22.7
- Robbery of business property	3	3	0	0.0	1	0	-1	-100.0	33.3	0.0	-33.3
- Robbery of Personal Property	18	14	-4	-22.2	5	1	-4	-80.0	27.8	7.1	-20.6
Theft Offences	1432	1362	-70	-4.9	241	233	-8	-3.3	16.8	17.1	0.3
- Burglary	417	416	-1	-0.2	15	19	4	26.7	3.6	4.6	1.0
- Dwelling Burglary	253	249	-4	-1.6	8	12	4	50.0	3.2	4.8	1.7
- Other Burglary	164	167	3	1.8	7	7	0	0.0	4.3	4.2	-0.1
- Vehicle Offences (incl. Interference)	304	293	-11	-3.6	12	9	-3	-25.0	3.9	3.1	-0.9
- Theft from Vehicle	177	167	-10	-5.6	2	2	0	0.0	1.1	1.2	0.1
- Theft of Motor Vehicle	109	96	-13	-11.9	9	6	-3	-33.3	8.3	6.3	-2.0
- Vehicle Interference	18	30	12	66.7	1	1	0	0.0	5.6	3.3	-2.2
- Theft	711	653	-58	-8.2	214	205	-9	-4.2	30.1	31.4	1.3
- Theft from the Person	42	35	-7	-16.7	1	1	0	0.0	2.4	2.9	0.5
- Theft of Pedal Cycle	43	44	1	2.3	1	6	5	500.0	2.3	13.6	11.3
- Shoplifting	295	283	-12	-4.1	177	170	-7	-4.0	60.0	60.1	0.1
- Other Theft	331	291	-40	-12.1	35	28	-7	-20.0	10.6	9.6	-1.0
Criminal Damage inc. Arson	430	511	81	18.8	61	47	-14	-23.0	14.2	9.2	-5.0
- Criminal Damage	415	495	80	19.3	59	47	-12	-20.3	14.2	9.5	-4.7
- Arson	15	16	1	6.7	2	0	-2	-100.0	13.3	0.0	-13.3
Racial/Religiously Aggravated Offences	14	11	-3	-21.4	5	4	-1	-20.0	35.7	36.4	0.6
State Based Crime	Offences				Outcomes				Solved Rates %		
Crime Type	2015	2016	# diff.	% diff.	2015	2016	# diff.	% diff.	2015	2016	% pt. diff.
Drug Offences	71	66	-5	-7.0	68	60	-8	-11.8	95.8	90.9	-4.9
- Trafficking of Drugs	12	12	0	0.0	11	8	-3	-27.3	91.7	66.7	-25.0
- Possession of Drugs	59	54	-5	-8.5	57	52	-5	-8.8	96.6	96.3	-0.3
Possession of Weapons	22	22	0	0.0	18	17	-1	-5.6	81.8	77.3	-4.5
Public Order	94	179	85	90.4	35	38	3	8.6	37.2	21.2	-16.0
Miscellaneous Crimes against Society	28	50	22	78.6	12	11	-1	-8.3	42.9	22.0	-20.9

Corporate Services: Performance Summary
Essex Police Performance Summary

Basildon
Cumulative Year to August

Top Level	Offences				Outcomes				Solved Rates %		
Crime Type	2015	2016	# diff.	% diff.	2015	2016	# diff.	% diff.	2015	2016	% pt. diff.
Anti-Social Behaviour (incidents)	2805	3170	365	13.0	-	-	-	-	-	-	-
All Crime (excl. Action (NFIB) Fraud)	5766	6303	537	9.3	1027	1135	108	10.5	17.8	18.0	0.2
- State Based Crime	511	738	227	44.4	238	312	74	31.1	46.6	42.3	-4.3
- Victim Based Crime	5255	5565	310	5.9	789	823	34	4.3	15.0	14.8	-0.2
Victim Based Crime	Offences				Outcomes				Solved Rates %		
Crime Type	2015	2016	# diff.	% diff.	2015	2016	# diff.	% diff.	2015	2016	% pt. diff.
Violence Against the Person	1367	1623	256	18.7	301	368	67	22.3	22.0	22.7	0.7
- Homicide	3	1	-2	-66.7	2	1	-1	-50.0	66.7	100.0	33.3
- Violence with Injury	552	625	73	13.2	130	165	35	26.9	23.6	26.4	2.8
- Violence without Injury	812	997	185	22.8	169	202	33	19.5	20.8	20.3	-0.6
Sexual Offences	130	118	-12	-9.2	14	19	5	35.7	10.8	16.1	5.3
- Rape	45	39	-6	-13.3	2	3	1	50.0	4.4	7.7	3.2
- Rape - Under 16 yrs	18	20	2	11.1	2	0	-2	-100.0	11.1	0.0	-11.1
- Rape - Over 16 yrs	27	19	-8	-29.6	0	3	3	-	0.0	15.8	15.8
- Other Sexual Offences	85	79	-6	-7.1	12	16	4	33.3	14.1	20.3	6.1
Robbery	75	56	-19	-25.3	10	7	-3	-30.0	13.3	12.5	-0.8
- Robbery of business property	8	7	-1	-12.5	3	3	0	0.0	37.5	42.9	5.4
- Robbery of Personal Property	67	49	-18	-26.9	7	4	-3	-42.9	10.4	8.2	-2.3
Theft Offences	2780	2880	100	3.6	391	325	-66	-16.9	14.1	11.3	-2.8
- Burglary	773	902	129	16.7	41	54	13	31.7	5.3	6.0	0.7
- Dwelling Burglary	487	571	84	17.2	34	33	-1	-2.9	7.0	5.8	-1.2
- Other Burglary	286	331	45	15.7	7	21	14	200.0	2.4	6.3	3.9
- Vehicle Offences (incl. Interference)	895	777	-118	-13.2	19	19	0	0.0	2.1	2.4	0.3
- Theft from Vehicle	555	479	-76	-13.7	4	3	-1	-25.0	0.7	0.6	-0.1
- Theft of Motor Vehicle	227	198	-29	-12.8	15	16	1	6.7	6.6	8.1	1.5
- Vehicle Interference	113	100	-13	-11.5	0	0	0	-	0.0	0.0	0.0
- Theft	1112	1201	89	8.0	331	252	-79	-23.9	29.8	21.0	-8.8
- Theft from the Person	67	74	7	10.4	0	3	3	-	0.0	4.1	4.1
- Theft of Pedal Cycle	91	61	-30	-33.0	2	5	3	150.0	2.2	8.2	6.0
- Shoplifting	463	464	1	0.2	285	183	-102	-35.8	61.6	39.4	-22.1
- Other Theft	491	602	111	22.6	44	61	17	38.6	9.0	10.1	1.2
Criminal Damage inc. Arson	903	888	-15	-1.7	73	104	31	42.5	8.1	11.7	3.6
- Criminal Damage	885	855	-30	-3.4	72	101	29	40.3	8.1	11.8	3.7
- Arson	18	33	15	83.3	1	3	2	200.0	5.6	9.1	3.5
Racial/Religiously Aggravated Offences	43	47	4	9.3	7	17	10	142.9	16.3	36.2	19.9
State Based Crime	Offences				Outcomes				Solved Rates %		
Crime Type	2015	2016	# diff.	% diff.	2015	2016	# diff.	% diff.	2015	2016	% pt. diff.
Drug Offences	155	137	-18	-11.6	145	140	-5	-3.4	93.5	102.2	8.6
- Trafficking of Drugs	37	31	-6	-16.2	31	35	4	12.9	83.8	112.9	29.1
- Possession of Drugs	118	106	-12	-10.2	114	105	-9	-7.9	96.6	99.1	2.4
Possession of Weapons	38	51	13	34.2	17	40	23	135.3	44.7	78.4	33.7
Public Order	240	427	187	77.9	55	95	40	72.7	22.9	22.2	-0.7
Miscellaneous Crimes against Society	78	123	45	57.7	21	37	16	76.2	26.9	30.1	3.2

Corporate Services: Performance Summary
Essex Police Performance Summary

Basildon

Rolling 12 Months to August

Top Level	Offences				Outcomes				Solved Rates %		
Crime Type	2015	2016	# diff.	% diff.	2015	2016	# diff.	% diff.	2015	2016	% pt. diff.
Anti-Social Behaviour (incidents)	6243	6441	198	3.2	-	-	-	-	-	-	-
All Crime (excl. Action (NFIB) Fraud)	13004	14811	1807	13.9	2836	2819	-17	-0.6	21.8	19.0	-2.8
- State Based Crime	1167	1599	432	37.0	709	707	-2	-0.3	60.8	44.2	-16.5
- Victim Based Crime	11837	13212	1375	11.6	2127	2112	-15	-0.7	18.0	16.0	-2.0
Victim Based Crime	Offences				Outcomes				Solved Rates %		
Crime Type	2015	2016	# diff.	% diff.	2015	2016	# diff.	% diff.	2015	2016	% pt. diff.
Violence Against the Person	2884	3734	850	29.5	774	907	133	17.2	26.8	24.3	-2.5
- Homicide	3	5	2	66.7	2	2	0	0.0	66.7	40.0	-26.7
- Violence with Injury	1250	1429	179	14.3	370	385	15	4.1	29.6	26.9	-2.7
- Violence without Injury	1631	2300	669	41.0	402	520	118	29.4	24.6	22.6	-2.0
Sexual Offences	316	327	11	3.5	56	51	-5	-8.9	17.7	15.6	-2.1
- Rape	110	112	2	1.8	13	13	0	0.0	11.8	11.6	-0.2
- Rape - Under 16 yrs	43	38	-5	-11.6	6	7	1	16.7	14.0	18.4	4.5
- Rape - Over 16 yrs	67	74	7	10.4	7	6	-1	-14.3	10.4	8.1	-2.3
- Other Sexual Offences	206	215	9	4.4	43	38	-5	-11.6	20.9	17.7	-3.2
Robbery	163	169	6	3.7	27	30	3	11.1	16.6	17.8	1.2
- Robbery of business property	20	12	-8	-40.0	7	7	0	0.0	35.0	58.3	23.3
- Robbery of Personal Property	143	157	14	9.8	20	23	3	15.0	14.0	14.6	0.7
Theft Offences	6638	6812	174	2.6	1077	883	-194	-18.0	16.2	13.0	-3.3
- Burglary	1962	2015	53	2.7	161	132	-29	-18.0	8.2	6.6	-1.7
- Dwelling Burglary	1173	1233	60	5.1	129	85	-44	-34.1	11.0	6.9	-4.1
- Other Burglary	789	782	-7	-0.9	32	47	15	46.9	4.1	6.0	2.0
- Vehicle Offences (incl. Interference)	2054	2025	-29	-1.4	72	69	-3	-4.2	3.5	3.4	-0.1
- Theft from Vehicle	1354	1286	-68	-5.0	30	24	-6	-20.0	2.2	1.9	-0.3
- Theft of Motor Vehicle	430	474	44	10.2	38	38	0	0.0	8.8	8.0	-0.8
- Vehicle Interference	270	265	-5	-1.9	4	7	3	75.0	1.5	2.6	1.2
- Theft	2622	2772	150	5.7	844	682	-162	-19.2	32.2	24.6	-7.6
- Theft from the Person	178	205	27	15.2	3	8	5	166.7	1.7	3.9	2.2
- Theft of Pedal Cycle	219	153	-66	-30.1	11	7	-4	-36.4	5.0	4.6	-0.4
- Shoplifting	1044	1109	65	6.2	673	532	-141	-21.0	64.5	48.0	-16.5
- Other Theft	1181	1305	124	10.5	157	135	-22	-14.0	13.3	10.3	-2.9
Criminal Damage inc. Arson	1836	2170	334	18.2	193	241	48	24.9	10.5	11.1	0.6
- Criminal Damage	1794	2094	300	16.7	187	238	51	27.3	10.4	11.4	0.9
- Arson	42	76	34	81.0	6	3	-3	-50.0	14.3	3.9	-10.3
Racial/Religiously Aggravated Offences	105	96	-9	-8.6	25	35	10	40.0	23.8	36.5	12.6
State Based Crime	Offences				Outcomes				Solved Rates %		
Crime Type	2015	2016	# diff.	% diff.	2015	2016	# diff.	% diff.	2015	2016	% pt. diff.
Drug Offences	439	332	-107	-24.4	424	315	-109	-25.7	96.6	94.9	-1.7
- Trafficking of Drugs	95	82	-13	-13.7	91	70	-21	-23.1	95.8	85.4	-10.4
- Possession of Drugs	344	250	-94	-27.3	333	245	-88	-26.4	96.8	98.0	1.2
Possession of Weapons	80	117	37	46.3	48	73	25	52.1	60.0	62.4	2.4
Public Order	488	894	406	83.2	172	235	63	36.6	35.2	26.3	-9.0
Miscellaneous Crimes against Society	160	256	96	60.0	65	84	19	29.2	40.6	32.8	-7.8

Corporate Services: Performance Summary
Essex Police Performance Summary

Thurrock
Cumulative Year to August

Top Level	Offences				Outcomes				Solved Rates %		
Crime Type	2015	2016	# diff.	% diff.	2015	2016	# diff.	% diff.	2015	2016	% pt. diff.
Anti-Social Behaviour (incidents)	2584	2499	-85	-3.3	-	-	-	-	-	-	-
All Crime (excl. Action (NFIB) Fraud)	4926	5146	220	4.5	922	1095	173	18.8	18.7	21.3	2.6
- State Based Crime	427	554	127	29.7	199	250	51	25.6	46.6	45.1	-1.5
- Victim Based Crime	4499	4592	93	2.1	723	845	122	16.9	16.1	18.4	2.3
Victim Based Crime	Offences				Outcomes				Solved Rates %		
Crime Type	2015	2016	# diff.	% diff.	2015	2016	# diff.	% diff.	2015	2016	% pt. diff.
Violence Against the Person	1168	1385	217	18.6	323	354	31	9.6	27.7	25.6	-2.1
- Homicide	0	1	1	-	0	0	0	-	-	0.0	-
- Violence with Injury	499	528	29	5.8	161	154	-7	-4.3	32.3	29.2	-3.1
- Violence without Injury	669	856	187	28.0	162	200	38	23.5	24.2	23.4	-0.9
Sexual Offences	89	102	13	14.6	9	13	4	44.4	10.1	12.7	2.6
- Rape	38	37	-1	-2.6	1	1	0	0.0	2.6	2.7	0.1
- Rape - Under 16 yrs	15	16	1	6.7	0	0	0	-	0.0	0.0	0.0
- Rape - Over 16 yrs	23	21	-2	-8.7	1	1	0	0.0	4.3	4.8	0.4
- Other Sexual Offences	51	65	14	27.5	8	12	4	50.0	15.7	18.5	2.8
Robbery	42	44	2	4.8	10	6	-4	-40.0	23.8	13.6	-10.2
- Robbery of business property	6	2	-4	-66.7	3	3	0	0.0	50.0	150.0	100.0
- Robbery of Personal Property	36	42	6	16.7	7	3	-4	-57.1	19.4	7.1	-12.3
Theft Offences	2474	2367	-107	-4.3	310	379	69	22.3	12.5	16.0	3.5
- Burglary	501	539	38	7.6	27	38	11	40.7	5.4	7.1	1.7
- Dwelling Burglary	242	290	48	19.8	21	29	8	38.1	8.7	10.0	1.3
- Other Burglary	259	249	-10	-3.9	6	9	3	50.0	2.3	3.6	1.3
- Vehicle Offences (incl. Interference)	668	649	-19	-2.8	15	24	9	60.0	2.2	3.7	1.5
- Theft from Vehicle	384	393	9	2.3	3	8	5	166.7	0.8	2.0	1.3
- Theft of Motor Vehicle	237	204	-33	-13.9	12	16	4	33.3	5.1	7.8	2.8
- Vehicle Interference	47	52	5	10.6	0	0	0	-	0.0	0.0	0.0
- Theft	1305	1179	-126	-9.7	268	317	49	18.3	20.5	26.9	6.4
- Theft from the Person	64	67	3	4.7	0	2	2	-	0.0	3.0	3.0
- Theft of Pedal Cycle	139	77	-62	-44.6	0	4	4	-	0.0	5.2	5.2
- Shoplifting	510	523	13	2.5	216	271	55	25.5	42.4	51.8	9.5
- Other Theft	592	512	-80	-13.5	52	40	-12	-23.1	8.8	7.8	-1.0
Criminal Damage inc. Arson	726	694	-32	-4.4	71	93	22	31.0	9.8	13.4	3.6
- Criminal Damage	678	659	-19	-2.8	67	93	26	38.8	9.9	14.1	4.2
- Arson	48	35	-13	-27.1	4	0	-4	-100.0	8.3	0.0	-8.3
Racial/Religiously Aggravated Offences	51	90	39	76.5	4	20	16	400.0	7.8	22.2	14.4
State Based Crime	Offences				Outcomes				Solved Rates %		
Crime Type	2015	2016	# diff.	% diff.	2015	2016	# diff.	% diff.	2015	2016	% pt. diff.
Drug Offences	114	130	16	14.0	101	112	11	10.9	88.6	86.2	-2.4
- Trafficking of Drugs	20	28	8	40.0	17	16	-1	-5.9	85.0	57.1	-27.9
- Possession of Drugs	94	102	8	8.5	84	96	12	14.3	89.4	94.1	4.8
Possession of Weapons	45	24	-21	-46.7	24	17	-7	-29.2	53.3	70.8	17.5
Public Order	196	324	128	65.3	50	84	34	68.0	25.5	25.9	0.4
Miscellaneous Crimes against Society	72	76	4	5.6	24	37	13	54.2	33.3	48.7	15.4

Corporate Services: Performance Summary
Essex Police Performance Summary

Thurrock
Rolling 12 Months to August

Top Level	Offences				Outcomes				Solved Rates %		
Crime Type	2015	2016	# diff.	% diff.	2015	2016	# diff.	% diff.	2015	2016	% pt. diff.
Anti-Social Behaviour (incidents)	5855	5510	-345	-5.9	-	-	-	-	-	-	-
All Crime (excl. Action (NFIB) Fraud)	11297	12631	1334	11.8	2425	2666	241	9.9	21.5	21.1	-0.4
- State Based Crime	920	1283	363	39.5	516	589	73	14.1	56.1	45.9	-10.2
- Victim Based Crime	10377	11348	971	9.4	1909	2077	168	8.8	18.4	18.3	-0.1
Victim Based Crime	Offences				Outcomes				Solved Rates %		
Crime Type	2015	2016	# diff.	% diff.	2015	2016	# diff.	% diff.	2015	2016	% pt. diff.
Violence Against the Person	2509	3226	717	28.6	768	852	84	10.9	30.6	26.4	-4.2
- Homicide	0	2	2	-	0	0	0	-	-	0.0	-
- Violence with Injury	1065	1211	146	13.7	375	373	-2	-0.5	35.2	30.8	-4.4
- Violence without Injury	1444	2013	569	39.4	393	479	86	21.9	27.2	23.8	-3.4
Sexual Offences	237	271	34	14.3	37	39	2	5.4	15.6	14.4	-1.2
- Rape	97	101	4	4.1	10	11	1	10.0	10.3	10.9	0.6
- Rape - Under 16 yrs	41	32	-9	-22.0	5	10	5	100.0	12.2	31.3	19.1
- Rape - Over 16 yrs	56	69	13	23.2	5	1	-4	-80.0	8.9	1.4	-7.5
- Other Sexual Offences	140	170	30	21.4	27	28	1	3.7	19.3	16.5	-2.8
Robbery	108	119	11	10.2	28	24	-4	-14.3	25.9	20.2	-5.8
- Robbery of business property	20	13	-7	-35.0	7	8	1	14.3	35.0	61.5	26.5
- Robbery of Personal Property	88	106	18	20.5	21	16	-5	-23.8	23.9	15.1	-8.8
Theft Offences	5968	6059	91	1.5	896	932	36	4.0	15.0	15.4	0.4
- Burglary	1408	1450	42	3.0	134	97	-37	-27.6	9.5	6.7	-2.8
- Dwelling Burglary	773	745	-28	-3.6	103	71	-32	-31.1	13.3	9.5	-3.8
- Other Burglary	635	705	70	11.0	31	26	-5	-16.1	4.9	3.7	-1.2
- Vehicle Offences (incl. Interference)	1671	1663	-8	-0.5	73	60	-13	-17.8	4.4	3.6	-0.8
- Theft from Vehicle	995	1028	33	3.3	18	21	3	16.7	1.8	2.0	0.2
- Theft of Motor Vehicle	509	510	1	0.2	49	38	-11	-22.4	9.6	7.5	-2.2
- Vehicle Interference	167	125	-42	-25.1	6	1	-5	-83.3	3.6	0.8	-2.8
- Theft	2889	2946	57	2.0	689	775	86	12.5	23.8	26.3	2.5
- Theft from the Person	135	176	41	30.4	0	8	8	-	0.0	4.5	4.5
- Theft of Pedal Cycle	283	216	-67	-23.7	9	8	-1	-11.1	3.2	3.7	0.5
- Shoplifting	1154	1329	175	15.2	538	651	113	21.0	46.6	49.0	2.4
- Other Theft	1317	1225	-92	-7.0	142	108	-34	-23.9	10.8	8.8	-2.0
Criminal Damage inc. Arson	1555	1673	118	7.6	180	230	50	27.8	11.6	13.7	2.2
- Criminal Damage	1484	1605	121	8.2	173	226	53	30.6	11.7	14.1	2.4
- Arson	71	68	-3	-4.2	7	4	-3	-42.9	9.9	5.9	-4.0
Racial/Religiously Aggravated Offences	143	174	31	21.7	29	38	9	31.0	20.3	21.8	1.6
State Based Crime	Offences				Outcomes				Solved Rates %		
Crime Type	2015	2016	# diff.	% diff.	2015	2016	# diff.	% diff.	2015	2016	% pt. diff.
Drug Offences	289	307	18	6.2	272	265	-7	-2.6	94.1	86.3	-7.8
- Trafficking of Drugs	44	54	10	22.7	41	29	-12	-29.3	93.2	53.7	-39.5
- Possession of Drugs	245	253	8	3.3	231	236	5	2.2	94.3	93.3	-1.0
Possession of Weapons	79	71	-8	-10.1	48	48	0	0.0	60.8	67.6	6.8
Public Order	413	724	311	75.3	141	193	52	36.9	34.1	26.7	-7.5
Miscellaneous Crimes against Society	139	181	42	30.2	55	83	28	50.9	39.6	45.9	6.3

Corporate Services: Performance Summary
Essex Police Performance Summary

Epping
Cumulative Year to August

Top Level	Offences				Outcomes				Solved Rates %		
Crime Type	2015	2016	# diff.	% diff.	2015	2016	# diff.	% diff.	2015	2016	% pt. diff.
Anti-Social Behaviour (incidents)	1695	1719	24	1.4	-	-	-	-	-	-	-
All Crime (excl. Action (NFIB) Fraud)	3216	3529	313	9.7	374	522	148	39.6	11.6	14.8	3.2
- State Based Crime	314	389	75	23.9	110	169	59	53.6	35.0	43.4	8.4
- Victim Based Crime	2902	3140	238	8.2	264	353	89	33.7	9.1	11.2	2.1
Victim Based Crime	Offences				Outcomes				Solved Rates %		
Crime Type	2015	2016	# diff.	% diff.	2015	2016	# diff.	% diff.	2015	2016	% pt. diff.
Violence Against the Person	653	832	179	27.4	115	171	56	48.7	17.6	20.6	2.9
- Homicide	0	0	0	-	0	0	0	-	-	-	-
- Violence with Injury	252	333	81	32.1	55	63	8	14.5	21.8	18.9	-2.9
- Violence without Injury	401	499	98	24.4	60	108	48	80.0	15.0	21.6	6.7
Sexual Offences	56	57	1	1.8	9	7	-2	-22.2	16.1	12.3	-3.8
- Rape	17	20	3	17.6	5	0	-5	-100.0	29.4	0.0	-29.4
- Rape - Under 16 yrs	6	8	2	33.3	0	0	0	-	0.0	0.0	0.0
- Rape - Over 16 yrs	11	12	1	9.1	5	0	-5	-100.0	45.5	0.0	-45.5
- Other Sexual Offences	39	37	-2	-5.1	4	7	3	75.0	10.3	18.9	8.7
Robbery	34	22	-12	-35.3	4	1	-3	-75.0	11.8	4.5	-7.2
- Robbery of business property	2	1	-1	-50.0	0	0	0	-	0.0	0.0	0.0
- Robbery of Personal Property	32	21	-11	-34.4	4	1	-3	-75.0	12.5	4.8	-7.7
Theft Offences	1804	1805	1	0.1	94	112	18	19.1	5.2	6.2	1.0
- Burglary	511	463	-48	-9.4	30	18	-12	-40.0	5.9	3.9	-2.0
- Dwelling Burglary	320	270	-50	-15.6	28	7	-21	-75.0	8.8	2.6	-6.2
- Other Burglary	191	193	2	1.0	2	11	9	450.0	1.0	5.7	4.7
- Vehicle Offences (incl. Interference)	617	623	6	1.0	15	10	-5	-33.3	2.4	1.6	-0.8
- Theft from Vehicle	378	357	-21	-5.6	6	6	0	0.0	1.6	1.7	0.1
- Theft of Motor Vehicle	184	194	10	5.4	9	3	-6	-66.7	4.9	1.5	-3.3
- Vehicle Interference	55	72	17	30.9	0	1	1	-	0.0	1.4	1.4
- Theft	676	719	43	6.4	49	84	35	71.4	7.2	11.7	4.4
- Theft from the Person	21	38	17	81.0	0	1	1	-	0.0	2.6	2.6
- Theft of Pedal Cycle	41	26	-15	-36.6	1	0	-1	-100.0	2.4	0.0	-2.4
- Shoplifting	193	213	20	10.4	38	51	13	34.2	19.7	23.9	4.3
- Other Theft	421	442	21	5.0	10	32	22	220.0	2.4	7.2	4.9
Criminal Damage inc. Arson	355	424	69	19.4	42	62	20	47.6	11.8	14.6	2.8
- Criminal Damage	343	413	70	20.4	42	60	18	42.9	12.2	14.5	2.3
- Arson	12	11	-1	-8.3	0	2	2	-	0.0	18.2	18.2
Racial/Religiously Aggravated Offences	34	51	17	50.0	4	3	-1	-25.0	11.8	5.9	-5.9
State Based Crime	Offences				Outcomes				Solved Rates %		
Crime Type	2015	2016	# diff.	% diff.	2015	2016	# diff.	% diff.	2015	2016	% pt. diff.
Drug Offences	75	99	24	32.0	65	96	31	47.7	86.7	97.0	10.3
- Trafficking of Drugs	11	13	2	18.2	6	15	9	150.0	54.5	115.4	60.8
- Possession of Drugs	64	86	22	34.4	59	81	22	37.3	92.2	94.2	2.0
Possession of Weapons	19	22	3	15.8	7	15	8	114.3	36.8	68.2	31.3
Public Order	169	225	56	33.1	25	47	22	88.0	14.8	20.9	6.1
Miscellaneous Crimes against Society	51	43	-8	-15.7	13	11	-2	-15.4	25.5	25.6	0.1

Corporate Services: Performance Summary
Essex Police Performance Summary

Epping
Rolling 12 Months to August

Top Level	Offences				Outcomes				Solved Rates %		
Crime Type	2015	2016	# diff.	% diff.	2015	2016	# diff.	% diff.	2015	2016	% pt. diff.
Anti-Social Behaviour (incidents)	3729	3618	-111	-3.0	-	-	-	-	-	-	-
All Crime (excl. Action (NFIB) Fraud)	6975	7684	709	10.2	1109	1224	115	10.4	15.9	15.9	0.0
- State Based Crime	652	804	152	23.3	301	369	68	22.6	46.2	45.9	-0.3
- Victim Based Crime	6323	6880	557	8.8	808	855	47	5.8	12.8	12.4	-0.4
Victim Based Crime	Offences				Outcomes				Solved Rates %		
Crime Type	2015	2016	# diff.	% diff.	2015	2016	# diff.	% diff.	2015	2016	% pt. diff.
Violence Against the Person	1465	1923	458	31.3	359	445	86	24.0	24.5	23.1	-1.4
- Homicide	0	2	2	-	0	1	1	-	-	50.0	-
- Violence with Injury	582	746	164	28.2	167	182	15	9.0	28.7	24.4	-4.3
- Violence without Injury	883	1175	292	33.1	192	262	70	36.5	21.7	22.3	0.6
Sexual Offences	135	128	-7	-5.2	21	11	-10	-47.6	15.6	8.6	-7.0
- Rape	45	43	-2	-4.4	9	1	-8	-88.9	20.0	2.3	-17.7
- Rape - Under 16 yrs	14	15	1	7.1	0	1	1	-	0.0	6.7	6.7
- Rape - Over 16 yrs	31	28	-3	-9.7	9	0	-9	-100.0	29.0	0.0	-29.0
- Other Sexual Offences	90	85	-5	-5.6	12	10	-2	-16.7	13.3	11.8	-1.6
Robbery	80	73	-7	-8.8	13	3	-10	-76.9	16.3	4.1	-12.1
- Robbery of business property	4	5	1	25.0	0	1	1	-	0.0	20.0	20.0
- Robbery of Personal Property	76	68	-8	-10.5	13	2	-11	-84.6	17.1	2.9	-14.2
Theft Offences	3825	3834	9	0.2	318	264	-54	-17.0	8.3	6.9	-1.4
- Burglary	1151	1026	-125	-10.9	88	52	-36	-40.9	7.6	5.1	-2.6
- Dwelling Burglary	762	639	-123	-16.1	83	32	-51	-61.4	10.9	5.0	-5.9
- Other Burglary	389	387	-2	-0.5	5	20	15	300.0	1.3	5.2	3.9
- Vehicle Offences (incl. Interference)	1253	1249	-4	-0.3	32	37	5	15.6	2.6	3.0	0.4
- Theft from Vehicle	747	689	-58	-7.8	10	21	11	110.0	1.3	3.0	1.7
- Theft of Motor Vehicle	396	415	19	4.8	18	14	-4	-22.2	4.5	3.4	-1.2
- Vehicle Interference	110	145	35	31.8	4	2	-2	-50.0	3.6	1.4	-2.3
- Theft	1421	1559	138	9.7	198	175	-23	-11.6	13.9	11.2	-2.7
- Theft from the Person	65	88	23	35.4	0	1	1	-	0.0	1.1	1.1
- Theft of Pedal Cycle	65	59	-6	-9.2	4	0	-4	-100.0	6.2	0.0	-6.2
- Shoplifting	444	455	11	2.5	117	117	0	0.0	26.4	25.7	-0.6
- Other Theft	847	957	110	13.0	77	57	-20	-26.0	9.1	6.0	-3.1
Criminal Damage inc. Arson	818	922	104	12.7	97	132	35	36.1	11.9	14.3	2.5
- Criminal Damage	790	900	110	13.9	97	128	31	32.0	12.3	14.2	1.9
- Arson	28	22	-6	-21.4	0	4	4	-	0.0	18.2	18.2
Racial/Religiously Aggravated Offences	86	81	-5	-5.8	16	11	-5	-31.3	18.6	13.6	-5.0
State Based Crime	Offences				Outcomes				Solved Rates %		
Crime Type	2015	2016	# diff.	% diff.	2015	2016	# diff.	% diff.	2015	2016	% pt. diff.
Drug Offences	170	211	41	24.1	151	198	47	31.1	88.8	93.8	5.0
- Trafficking of Drugs	21	39	18	85.7	13	34	21	161.5	61.9	87.2	25.3
- Possession of Drugs	149	172	23	15.4	138	164	26	18.8	92.6	95.3	2.7
Possession of Weapons	43	42	-1	-2.3	24	39	15	62.5	55.8	92.9	37.0
Public Order	338	453	115	34.0	90	98	8	8.9	26.6	21.6	-5.0
Miscellaneous Crimes against Society	101	98	-3	-3.0	36	34	-2	-5.6	35.6	34.7	-0.9

Corporate Services: Performance Summary
Essex Police Performance Summary

Harlow
Cumulative Year to August

Top Level	Offences				Outcomes				Solved Rates %		
Crime Type	2015	2016	# diff.	% diff.	2015	2016	# diff.	% diff.	2015	2016	% pt. diff.
Anti-Social Behaviour (incidents)	1745	1785	40	2.3	-	-	-	-	-	-	-
All Crime (excl. Action (NFIB) Fraud)	2956	2984	28	0.9	645	764	119	18.4	21.8	25.6	3.8
- State Based Crime	296	384	88	29.7	168	204	36	21.4	56.8	53.1	-3.6
- Victim Based Crime	2660	2600	-60	-2.3	477	560	83	17.4	17.9	21.5	3.6
Victim Based Crime	Offences				Outcomes				Solved Rates %		
Crime Type	2015	2016	# diff.	% diff.	2015	2016	# diff.	% diff.	2015	2016	% pt. diff.
Violence Against the Person	754	842	88	11.7	214	218	4	1.9	28.4	25.9	-2.5
- Homicide	1	1	0	0.0	0	0	0	-	0.0	0.0	0.0
- Violence with Injury	289	317	28	9.7	91	93	2	2.2	31.5	29.3	-2.2
- Violence without Injury	464	524	60	12.9	123	125	2	1.6	26.5	23.9	-2.7
Sexual Offences	83	86	3	3.6	10	12	2	20.0	12.0	14.0	1.9
- Rape	22	37	15	68.2	3	1	-2	-66.7	13.6	2.7	-10.9
- Rape - Under 16 yrs	4	9	5	125.0	1	0	-1	-100.0	25.0	0.0	-25.0
- Rape - Over 16 yrs	18	28	10	55.6	2	1	-1	-50.0	11.1	3.6	-7.5
- Other Sexual Offences	61	49	-12	-19.7	7	11	4	57.1	11.5	22.4	11.0
Robbery	26	18	-8	-30.8	5	1	-4	-80.0	19.2	5.6	-13.7
- Robbery of business property	0	0	0	-	0	0	0	-	-	-	-
- Robbery of Personal Property	26	18	-8	-30.8	5	1	-4	-80.0	19.2	5.6	-13.7
Theft Offences	1438	1225	-213	-14.8	200	240	40	20.0	13.9	19.6	5.7
- Burglary	237	230	-7	-3.0	12	14	2	16.7	5.1	6.1	1.0
- Dwelling Burglary	117	76	-41	-35.0	9	5	-4	-44.4	7.7	6.6	-1.1
- Other Burglary	120	154	34	28.3	3	9	6	200.0	2.5	5.8	3.3
- Vehicle Offences (incl. Interference)	446	256	-190	-42.6	6	8	2	33.3	1.3	3.1	1.8
- Theft from Vehicle	316	137	-179	-56.6	1	2	1	100.0	0.3	1.5	1.1
- Theft of Motor Vehicle	81	93	12	14.8	5	6	1	20.0	6.2	6.5	0.3
- Vehicle Interference	49	26	-23	-46.9	0	0	0	-	0.0	0.0	0.0
- Theft	755	739	-16	-2.1	182	218	36	19.8	24.1	29.5	5.4
- Theft from the Person	40	42	2	5.0	0	1	1	-	0.0	2.4	2.4
- Theft of Pedal Cycle	54	69	15	27.8	0	3	3	-	0.0	4.3	4.3
- Shoplifting	350	316	-34	-9.7	164	194	30	18.3	46.9	61.4	14.5
- Other Theft	311	312	1	0.3	18	20	2	11.1	5.8	6.4	0.6
Criminal Damage inc. Arson	359	429	70	19.5	48	89	41	85.4	13.4	20.7	7.4
- Criminal Damage	341	418	77	22.6	48	88	40	83.3	14.1	21.1	7.0
- Arson	18	11	-7	-38.9	0	1	1	-	0.0	9.1	9.1
Racial/Religiously Aggravated Offences	18	32	14	77.8	13	10	-3	-23.1	72.2	31.3	-41.0
State Based Crime	Offences				Outcomes				Solved Rates %		
Crime Type	2015	2016	# diff.	% diff.	2015	2016	# diff.	% diff.	2015	2016	% pt. diff.
Drug Offences	97	120	23	23.7	84	108	24	28.6	86.6	90.0	3.4
- Trafficking of Drugs	19	27	8	42.1	16	23	7	43.8	84.2	85.2	1.0
- Possession of Drugs	78	93	15	19.2	68	85	17	25.0	87.2	91.4	4.2
Possession of Weapons	22	29	7	31.8	11	23	12	109.1	50.0	79.3	29.3
Public Order	134	199	65	48.5	62	52	-10	-16.1	46.3	26.1	-20.1
Miscellaneous Crimes against Society	43	36	-7	-16.3	11	21	10	90.9	25.6	58.3	32.8

Corporate Services: Performance Summary
Essex Police Performance Summary

Harlow

Rolling 12 Months to August

Top Level	Offences				Outcomes				Solved Rates %		
Crime Type	2015	2016	# diff.	% diff.	2015	2016	# diff.	% diff.	2015	2016	% pt. diff.
Anti-Social Behaviour (incidents)	4133	3801	-332	-8.0	-	-	-	-	-	-	-
All Crime (excl. Action (NFIB) Fraud)	6913	7203	290	4.2	1839	1849	10	0.5	26.6	25.7	-0.9
- State Based Crime	659	869	210	31.9	424	456	32	7.5	64.3	52.5	-11.9
- Victim Based Crime	6254	6334	80	1.3	1415	1393	-22	-1.6	22.6	22.0	-0.6
Victim Based Crime	Offences				Outcomes				Solved Rates %		
Crime Type	2015	2016	# diff.	% diff.	2015	2016	# diff.	% diff.	2015	2016	% pt. diff.
Violence Against the Person	1633	1910	277	17.0	554	519	-35	-6.3	33.9	27.2	-6.8
- Homicide	1	4	3	300.0	0	2	2	-	0.0	50.0	50.0
- Violence with Injury	674	735	61	9.1	237	225	-12	-5.1	35.2	30.6	-4.6
- Violence without Injury	958	1171	213	22.2	317	292	-25	-7.9	33.1	24.9	-8.2
Sexual Offences	183	204	21	11.5	24	33	9	37.5	13.1	16.2	3.1
- Rape	57	74	17	29.8	8	4	-4	-50.0	14.0	5.4	-8.6
- Rape - Under 16 yrs	18	21	3	16.7	2	1	-1	-50.0	11.1	4.8	-6.3
- Rape - Over 16 yrs	39	53	14	35.9	6	3	-3	-50.0	15.4	5.7	-9.7
- Other Sexual Offences	126	130	4	3.2	16	29	13	81.3	12.7	22.3	9.6
Robbery	87	54	-33	-37.9	16	10	-6	-37.5	18.4	18.5	0.1
- Robbery of business property	7	3	-4	-57.1	0	1	1	-	0.0	33.3	33.3
- Robbery of Personal Property	80	51	-29	-36.3	16	9	-7	-43.8	20.0	17.6	-2.4
Theft Offences	3475	3221	-254	-7.3	688	657	-31	-4.5	19.8	20.4	0.6
- Burglary	654	629	-25	-3.8	78	30	-48	-61.5	11.9	4.8	-7.2
- Dwelling Burglary	290	270	-20	-6.9	59	16	-43	-72.9	20.3	5.9	-14.4
- Other Burglary	364	359	-5	-1.4	19	14	-5	-26.3	5.2	3.9	-1.3
- Vehicle Offences (incl. Interference)	946	706	-240	-25.4	26	43	17	65.4	2.7	6.1	3.3
- Theft from Vehicle	645	413	-232	-36.0	9	19	10	111.1	1.4	4.6	3.2
- Theft of Motor Vehicle	210	219	9	4.3	16	18	2	12.5	7.6	8.2	0.6
- Vehicle Interference	91	74	-17	-18.7	1	6	5	500.0	1.1	8.1	7.0
- Theft	1875	1886	11	0.6	584	584	0	0.0	31.1	31.0	-0.2
- Theft from the Person	86	124	38	44.2	1	5	4	400.0	1.2	4.0	2.9
- Theft of Pedal Cycle	118	159	41	34.7	5	7	2	40.0	4.2	4.4	0.2
- Shoplifting	981	908	-73	-7.4	513	509	-4	-0.8	52.3	56.1	3.8
- Other Theft	690	695	5	0.7	65	63	-2	-3.1	9.4	9.1	-0.4
Criminal Damage inc. Arson	876	945	69	7.9	133	174	41	30.8	15.2	18.4	3.2
- Criminal Damage	842	922	80	9.5	132	173	41	31.1	15.7	18.8	3.1
- Arson	34	23	-11	-32.4	1	1	0	0.0	2.9	4.3	1.4
Racial/Religiously Aggravated Offences	64	70	6	9.4	28	21	-7	-25.0	43.8	30.0	-13.8
State Based Crime	Offences				Outcomes				Solved Rates %		
Crime Type	2015	2016	# diff.	% diff.	2015	2016	# diff.	% diff.	2015	2016	% pt. diff.
Drug Offences	228	263	35	15.4	218	236	18	8.3	95.6	89.7	-5.9
- Trafficking of Drugs	34	49	15	44.1	35	39	4	11.4	102.9	79.6	-23.3
- Possession of Drugs	194	214	20	10.3	183	197	14	7.7	94.3	92.1	-2.3
Possession of Weapons	48	59	11	22.9	35	48	13	37.1	72.9	81.4	8.4
Public Order	286	464	178	62.2	138	133	-5	-3.6	48.3	28.7	-19.6
Miscellaneous Crimes against Society	97	83	-14	-14.4	33	39	6	18.2	34.0	47.0	13.0

Corporate Services: Performance Summary
Essex Police Performance Summary

Brentwood
Cumulative Year to August

Top Level	Offences				Outcomes				Solved Rates %		
Crime Type	2015	2016	# diff.	% diff.	2015	2016	# diff.	% diff.	2015	2016	% pt. diff.
Anti-Social Behaviour (incidents)	970	811	-159	-16.4	-	-	-	-	-	-	-
All Crime (excl. Action (NFIB) Fraud)	1624	1754	130	8.0	226	267	41	18.1	13.9	15.2	1.3
- State Based Crime	99	168	69	69.7	35	52	17	48.6	35.4	31.0	-4.4
- Victim Based Crime	1525	1586	61	4.0	191	215	24	12.6	12.5	13.6	1.0
Victim Based Crime	Offences				Outcomes				Solved Rates %		
Crime Type	2015	2016	# diff.	% diff.	2015	2016	# diff.	% diff.	2015	2016	% pt. diff.
Violence Against the Person	305	424	119	39.0	63	99	36	57.1	20.7	23.3	2.7
- Homicide	1	0	-1	-100.0	0	0	0	-	0.0	-	-
- Violence with Injury	124	163	39	31.5	26	43	17	65.4	21.0	26.4	5.4
- Violence without Injury	180	261	81	45.0	37	56	19	51.4	20.6	21.5	0.9
Sexual Offences	29	33	4	13.8	1	1	0	0.0	3.4	3.0	-0.4
- Rape	7	16	9	128.6	1	0	-1	-100.0	14.3	0.0	-14.3
- Rape - Under 16 yrs	1	5	4	400.0	0	0	0	-	0.0	0.0	0.0
- Rape - Over 16 yrs	6	11	5	83.3	1	0	-1	-100.0	16.7	0.0	-16.7
- Other Sexual Offences	22	17	-5	-22.7	0	1	1	-	0.0	5.9	5.9
Robbery	12	18	6	50.0	2	3	1	50.0	16.7	16.7	0.0
- Robbery of business property	3	4	1	33.3	2	1	-1	-50.0	66.7	25.0	-41.7
- Robbery of Personal Property	9	14	5	55.6	0	2	2	-	0.0	14.3	14.3
Theft Offences	968	891	-77	-8.0	107	84	-23	-21.5	11.1	9.4	-1.6
- Burglary	243	286	43	17.7	50	18	-32	-64.0	20.6	6.3	-14.3
- Dwelling Burglary	157	167	10	6.4	41	11	-30	-73.2	26.1	6.6	-19.5
- Other Burglary	86	119	33	38.4	9	7	-2	-22.2	10.5	5.9	-4.6
- Vehicle Offences (incl. Interference)	339	236	-103	-30.4	10	2	-8	-80.0	2.9	0.8	-2.1
- Theft from Vehicle	218	117	-101	-46.3	5	1	-4	-80.0	2.3	0.9	-1.4
- Theft of Motor Vehicle	77	93	16	20.8	0	0	0	-	0.0	0.0	0.0
- Vehicle Interference	44	26	-18	-40.9	5	1	-4	-80.0	11.4	3.8	-7.5
- Theft	386	369	-17	-4.4	47	64	17	36.2	12.2	17.3	5.2
- Theft from the Person	25	22	-3	-12.0	0	1	1	-	0.0	4.5	4.5
- Theft of Pedal Cycle	30	30	0	0.0	1	2	1	100.0	3.3	6.7	3.3
- Shoplifting	100	91	-9	-9.0	34	38	4	11.8	34.0	41.8	7.8
- Other Theft	231	226	-5	-2.2	12	23	11	91.7	5.2	10.2	5.0
Criminal Damage inc. Arson	211	220	9	4.3	18	28	10	55.6	8.5	12.7	4.2
- Criminal Damage	201	217	16	8.0	18	28	10	55.6	9.0	12.9	3.9
- Arson	10	3	-7	-70.0	0	0	0	-	0.0	0.0	0.0
Racial/Religiously Aggravated Offences	10	21	11	110.0	3	3	0	0.0	30.0	14.3	-15.7
State Based Crime	Offences				Outcomes				Solved Rates %		
Crime Type	2015	2016	# diff.	% diff.	2015	2016	# diff.	% diff.	2015	2016	% pt. diff.
Drug Offences	17	21	4	23.5	16	19	3	18.8	94.1	90.5	-3.6
- Trafficking of Drugs	6	4	-2	-33.3	4	3	-1	-25.0	66.7	75.0	8.3
- Possession of Drugs	11	17	6	54.5	12	16	4	33.3	109.1	94.1	-15.0
Possession of Weapons	6	6	0	0.0	4	7	3	75.0	66.7	116.7	50.0
Public Order	60	112	52	86.7	13	20	7	53.8	21.7	17.9	-3.8
Miscellaneous Crimes against Society	16	29	13	81.3	2	6	4	200.0	12.5	20.7	8.2

Corporate Services: Performance Summary
Essex Police Performance Summary

Brentwood
Rolling 12 Months to August

Top Level	Offences				Outcomes				Solved Rates %		
Crime Type	2015	2016	# diff.	% diff.	2015	2016	# diff.	% diff.	2015	2016	% pt. diff.
Anti-Social Behaviour (incidents)	2044	1846	-198	-9.7	-	-	-	-	-	-	-
All Crime (excl. Action (NFIB) Fraud)	3671	3949	278	7.6	624	611	-13	-2.1	17.0	15.5	-1.5
- State Based Crime	230	316	86	37.4	131	114	-17	-13.0	57.0	36.1	-20.9
- Victim Based Crime	3441	3633	192	5.6	493	497	4	0.8	14.3	13.7	-0.6
Victim Based Crime	Offences				Outcomes				Solved Rates %		
Crime Type	2015	2016	# diff.	% diff.	2015	2016	# diff.	% diff.	2015	2016	% pt. diff.
Violence Against the Person	709	861	152	21.4	185	206	21	11.4	26.1	23.9	-2.2
- Homicide	2	0	-2	-100.0	1	0	-1	-100.0	50.0	-	-
- Violence with Injury	287	354	67	23.3	78	98	20	25.6	27.2	27.7	0.5
- Violence without Injury	420	507	87	20.7	106	108	2	1.9	25.2	21.3	-3.9
Sexual Offences	65	76	11	16.9	4	3	-1	-25.0	6.2	3.9	-2.2
- Rape	17	32	15	88.2	1	0	-1	-100.0	5.9	0.0	-5.9
- Rape - Under 16 yrs	4	10	6	150.0	0	0	0	-	0.0	0.0	0.0
- Rape - Over 16 yrs	13	22	9	69.2	1	0	-1	-100.0	7.7	0.0	-7.7
- Other Sexual Offences	48	44	-4	-8.3	3	3	0	0.0	6.3	6.8	0.6
Robbery	24	36	12	50.0	7	9	2	28.6	29.2	25.0	-4.2
- Robbery of business property	5	5	0	0.0	3	1	-2	-66.7	60.0	20.0	-40.0
- Robbery of Personal Property	19	31	12	63.2	4	8	4	100.0	21.1	25.8	4.8
Theft Offences	2206	2124	-82	-3.7	243	223	-20	-8.2	11.0	10.5	-0.5
- Burglary	640	679	39	6.1	81	36	-45	-55.6	12.7	5.3	-7.4
- Dwelling Burglary	447	411	-36	-8.1	65	25	-40	-61.5	14.5	6.1	-8.5
- Other Burglary	193	268	75	38.9	16	11	-5	-31.3	8.3	4.1	-4.2
- Vehicle Offences (incl. Interference)	748	620	-128	-17.1	27	21	-6	-22.2	3.6	3.4	-0.2
- Theft from Vehicle	476	317	-159	-33.4	9	10	1	11.1	1.9	3.2	1.3
- Theft of Motor Vehicle	188	246	58	30.9	13	6	-7	-53.8	6.9	2.4	-4.5
- Vehicle Interference	84	57	-27	-32.1	5	5	0	0.0	6.0	8.8	2.8
- Theft	818	825	7	0.9	135	166	31	23.0	16.5	20.1	3.6
- Theft from the Person	45	68	23	51.1	1	1	0	0.0	2.2	1.5	-0.8
- Theft of Pedal Cycle	53	45	-8	-15.1	2	3	1	50.0	3.8	6.7	2.9
- Shoplifting	209	224	15	7.2	82	113	31	37.8	39.2	50.4	11.2
- Other Theft	511	488	-23	-4.5	50	49	-1	-2.0	9.8	10.0	0.3
Criminal Damage inc. Arson	437	536	99	22.7	54	56	2	3.7	12.4	10.4	-1.9
- Criminal Damage	422	529	107	25.4	53	56	3	5.7	12.6	10.6	-2.0
- Arson	15	7	-8	-53.3	1	0	-1	-100.0	6.7	0.0	-6.7
Racial/Religiously Aggravated Offences	21	28	7	33.3	6	4	-2	-33.3	28.6	14.3	-14.3
State Based Crime	Offences				Outcomes				Solved Rates %		
Crime Type	2015	2016	# diff.	% diff.	2015	2016	# diff.	% diff.	2015	2016	% pt. diff.
Drug Offences	70	44	-26	-37.1	66	41	-25	-37.9	94.3	93.2	-1.1
- Trafficking of Drugs	12	9	-3	-25.0	7	8	1	14.3	58.3	88.9	30.6
- Possession of Drugs	58	35	-23	-39.7	59	33	-26	-44.1	101.7	94.3	-7.4
Possession of Weapons	15	18	3	20.0	12	16	4	33.3	80.0	88.9	8.9
Public Order	112	199	87	77.7	40	44	4	10.0	35.7	22.1	-13.6
Miscellaneous Crimes against Society	33	55	22	66.7	13	13	0	0.0	39.4	23.6	-15.8

Questions and Answers, Parish Clerks Forum, 5 July 2016

The following questions and answers were raised at the meeting of the Parish Clerks Forum on 5 July 2016. Inspector Andy Sawyer from Essex Police was in attendance.

1. A lack of police presence in Great Totham – the Local Policing Teams provide 24/7 emergency response cover to the county of Essex. They and supporting departments such as the Dog Section, Roads Policing and Armed Policing are nearly all in marked vehicles and wearing uniform. In the course of their duties they will transit through any area en route to incidents requiring an emergency response. The Community Policing Team are capable of providing a ‘police presence’ as part of a pre-planned deployment resulting from a specific problem identified as carrying a significant amount of potential harm or risk to the community. As mentioned yesterday, resources are finite and we, with partners would look to identify the cream of the crop to focus our attention on.
2. **FAO Casualty Reduction Section:** Speeding on the B1022 at Totham North – Essex Police have a Casualty Reduction Section (currently based at South Woodham Ferrers), who look at specific road related issues – again focussing on areas or individual roads where casualty figures are high or the nature of the nuisance caused is such that the wider community is overwhelmingly affected. I’ve copied this to the Casualty Reduction Section although for future reference you can email them direct with your concerns:

‘speeding.complaints@essex.pnn.police.uk’
3. Inconsiderate parking, adding danger to the junction, at the B1022 end of Hall Road – if vehicles are on yellow lines etc, this falls to the local authority.
4. Escalating rural crime and lack of resources and strategy to combat it (please find attached an email from Cllr H Bass looking for answers) – answered separately via email to Cllr Bass (by the District Commander). My presentation hopefully covered the fact that there is a strategy, it is under review by the Deputy Chief Constable, there is a Rural Crime Forum (run by the OPCC and next meeting on 13 Jul 16), we do have a Special Constabulary Rural Crime Team (directed by the force rural and wildlife officer) and I will be identifying and appointing a Rural Crime Single Point of Contact from within the CPT.
5. When the police dispatch a recovery company to remove damaged cars after an accident could they ensure that all the debris is removed – this is the responsibility of the recovery agent and ECC Highways should be contacted with similar concerns.
6. Is there an equivalent to the weekly crime reports that used to be posted to <http://maldondistrictnhw.co.uk/> (which haven’t been updated since March)? - With the considerable reduction in staff numbers, we no longer have the capacity to generate such reports. There is work underway with NHW Coordinators, seeking to better engage with them and exploit (in a nice way!) their considerable talent and existing network, to get relevant news out to the community. Detailed information about local crimes are now available at:

http://www.ukcrimestats.com/Police_Force/Essex_Police

<https://www.police.uk/>

7. How does Essex Police propose to communicate crime awareness now that the local pages have been removed from Essex Police's website? The Essex Community Messaging web site doesn't have the same sort of content – hopefully covered in my presentation yesterday. ECM is being overhauled, District based information only (making it more relevant) and an ability to attach documents and links. The website still has the details of the Local Community Meetings which CPT members attend on a monthly basis if members of the public have a query they wish to make face to face.
8. Does Wickham Bishops have a neighbourhood police officer? It has been many months since the last communication from PCSO Hayden and PC Keene – No individual parish or wider area has their own PCSO or Neighbourhood Officer specifically tasked with that geographical area. The CPT resource level simply doesn't make this workable. As per the presentation, if Wickham Bishops has an issue, whether that be a problem individual, or a location that needs police attention because the threat, risk and/or harm levels to the community have been identified as high, you would receive a proportionate response from the wider team. Concerns could be passed to us using the generic email address on the website.
9. *N. Fambridge Parish Council asked how the Police would cope with call outs on the Dengie when they are based at Chelmsford and what is their response time?*

Inspector Sawyer commented that there would be a Maldon base and that this was currently being negotiated but at present was commercially sensitive.