

STRATEGIC CHANGE MANAGEMENT DEPARTMENT

Maldon Performance Summary

August 2014





Strategic Change Management Department: Performance Summary

District Data: August 2014

1. Introduction

This performance summary is designed to inform individual districts if, cumulatively, they are performing better or worse than the same period last year. It is expected that this data, where required, will be shared with the Community Safety Partnerships, as well as acting as an aid to officers attending local engagement meetings.

The data includes:

- Cumulative offences this year vs. last year
- Cumulative solved rates this year vs. last year
- Charts to show the offences and solved rates of each crime type¹.

2. Current Position

- Maldon has an all crime offence increase of 17.4% (147 offences) April to August 2014 when compared to the same period last year.
- With an all crime solved rate of 19.15%, Maldon is 3.9% points worse than the same period last year (April to August).
- Maldon has had a 17.0% reduction in ASB (106 incidents) compared with last year (April to August)

2.1 Offences

Areas of improvement include:

Domestic Burglary 26.5% (9 offences) better

Areas identified for improvement include:

Theft from Vehicles 41.3% (38 offences) worse

Robbery 200.00% (4 offences) worse

Other Violence Against the Person 38.5% (67 offences) worse

2.2 Solved Rates

Areas of improvement include:

Domestic Burglary 56.00%

Serious Sexual Crime 63.64%

Areas identified for improvement include:

Other Burglary 0.98%

Other Theft & Handling 6.90%

¹ The charts on pages 4 to 9 show the number of offences each period, in each District for the specified crime type, with the % difference year on year labelled. The solved rate charts show the cumulative solved rates for each year, with the % point difference between the two periods labelled.



Strategic Change Management Department: Performance Summary

District Data: August 2014

3. Performance Summary

3.1 Maldon Performance Summary

Offences	Last Year Cumulative	This Year Cumulative	Year on Year # Difference	Year on Year % Difference	Last Year Rolling 12M	This Year Rolling 12 M	Rolling 12M # Difference	Rolling 12M % Difference
All Crime	845	992	147	17.4	2118	2228	110	5.2
Domestic Burglary incl. Attempts	34	25	-9	-26.5	87	81	-6	-6.9
Other Burglary incl. Attempts	72	102	30	41.7	194	211	17	8.8
Vehicle Crime excl.Inter'ce	124	173	49	39.5	359	345	-14	-3.9
Theft from Vehicles	92	130	38	41.3	259	248	-11	-4.2
Other Theft & Handling	154	145	-9	-5.8	375	346	-29	-7.7
Shoplifting	37	45	8	21.6	105	108	3	2.9
Criminal Damage	136	137	1	0.7	309	349	40	12.9
Robbery	2	6	4	200.0	7	16	9	128.6
Serious Violent Crime	7	5	-2	-28.6	18	19	1	5.6
Serious Sexual Crime	8	11	3	37.5	14	25	11	78.6
Assault with Less Serious Injury	83	92	9	10.8	185	181	-4	-2.2
Other Violence Against the Person	174	241	67	38.5	425	498	73	17.2
Racially-Aggravated Crime	0	3	3	#DIV/0!	6	14	8	133.3
Anti-Social Behaviour	622	516	-106	-17.0	1308	1103	-205	-15.7

Outcomes	Last Year Cumulative	This Year Cumulative	Year on Year # Difference	Year on Year % Difference	Last Year Rolling 12M	This Year Rolling 12 M	Rolling 12M # Difference	Rolling 12M % Difference
All Crime	195	190	-5	-2.6	478	472	-6	-1.3
Domestic Burglary incl. Attempts	10	14	4	40.0	15	19	4	26.7
Other Burglary incl. Attempts	4	1	-3	-75.0	6	3	-3	-50.0
Vehicle Crime excl.Inter'ce	3	6	3	100.0	11	27	16	145.5
Theft from Vehicles	1	3	2	200.0	3	22	19	633.3
Other Theft & Handling	15	10	-5	-33.3	44	31	-13	-29.5
Shoplifting	18	16	-2	-11.1	66	55	-11	-16.7
Criminal Damage	21	14	-7	-33.3	55	40	-15	-27.3
Robbery	1	1	0	0.0	6	2	-4	-66.7
Serious Violent Crime	4	4	0	0.0	11	7	-4	-36.4
Serious Sexual Crime	2	7	5	250.0	3	8	5	166.7
Assault with Less Serious Injury	35	34	-1	-2.9	75	73	-2	-2.7
Other Violence Against the Person	81	89	8	9.9	174	203	29	16.7
Racially-Aggravated Crime	1	1	0	0.0	1	6	5	500.0

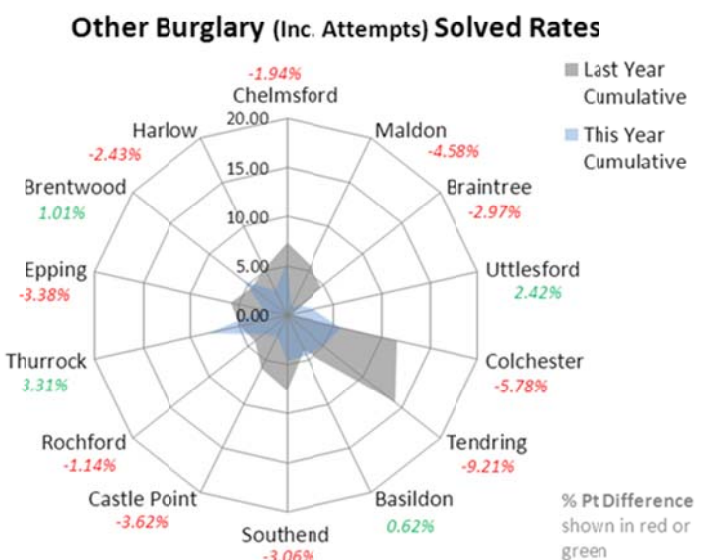
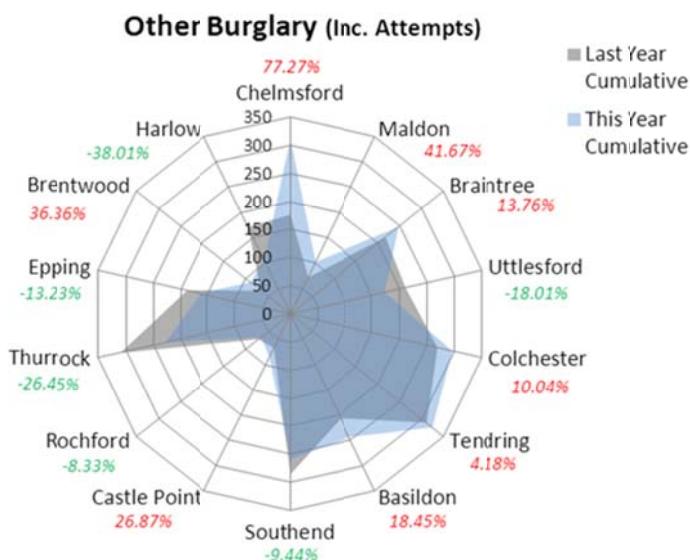
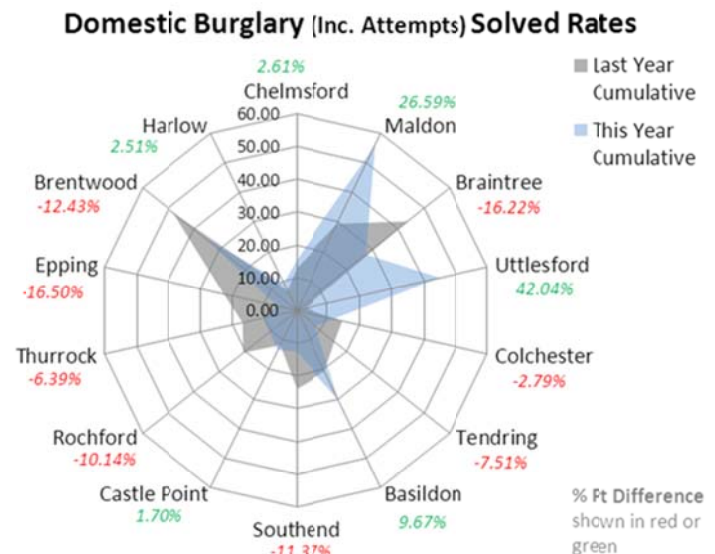
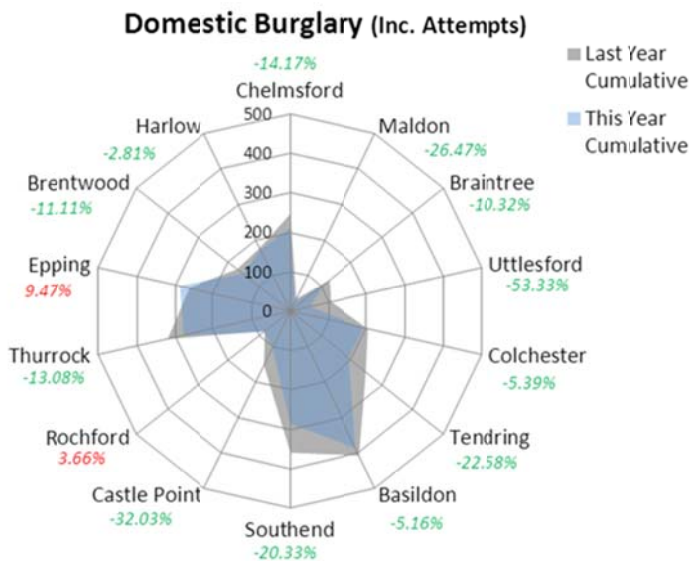
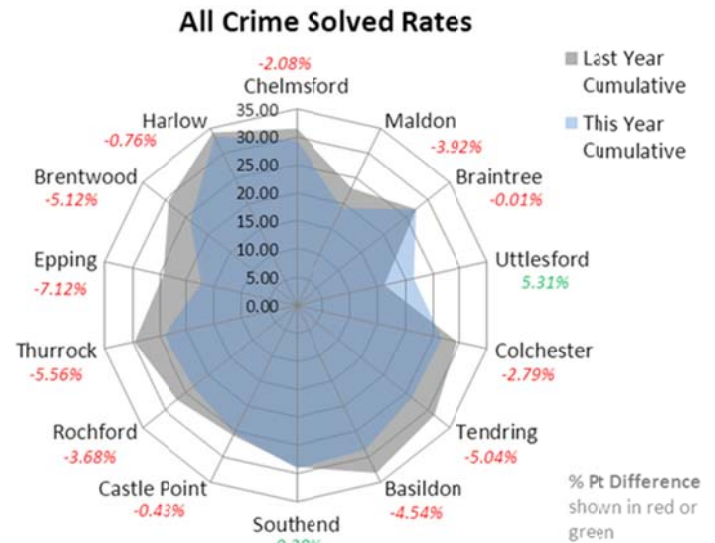
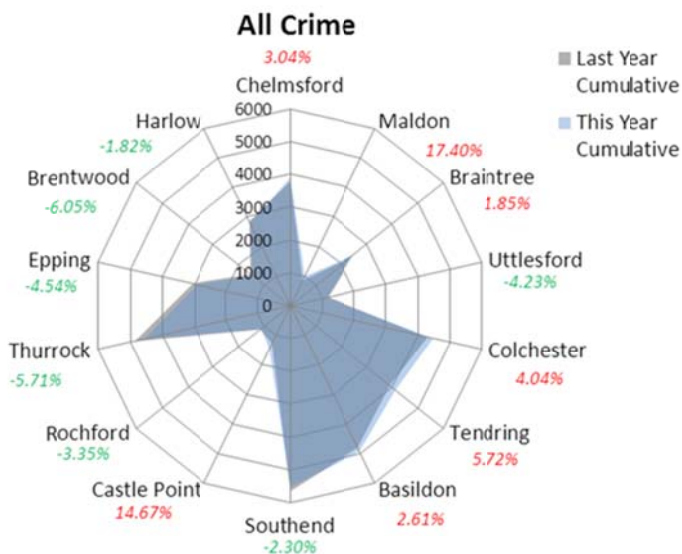
Solved Rates %	Last Year Cumulative	This Year Cumulative	Year on Year % Point Difference	Last Year Rolling 12M	This Year Rolling 12 M	-	Rolling 12M % Point Difference
All Crime	23.08	19.15	-3.9	22.57	21.18		-1.4
Domestic Burglary incl. Attempts	29.41	56.00	26.6	17.24	23.46		6.2
Other Burglary incl. Attempts	5.56	0.98	-4.6	3.09	1.42		-1.7
Vehicle Crime excl.Inter'ce	2.42	3.47	1.0	3.06	7.83		4.8
Theft from Vehicles	1.09	2.31	1.2	1.16	8.87		7.7
Other Theft & Handling	9.74	6.90	-2.8	11.73	8.96		-2.8
Shoplifting	48.65	35.56	-13.1	62.86	50.93		-11.9
Criminal Damage	15.44	10.22	-5.2	17.80	11.46		-6.3
Robbery	50.00	16.67	-33.3	85.71	12.50		-73.2
Serious Violent Crime	57.14	80.00	22.9	61.11	36.84		-24.3
Serious Sexual Crime	25.00	63.64	38.6	21.43	32.00		10.6
Assault with Less Serious Injury	42.17	36.96	-5.2	40.54	40.33		-0.2
Other Violence Against the Person	46.55	36.93	-9.6	40.94	40.76		-0.2
Racially-Aggravated Crime	#DIV/0!	33.33	#DIV/0!	16.67	42.86		26.2



Strategic Change Management Department: Performance Summary

District Data: August 2014

3.2 Crime Types

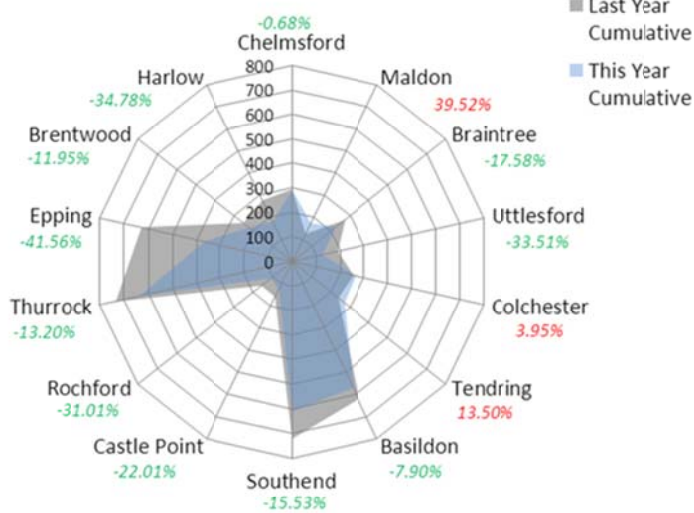




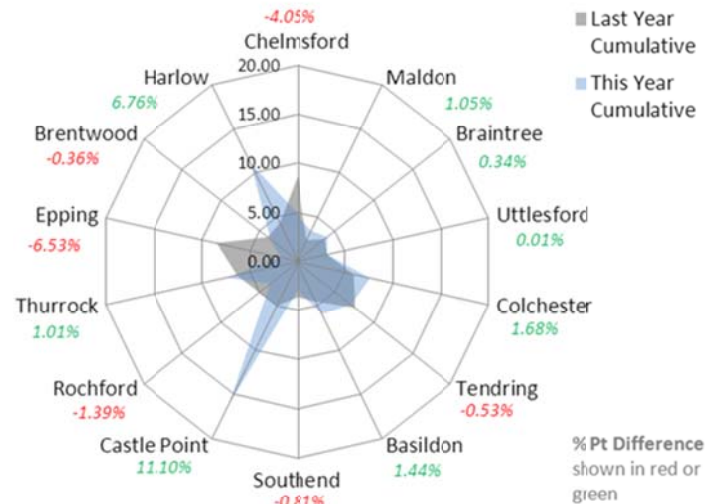
Strategic Change Management Department: Performance Summary

District Data: August 2014

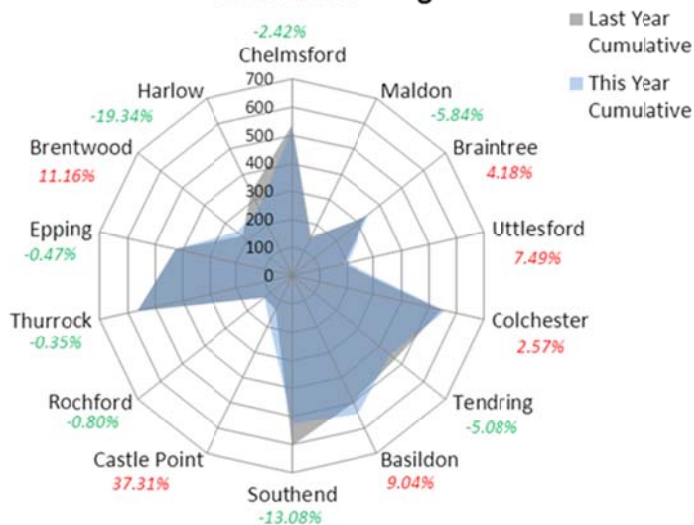
Vehicle Crime (Excl. Interference)



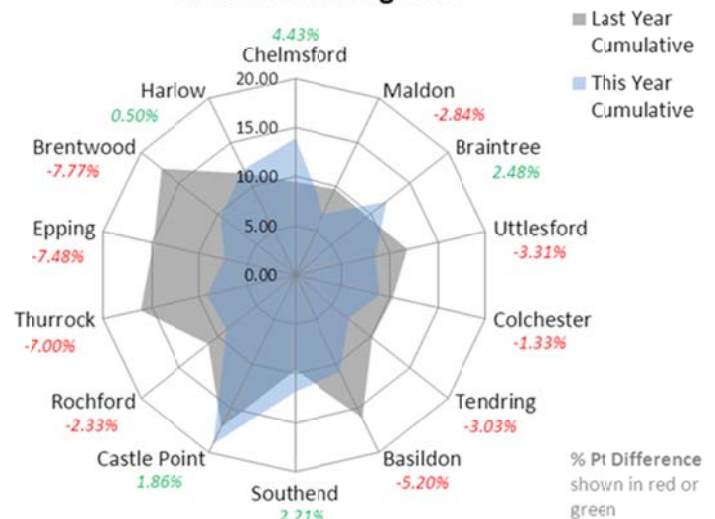
Vehicle Crime (Excl. Interference) Solved rates



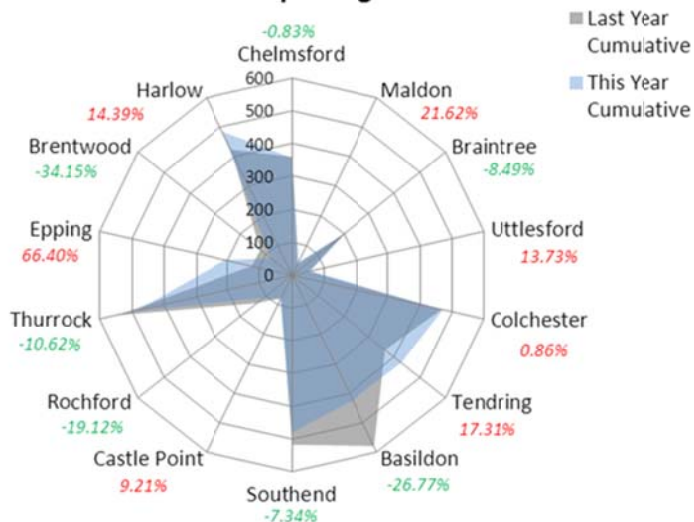
Other Theft & Handling



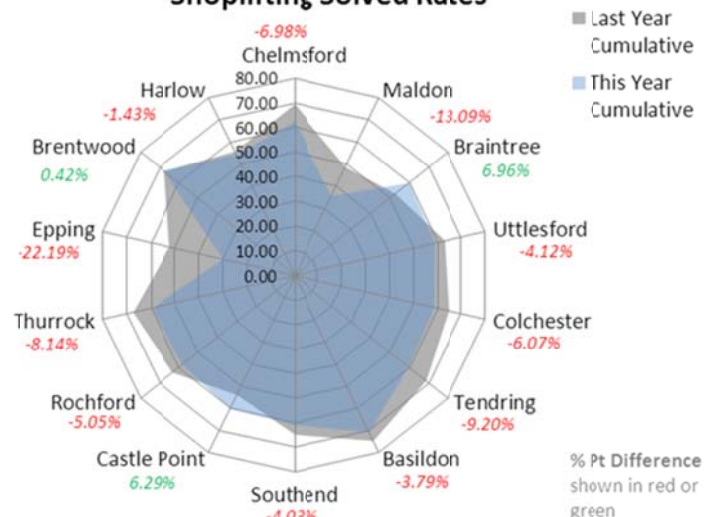
Other Theft & Handling Solved Rates



Shoplifting



Shoplifting Solved Rates

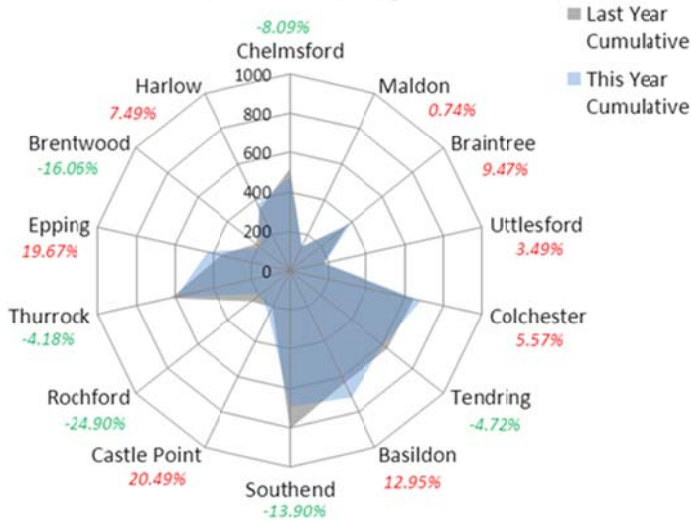




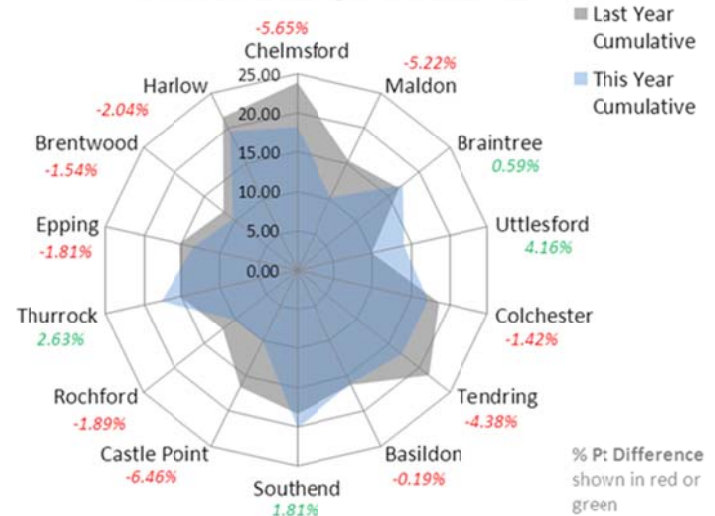
Strategic Change Management Department: Performance Summary

District Data: August 2014

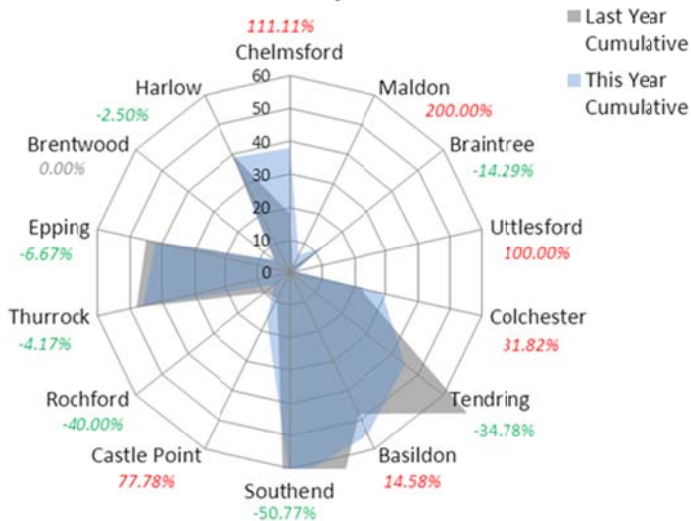
Criminal Damage



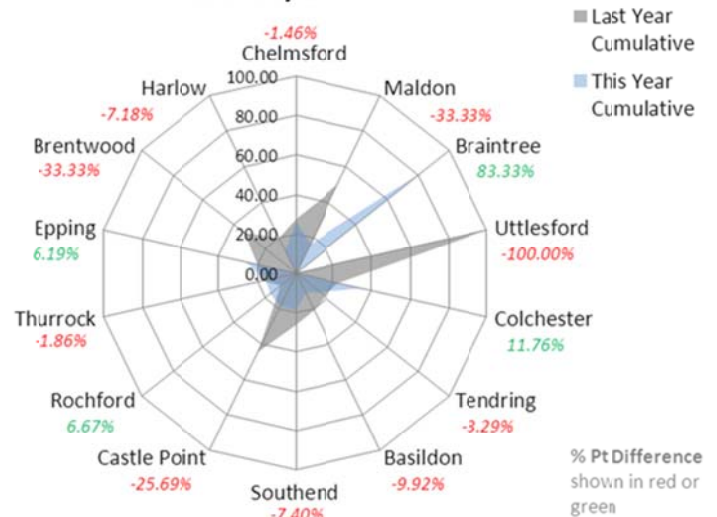
Criminal Damage Solved Rates



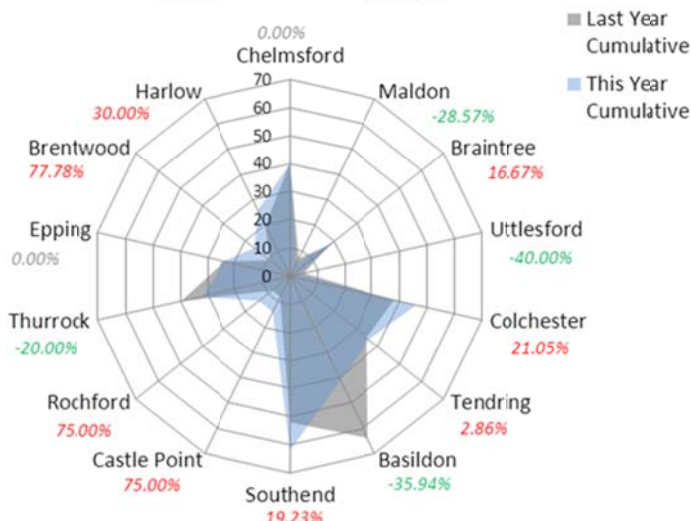
Robbery



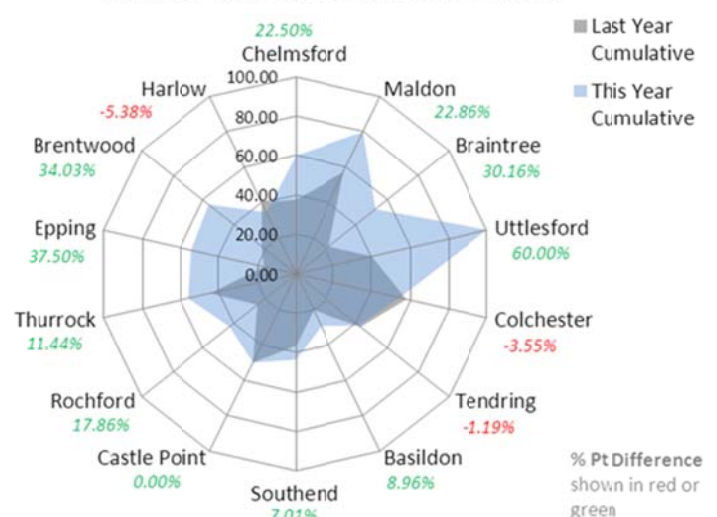
Robbery Solved Rates



Serious Violent Crime



Serious Violent Crime Solved Rates

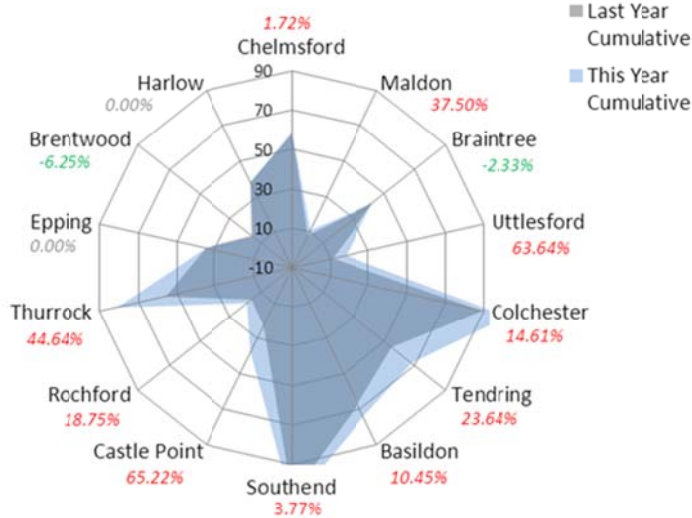




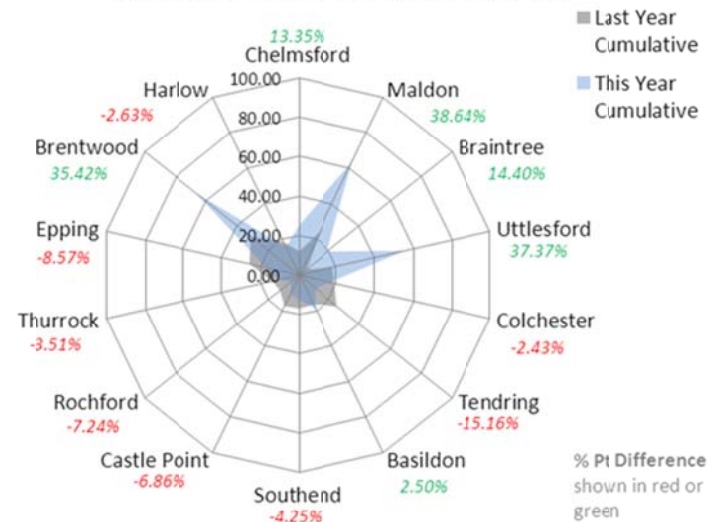
Strategic Change Management Department: Performance Summary

District Data: August 2014

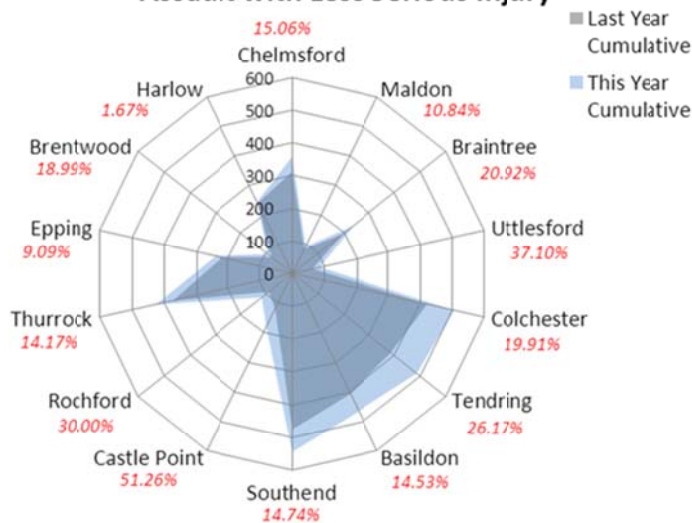
Serious Sexual Crime



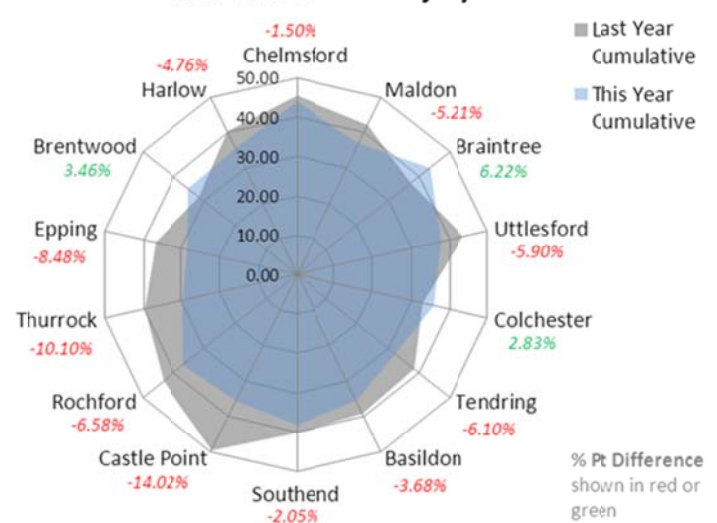
Serious Sexual Crime Solved Rates



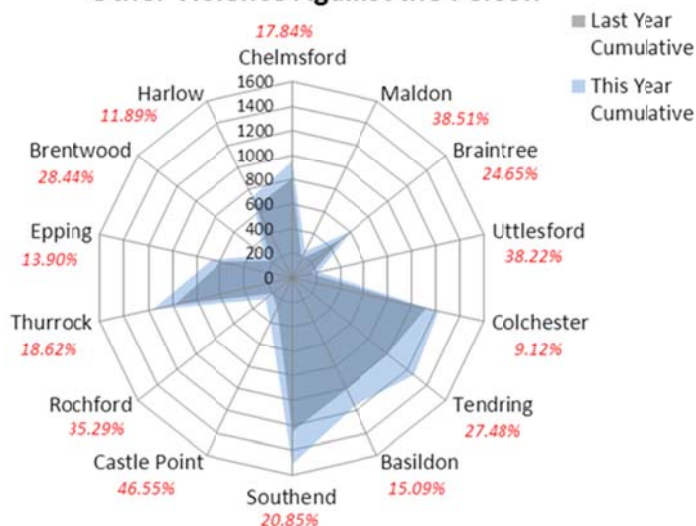
Assault with Less Serious Injury



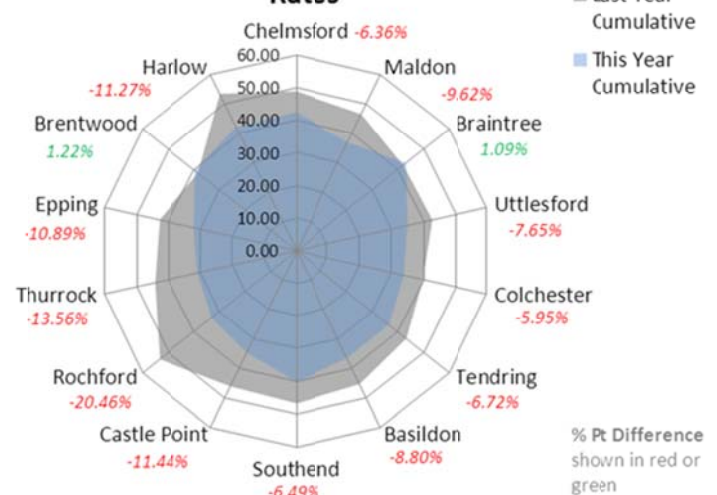
Assault with Less Serious Injury Solved Rates



Other Violence Against the Person



Other Violence Against the Person Solved Rates

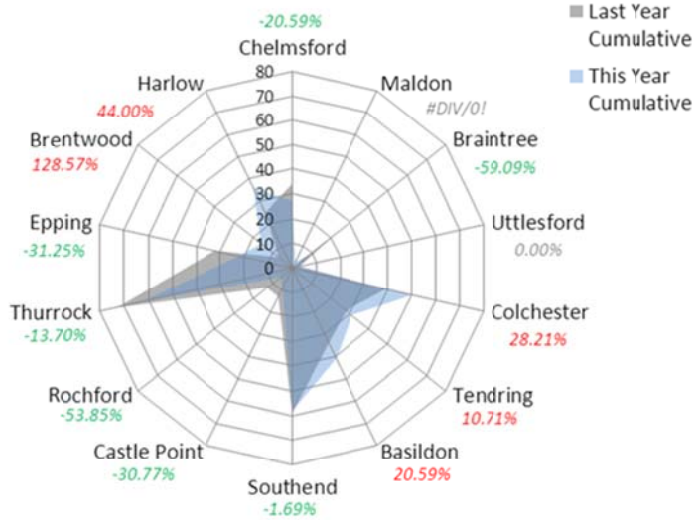




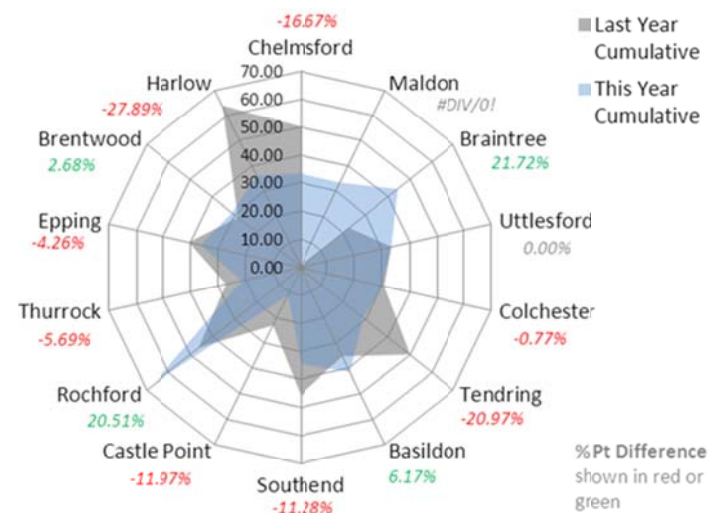
Strategic Change Management Department: Performance Summary

District Data: August 2014

Racially Aggravated Crime



Racially Aggravated Crime Solved Rates



%Pt Difference shown in red or green

Anti Social Behaviour

